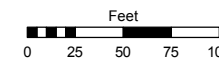


Assessor's Map Number

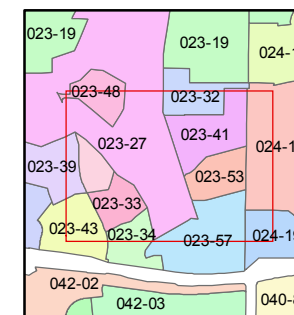
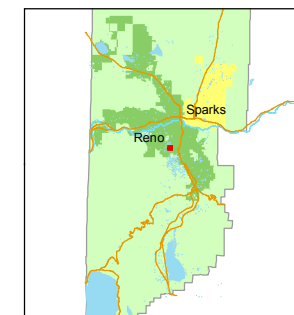
**023-53**

STATE OF NEVADA  
**WASHOE COUNTY**  
ASSESSOR'S OFFICE  
Michael E. Clark, Assessor

1001 East Ninth Street  
Building D  
Reno, Nevada 89512  
(775) 328-2231



1 inch = 100 feet



created by: TWT 6/3/2015

last updated: \_\_\_\_\_

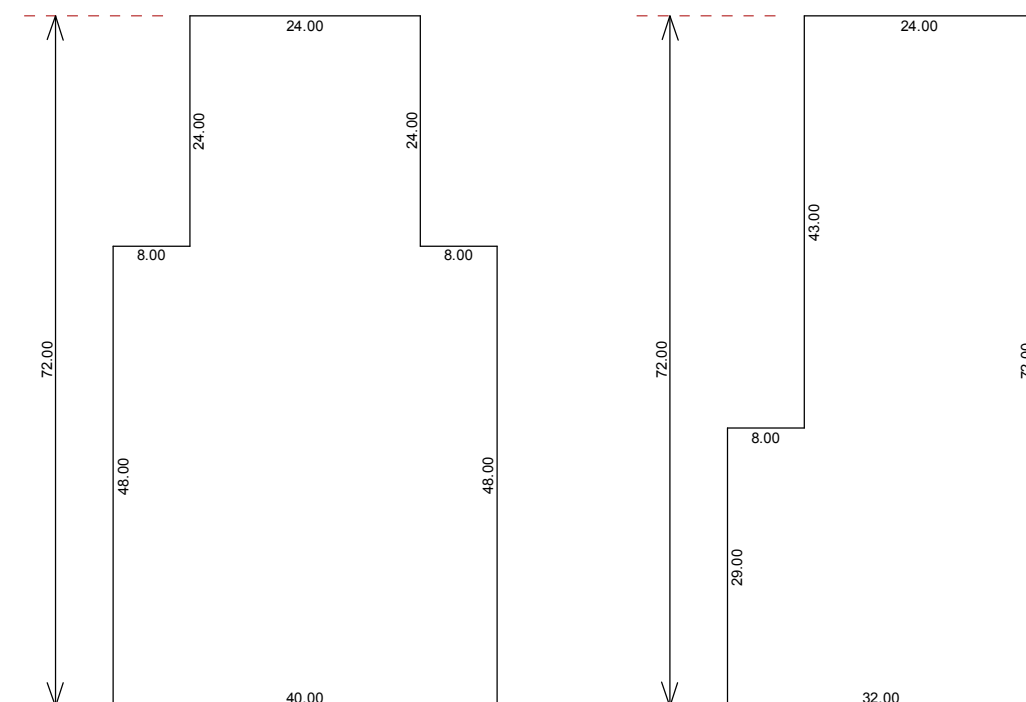
area previously shown on map(s)  
\_\_\_\_\_

NOTE: This map was prepared for the use of the Washoe County Assessor for assessment and illustrative purposes only. It does not represent a survey of the premises. No liability is assumed as to the sufficiency or accuracy of the data delineated hereon.

# (#1645) VILLAS AT LAKERIDGE UNIT THREE

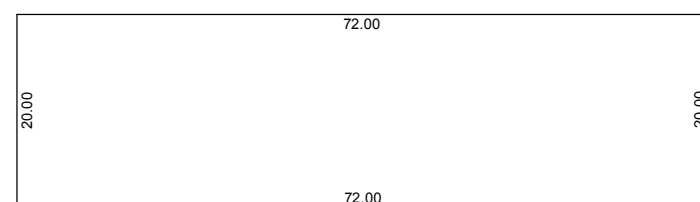
A CONDOMINIUM

PORTION OF THE SE 1/4 OF SECTION 26  
T19N - R19E



UNIT "A"

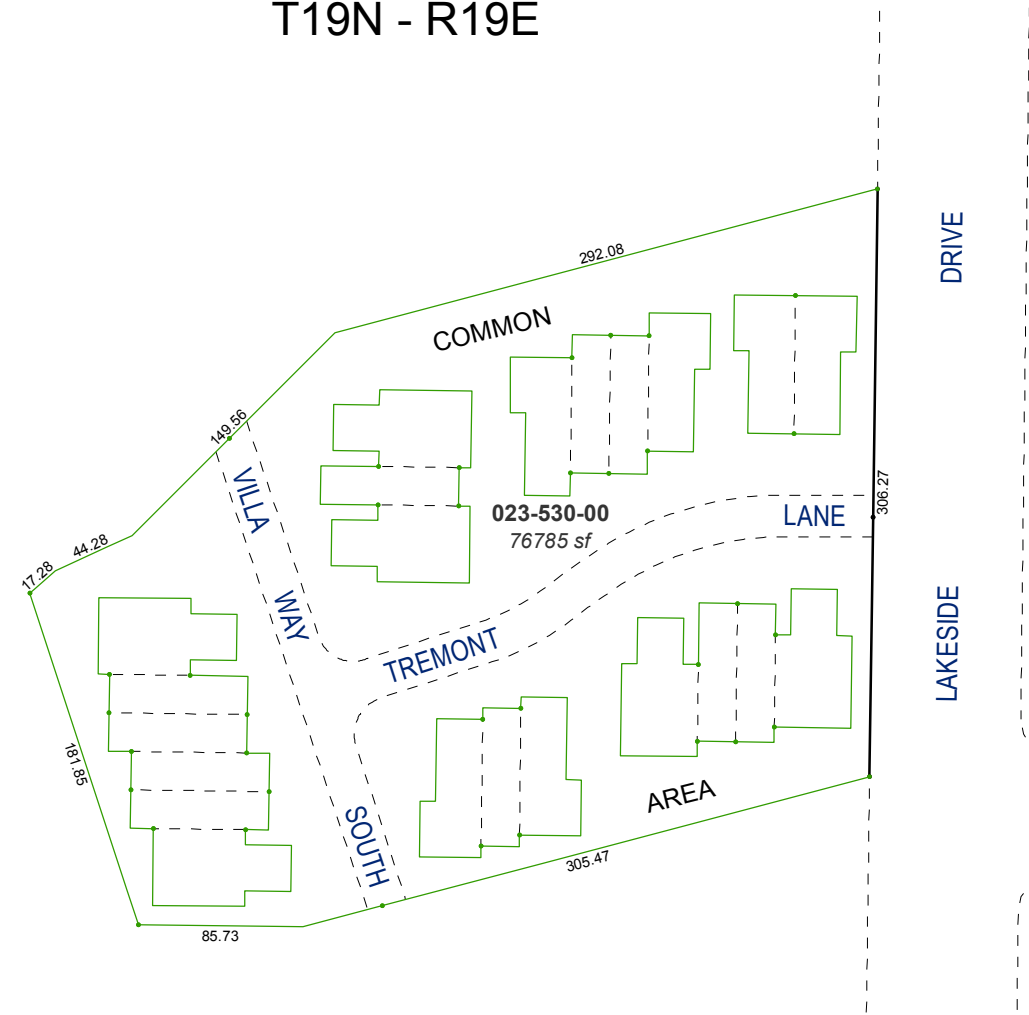
UNIT "D"



UNIT "B"

TYPICAL UNITS

SCALE 1" = 20'



UNDIVIDED 1/22 INTEREST IN COMMON AREA