

# (#1692) LAKERIDGE TERRACE WEST UNIT 4

A PLANNED UNIT DEVELOPMENT

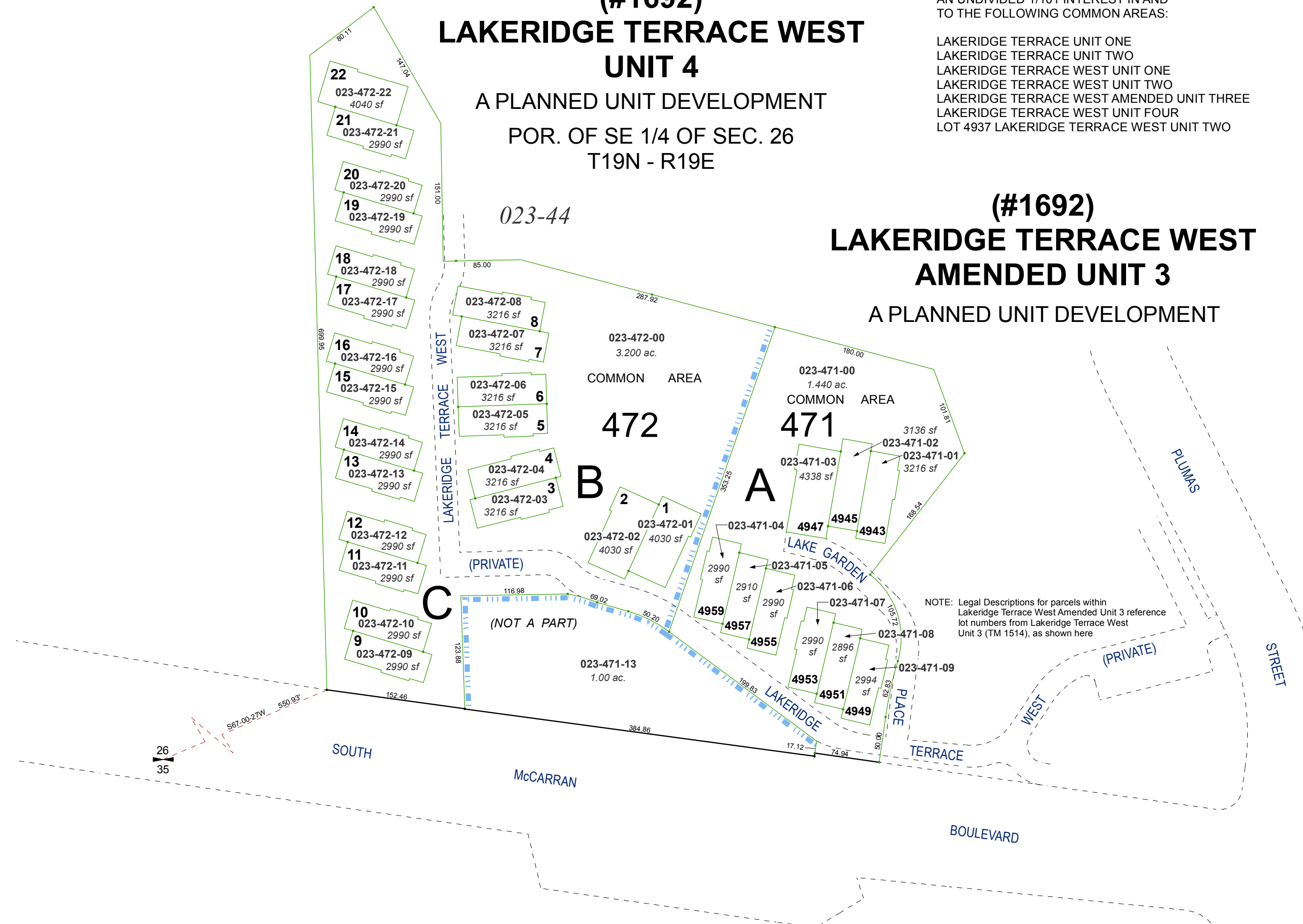
POR. OF SE 1/4 OF SEC. 26  
T19N - R19E

AN UNDIVIDED 1/101 INTEREST IN AND  
TO THE FOLLOWING COMMON AREAS:

LAKERIDGE TERRACE UNIT ONE  
LAKERIDGE TERRACE UNIT TWO  
LAKERIDGE TERRACE WEST UNIT ONE  
LAKERIDGE TERRACE WEST UNIT TWO  
LAKERIDGE TERRACE WEST AMENDED UNIT THREE  
LAKERIDGE TERRACE WEST UNIT FOUR  
LOT 4937 LAKERIDGE TERRACE WEST UNIT TWO

# (#1692) LAKERIDGE TERRACE WEST AMENDED UNIT 3

A PLANNED UNIT DEVELOPMENT



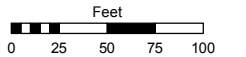
NOTE: Legal Descriptions for parcels within Lakeridge Terrace West Amended Unit 3 reference lot numbers from Lakeridge Terrace West Unit 3 (TM 1514), as shown here

Assessor's Map Number

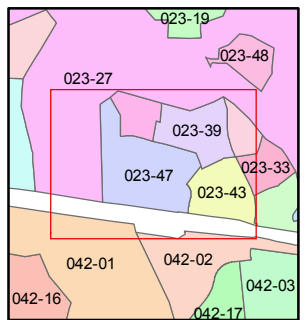
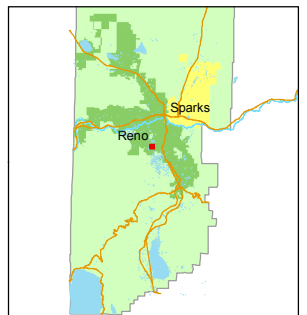
**023-47**

STATE OF NEVADA  
**WASHOE COUNTY**  
ASSESSOR'S OFFICE  
Michael E. Clark, Assessor

1001 East Ninth Street  
Building D  
Reno, Nevada 89512  
(775) 328-2231



1 inch = 100 feet



created by: TWT 6/2/2015

last updated:

area previously shown on map(s)

NOTE: This map was prepared for the use of the Washoe County Assessor for assessment and illustrative purposes only. It does not represent a survey of the premises. No liability is assumed as to the sufficiency or accuracy of the data delineated hereon.