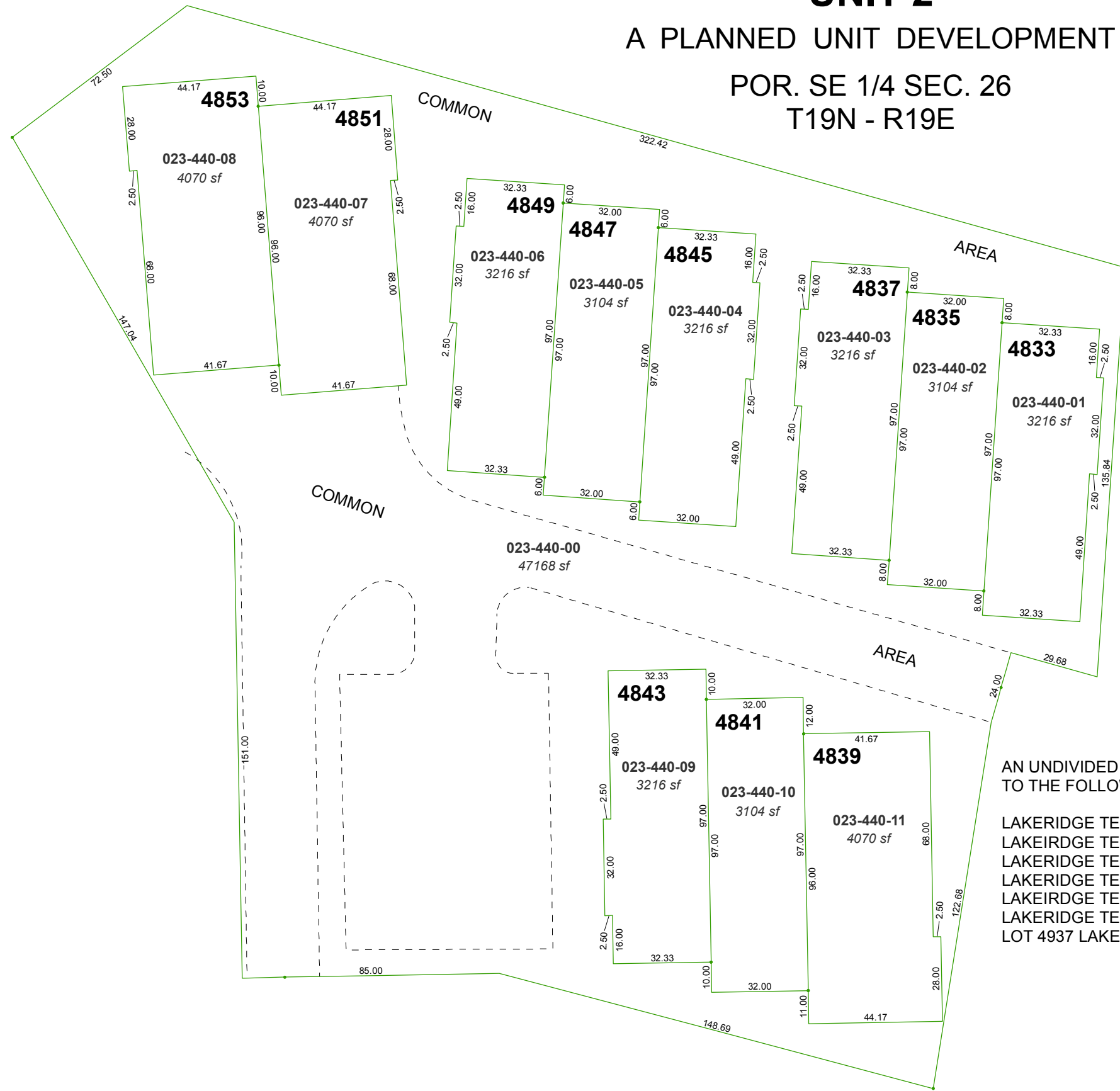


(#1439) LAKERIDGE TERRACE WEST UNIT 2

A PLANNED UNIT DEVELOPMENT

POR. SE 1/4 SEC. 26
T19N - R19E



AN UNDIVIDED 1/101 INTEREST IN AND TO THE FOLLOWING AREAS:

- LAKERIDGE TERRACE UNIT ONE
- LAKEIRDGE TERRACE UNIT TWO
- LAKERIDGE TERRACE WEST UNIT ONE
- LAKERIDGE TERRACE WEST UNIT TWO
- LAKEIRDGE TERRACE WEST AMENDED UNIT 3
- LAKERIDGE TERRACE WEST UNIT FOUR
- LOT 4937 LAKERIDGE TERRACE WEST UNIT TWO

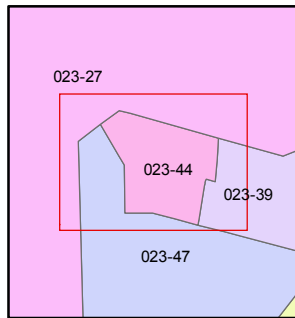
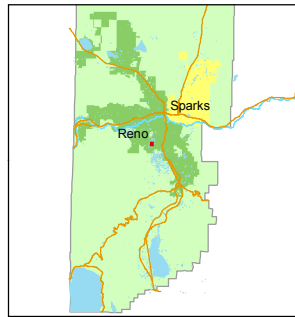
Assessor's Map Number
023-44

STATE OF NEVADA
WASHOE COUNTY
ASSESSOR'S OFFICE
Michael E. Clark, Assessor

1001 East Ninth Street
Building D
Reno, Nevada 89512
(775) 328-2231



1 inch = 40 feet



created by: TWT 6/1/2015

last updated: _____

area previously shown on map(s) _____

NOTE: This map was prepared for the use of the Washoe County Assessor for assessment and illustrative purposes only. It does not represent a survey of the premises. No liability is assumed as to the sufficiency or accuracy of the data delineated hereon.