

(#1439) LAKERIDGE TERRACE WEST UNIT 2

A PLANNED UNIT DEVELOPMENT
PORTION OF SE 1/4 SECTION 26
T19N - R19E

23-39

AN UNDIVIDED 1/101 INTEREST IN AND
TO THE FOLLOWING COMMON AREAS:
LAKERIDGE TERRACE UNIT ONE
LAKERIDGE TERRACE UNIT TWO
LAKERIDGE TERRACE WEST UNIT ONE
LAKERIDGE TERRACE WEST UNIT TWO
LAKERIDGE TERRACE WEST AMENDED UNIT THREE
LAKERIDGE TERRACE WEST UNIT FOUR
LOT 4937 LAKERIDGE TERRACE WEST UNIT TWO

23-47

(#1514) LAKERIDGE TERRACE WEST UNIT 3

23-47

LAKE GARDEN

23-47

23-47

PLACE

WEST

LAKERIDGE

TERRACE

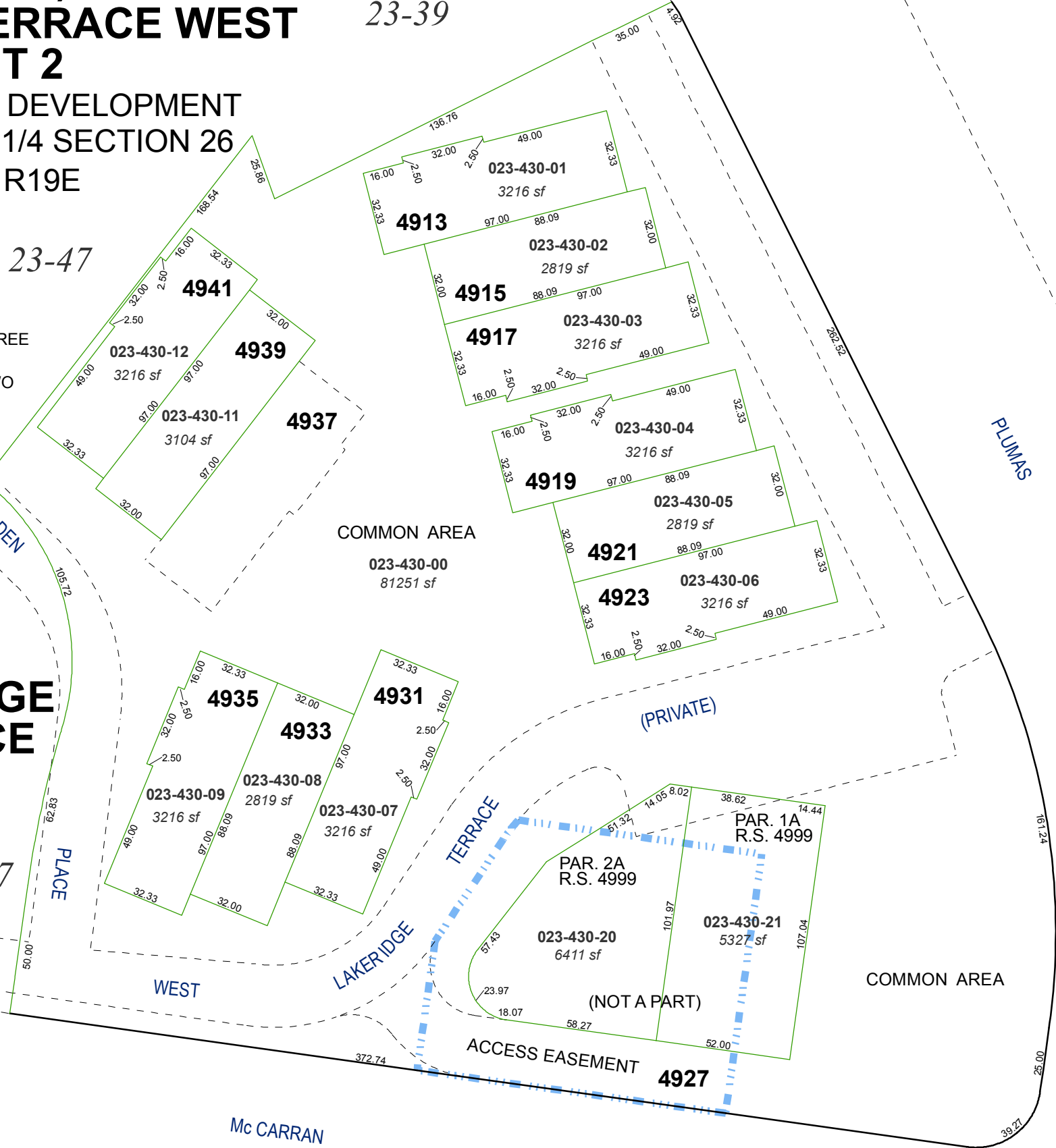
BOULEVARD

PLUMAS

STREET

Mc CARRAN

BOOK 42



23-33

NOTE: Common Area includes square footage
for Lot 4937

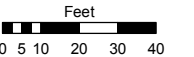
23-34

Assessor's Map Number

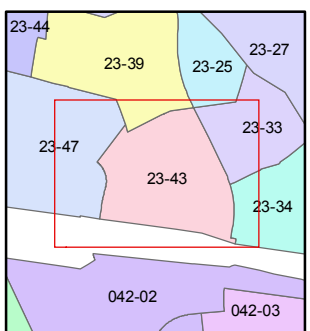
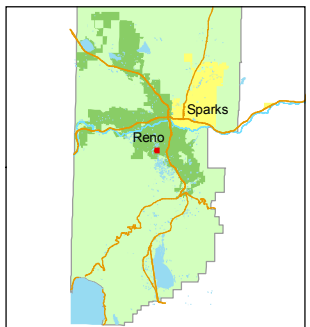
023-43

STATE OF NEVADA
WASHOE COUNTY
ASSESSOR'S OFFICE
Joshua G. Wilson, Assessor

1001 East Ninth Street
Building D
Reno, Nevada 89512
(775) 328-2231



1 inch = 50 feet



created by: TWT 9/9/2009

last updated: _____

area previously shown on map(s)

023-27

NOTE: This map was prepared for the use of the Washoe County Assessor for assessment and illustrative purposes only. It does not represent a survey of the premises. No liability is assumed as to the sufficiency or accuracy of the data delineated hereon.