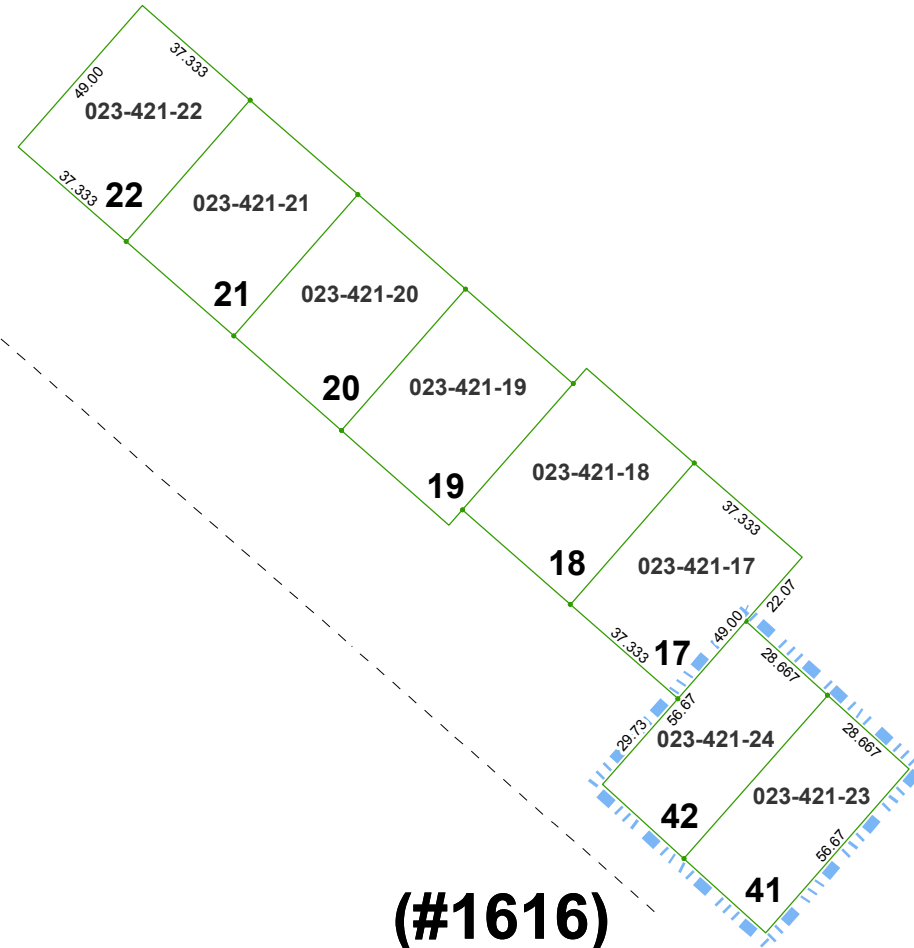


(#1415)
SKYLINE VILLA TOWNHOUSES

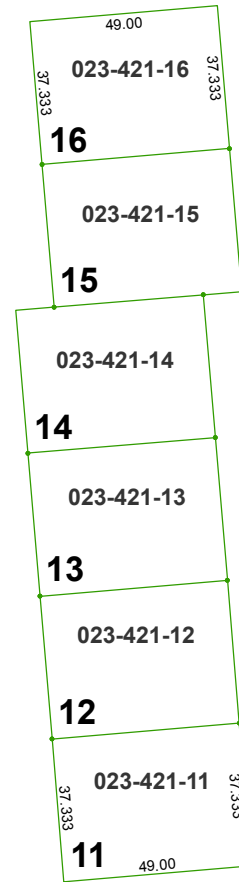
POR. SW 1/4 SEC. 27
T19N - R19E

1/102 INTEREST EACH IN COMMON AREA ONLY
UNITS ONLY

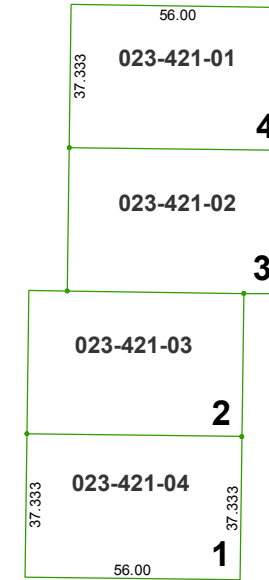
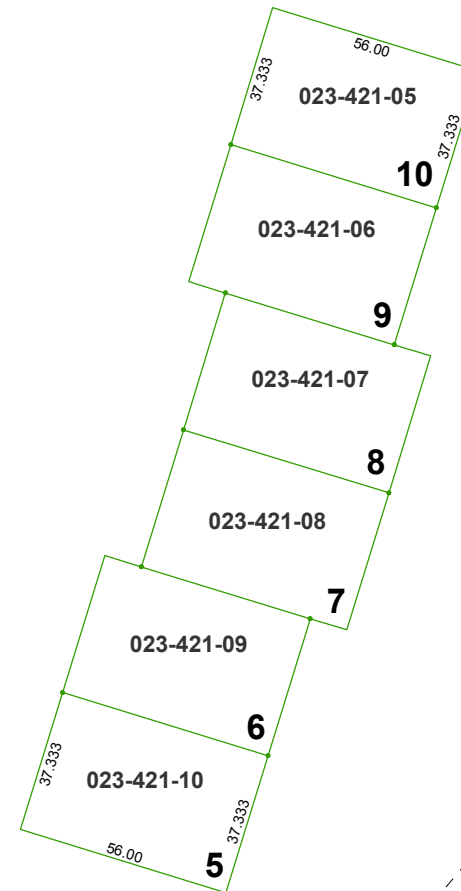
SEE
PG. S2



(#1616)
AMENDED SKYLINE
VILLA TOWNHOUSES



421



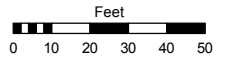
BLVD.
SKYLINE

Assessor's Map Number

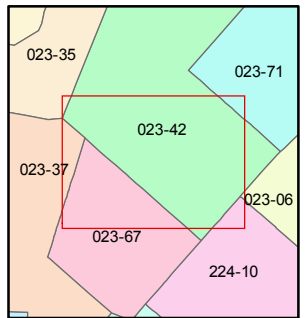
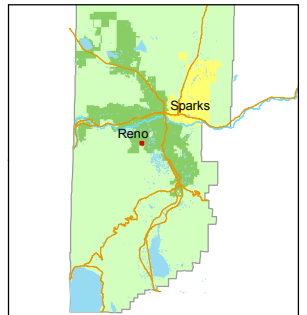
023-42-S1

STATE OF NEVADA
WASHOE COUNTY
ASSESSOR'S OFFICE
Michael E. Clark, Assessor

1001 East Ninth Street
Building D
Reno, Nevada 89512
(775) 328-2231



1 inch = 50 feet



created by: TWT 5/29/2015

last updated: _____

area previously shown on map(s)

NOTE: This map was prepared for the use of the Washoe County Assessor for assessment and illustrative purposes only. It does not represent a survey of the premises. No liability is assumed as to the sufficiency or accuracy of the data delineated hereon.