

(#1390)
VILLAS AT LAKERIDGE UNIT TWO
 A CONDOMINIUM

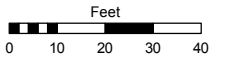
POR. SE 1/4 SEC. 26
 T19N - R19E

Assessor's Map Number

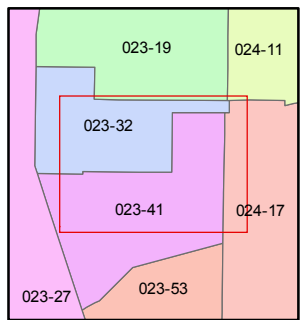
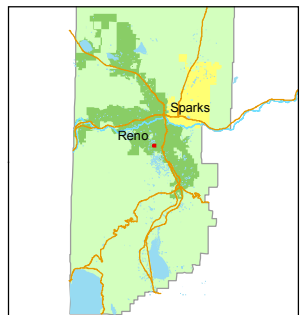
023-41-S2

STATE OF NEVADA
WASHOE COUNTY
 ASSESSOR'S OFFICE
 Michael E. Clark, Assessor

1001 East Ninth Street
 Building D
 Reno, Nevada 89512
 (775) 328-2231



1 inch = 40 feet

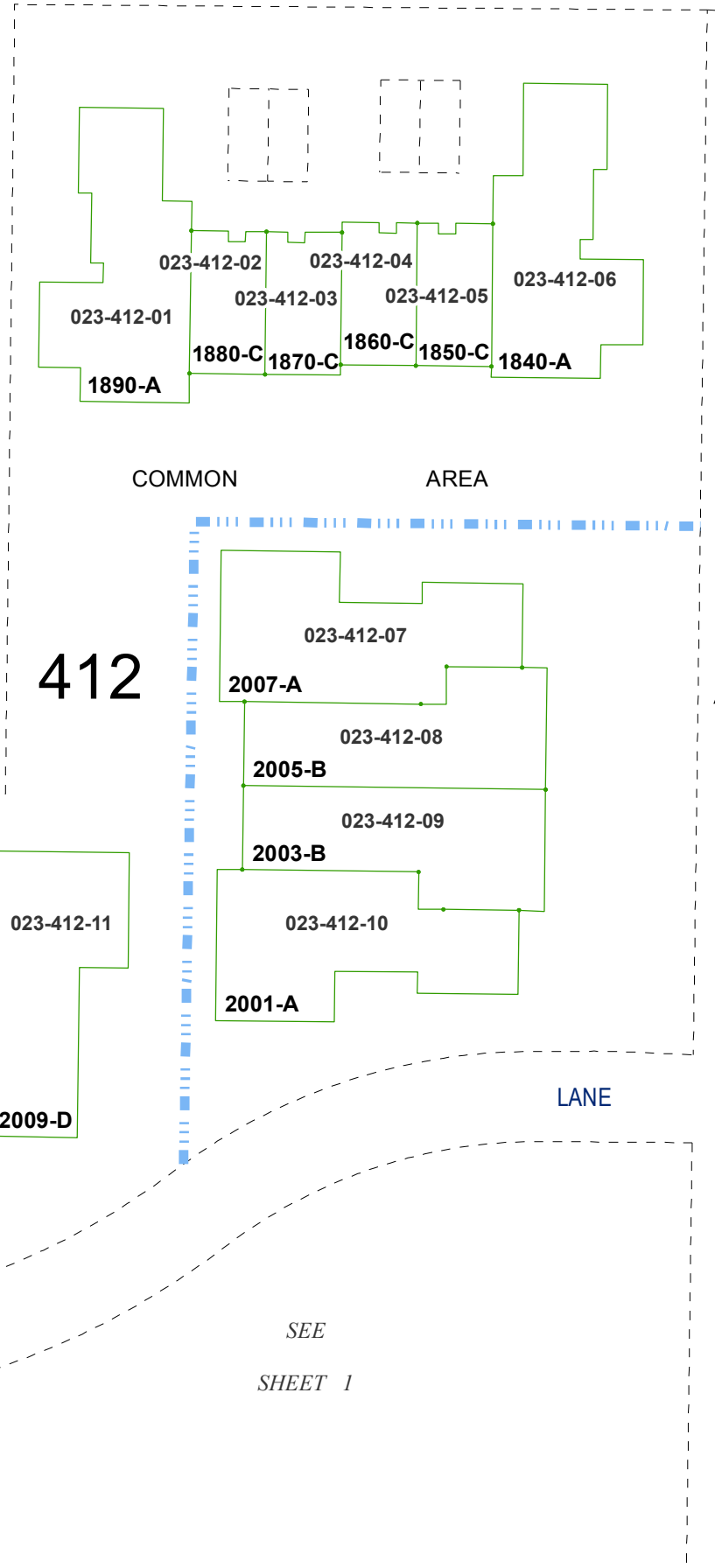
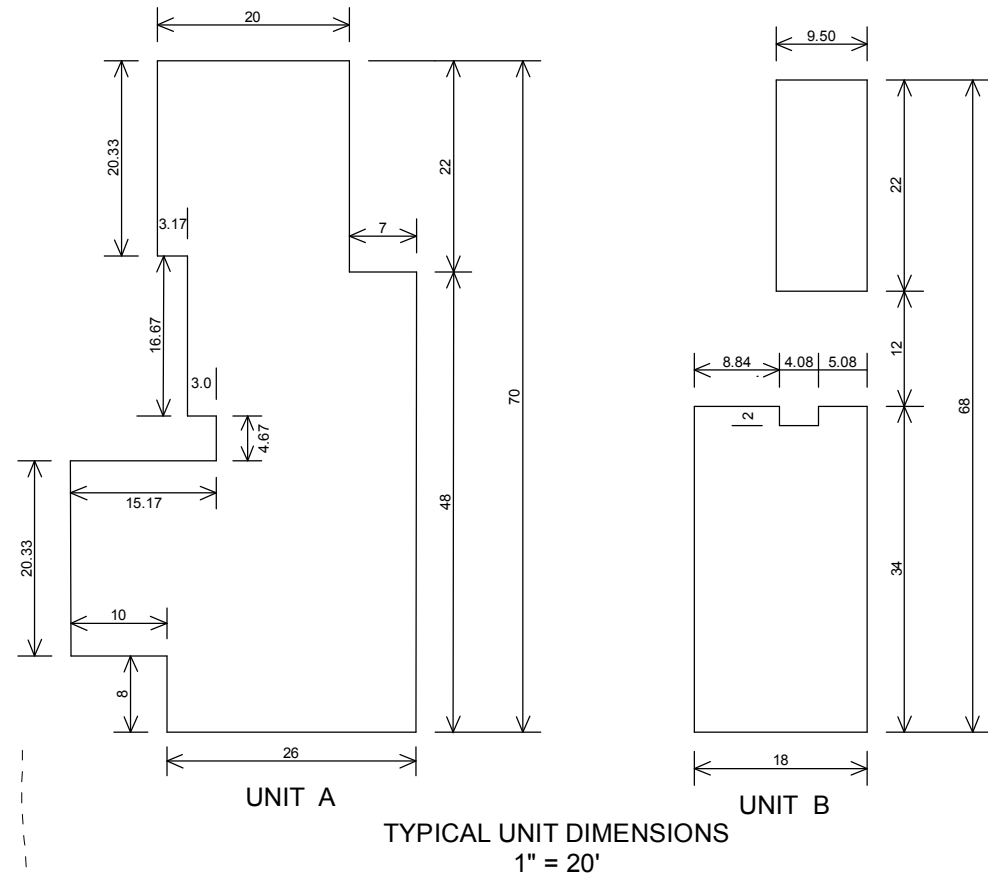


created by: TWT 5/29/2015

last updated: _____

area previously shown on map(s)

NOTE: This map was prepared for the use of the Washoe County Assessor for assessment and illustrative purposes only. It does not represent a survey of the premises. No liability is assumed as to the sufficiency or accuracy of the data delineated hereon.



(#1525)
AMENDED
UNITS

412

SEE
 SHEET 1

VILLA
 WAY
 SOUTH
 BRANCH

DRIVE

LAKESIDE
 LANE