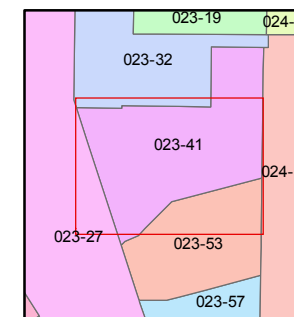
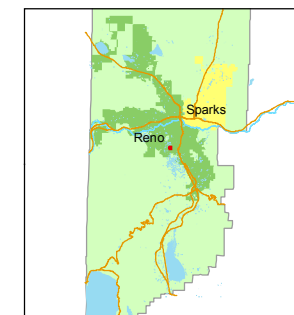


STATE OF NEVADA
WASHOE COUNTY
ASSESSOR'S OFFICE
Michael E. Clark, Assessor

1001 East Ninth Street
Building D
Reno, Nevada 89512
(775) 328-2231



1 inch = 40 feet



created by: TWT 5/28/2015

last updated: _____

area previously shown on map(s)

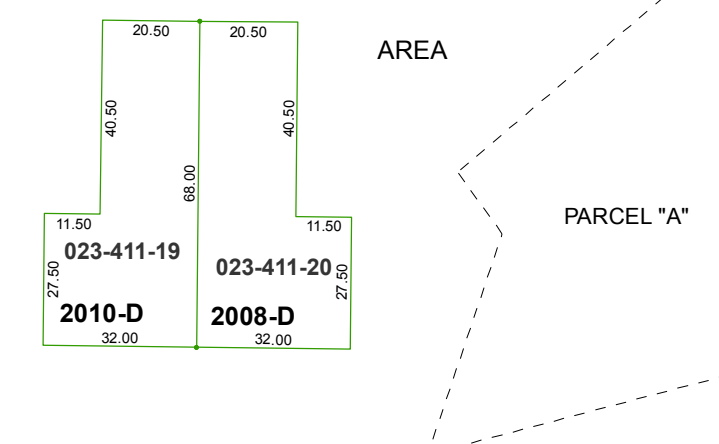
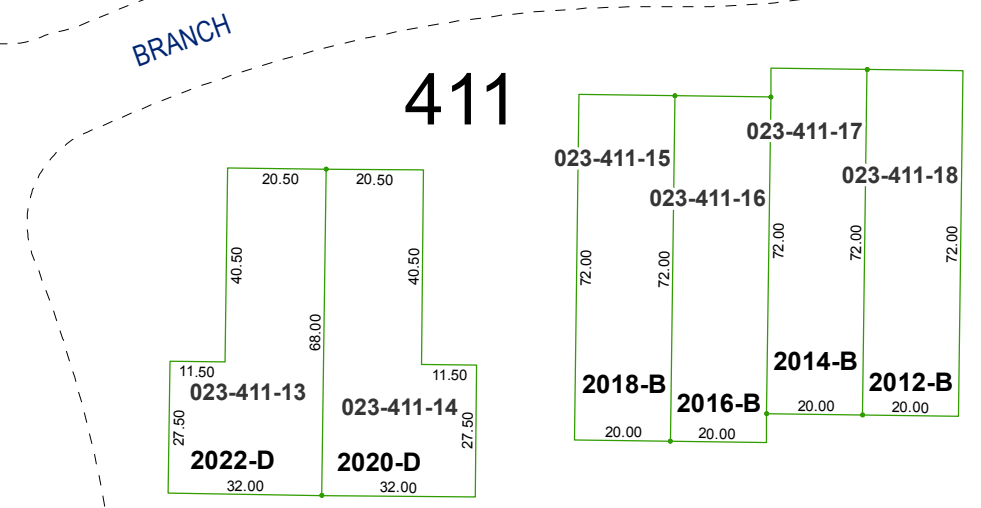
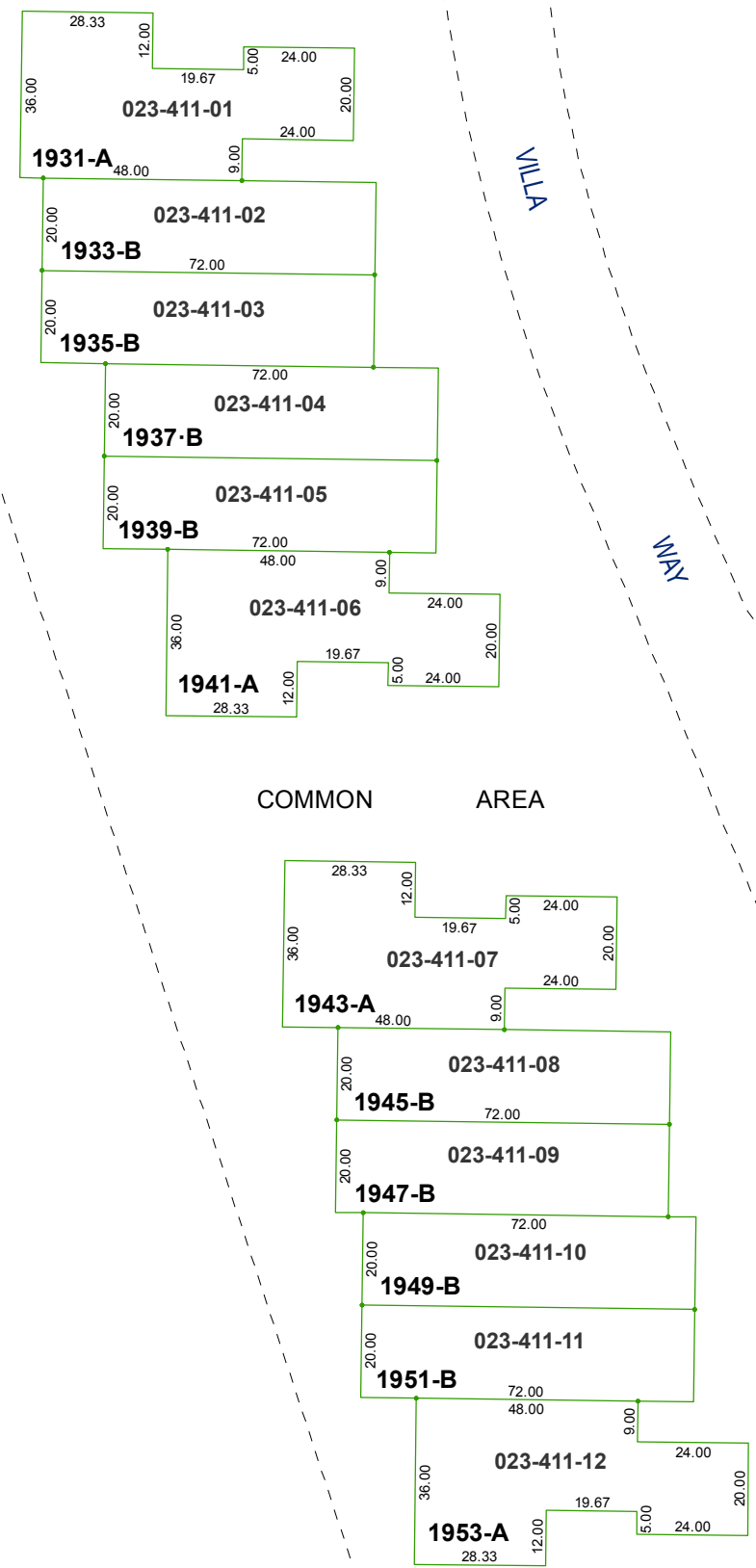
NOTE: This map was prepared for the use of the Washoe County Assessor for assessment and illustrative purposes only. It does not represent a survey of the premises. No liability is assumed as to the sufficiency or accuracy of the data delineated hereon.

(#1525) VILLAS AT LAKERIDGE UNIT TWO - AMENDED

A CONDOMINIUM

POR. SE 1/4 SEC. 26
T19N - R19E

SEE
SHEET 2



COMMON AREA

COMMON AREA

COMMON AREA

PARCEL "A"

COMMON AREA

411