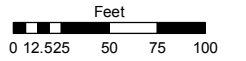


**(#1372)**  
**LAKE RIDGE UNIT FOUR**  
 POR. OF SW 1/4 SECTION 26, T19N - R19E

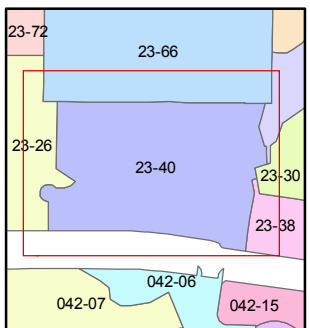
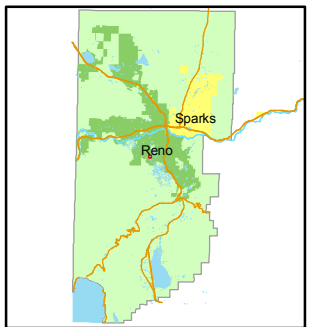
Assessor's Map Number  
**023-40**

STATE OF NEVADA  
**WASHOE COUNTY**  
**ASSESSOR'S OFFICE**  
 Joshua G. Wilson, Assessor

1001 East Ninth Street  
 Building D  
 Reno, Nevada 89512  
 (775) 328-2231

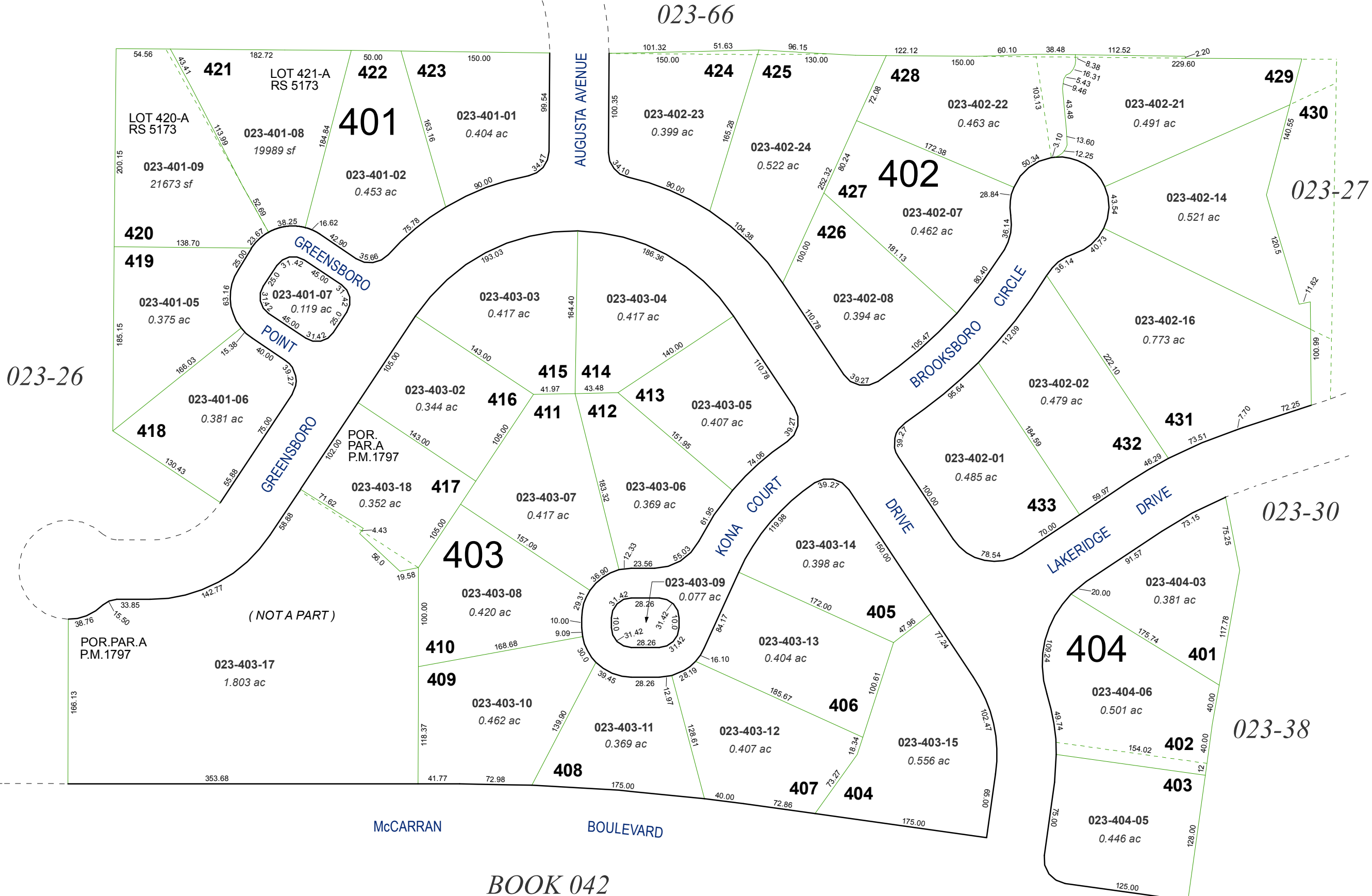


1 inch = 100 feet



created by: KSB 7/07/09  
 last updated: \_\_\_\_\_  
 area previously shown on map(s)  
023-28

NOTE: This map was prepared for the use of the Washoe County Assessor for assessment and illustrative purposes only. It does not represent a survey of the premises. No liability is assumed as to the sufficiency or accuracy of the data delineated hereon.



*BOOK 042*