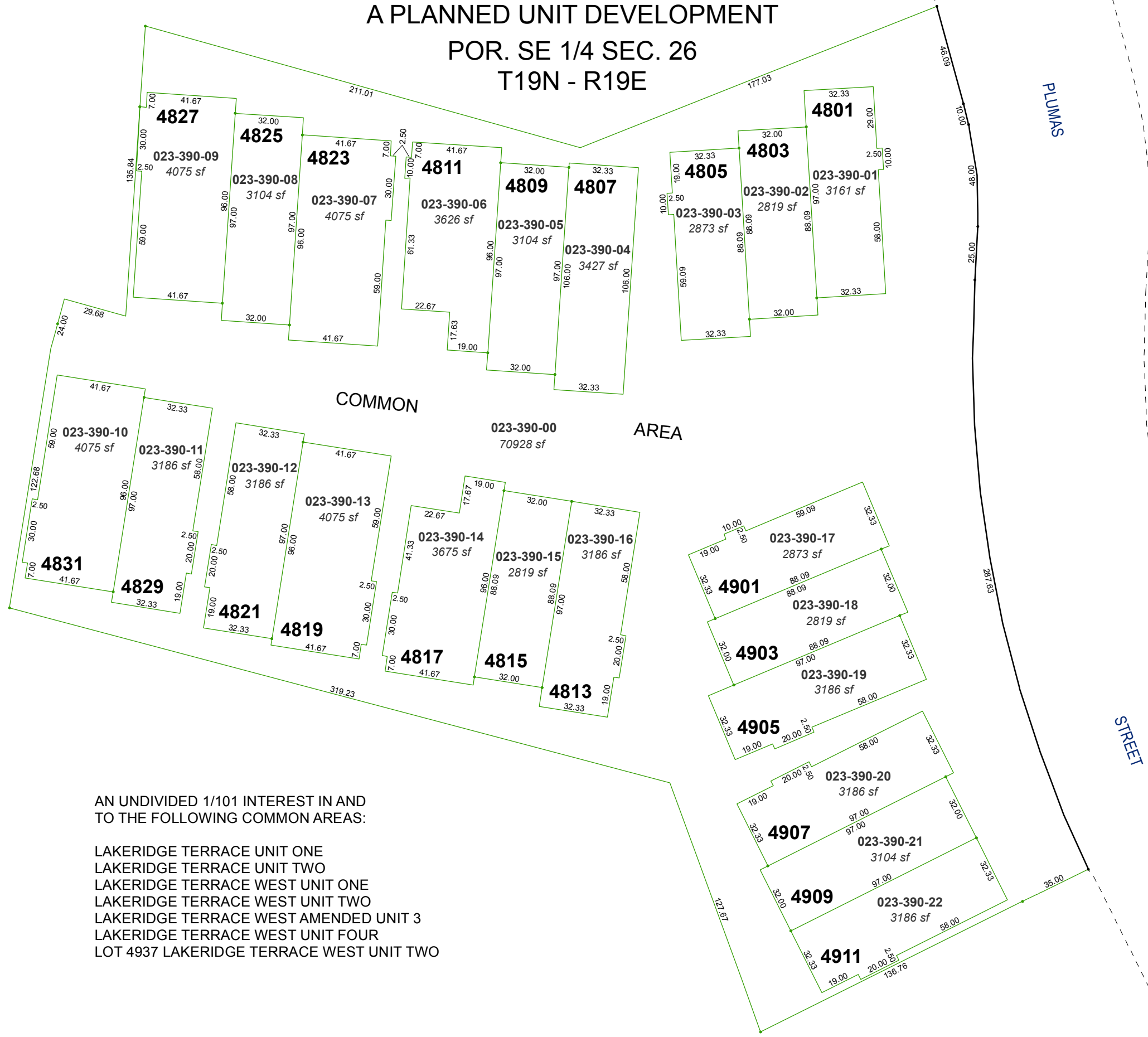


# (#1365) LAKERIDGE TERRACE WEST UNIT 1

## A PLANNED UNIT DEVELOPMENT

POR. SE 1/4 SEC. 26  
T19N - R19E



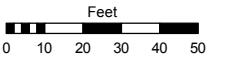
AN UNDIVIDED 1/101 INTEREST IN AND TO THE FOLLOWING COMMON AREAS:  
 LAKERIDGE TERRACE UNIT ONE  
 LAKERIDGE TERRACE UNIT TWO  
 LAKERIDGE TERRACE WEST UNIT ONE  
 LAKERIDGE TERRACE WEST UNIT TWO  
 LAKERIDGE TERRACE WEST AMENDED UNIT 3  
 LAKERIDGE TERRACE WEST UNIT FOUR  
 LOT 4937 LAKERIDGE TERRACE WEST UNIT TWO

Assessor's Map Number

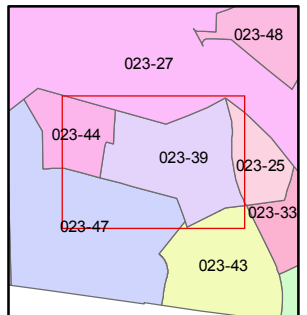
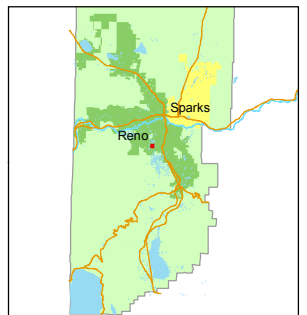
**023-39**

STATE OF NEVADA  
**WASHOE COUNTY**  
 ASSESSOR'S OFFICE  
 Michael E. Clark, Assessor

1001 East Ninth Street  
 Building D  
 Reno, Nevada 89512  
 (775) 328-2231



1 inch = 50 feet



created by: TWT 5/28/2015

last updated: \_\_\_\_\_

area previously shown on map(s) \_\_\_\_\_

NOTE: This map was prepared for the use of the Washoe County Assessor for assessment and illustrative purposes only. It does not represent a survey of the premises. No liability is assumed as to the sufficiency or accuracy of the data delineated hereon.