

LAKE RIDGE DRIVE

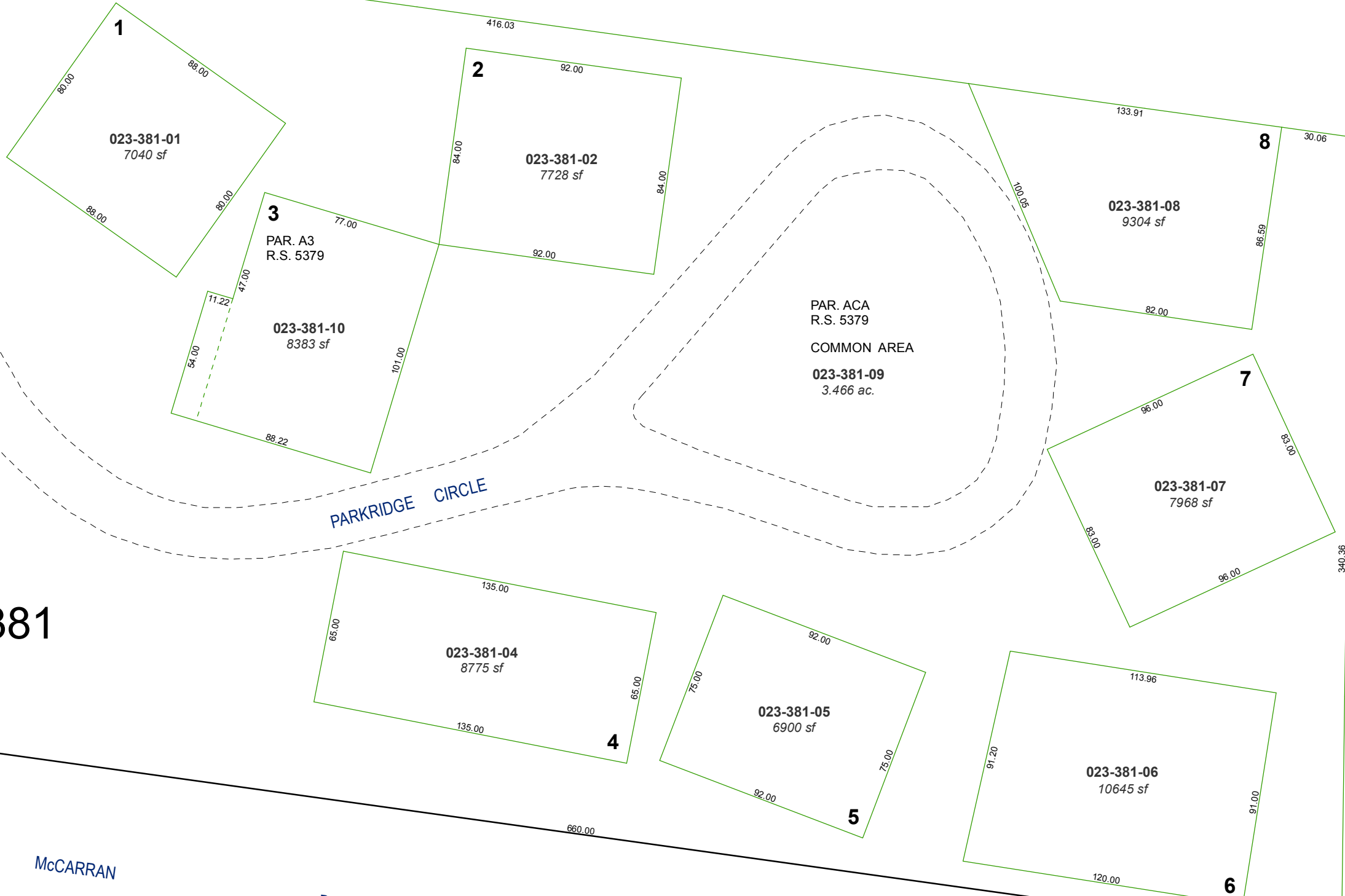
# (#2485) AMENDED LAKERIDGE HEIGHTS

A DENSITY SUBDIVISION

A POR. OF THE SW ¼ OF SEC. 26  
T19N - R19E

1/8 INTEREST IN COMMON AREA IN EACH UNIT

381



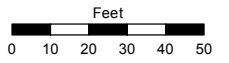
NOTE  
PARKRIDGE CIRCLE WAS DIGITIZED FROM AN AERIAL PHOTO

Assessor's Map Number

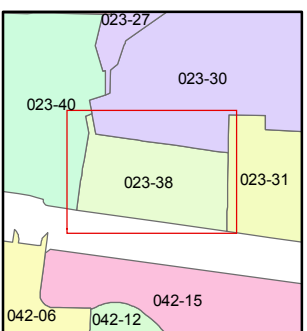
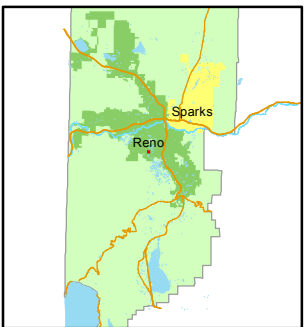
**023-38**

STATE OF NEVADA  
**WASHOE COUNTY**  
ASSESSOR'S OFFICE  
Joshua G. Wilson, Assessor

1001 East Ninth Street  
Building D  
Reno, Nevada 89512  
(775) 328-2231



1 inch = 50 feet



created by: NLH 2/14/2012

last updated: \_\_\_\_\_

area previously shown on map(s)  
\_\_\_\_\_

NOTE: This map was prepared for the use of the Washoe County Assessor for assessment and illustrative purposes only. It does not represent a survey of the premises. No liability is assumed as to the sufficiency or accuracy of the data delineated herein.