

# (#1296) LAKERIDGE TERRACE UNIT TWO

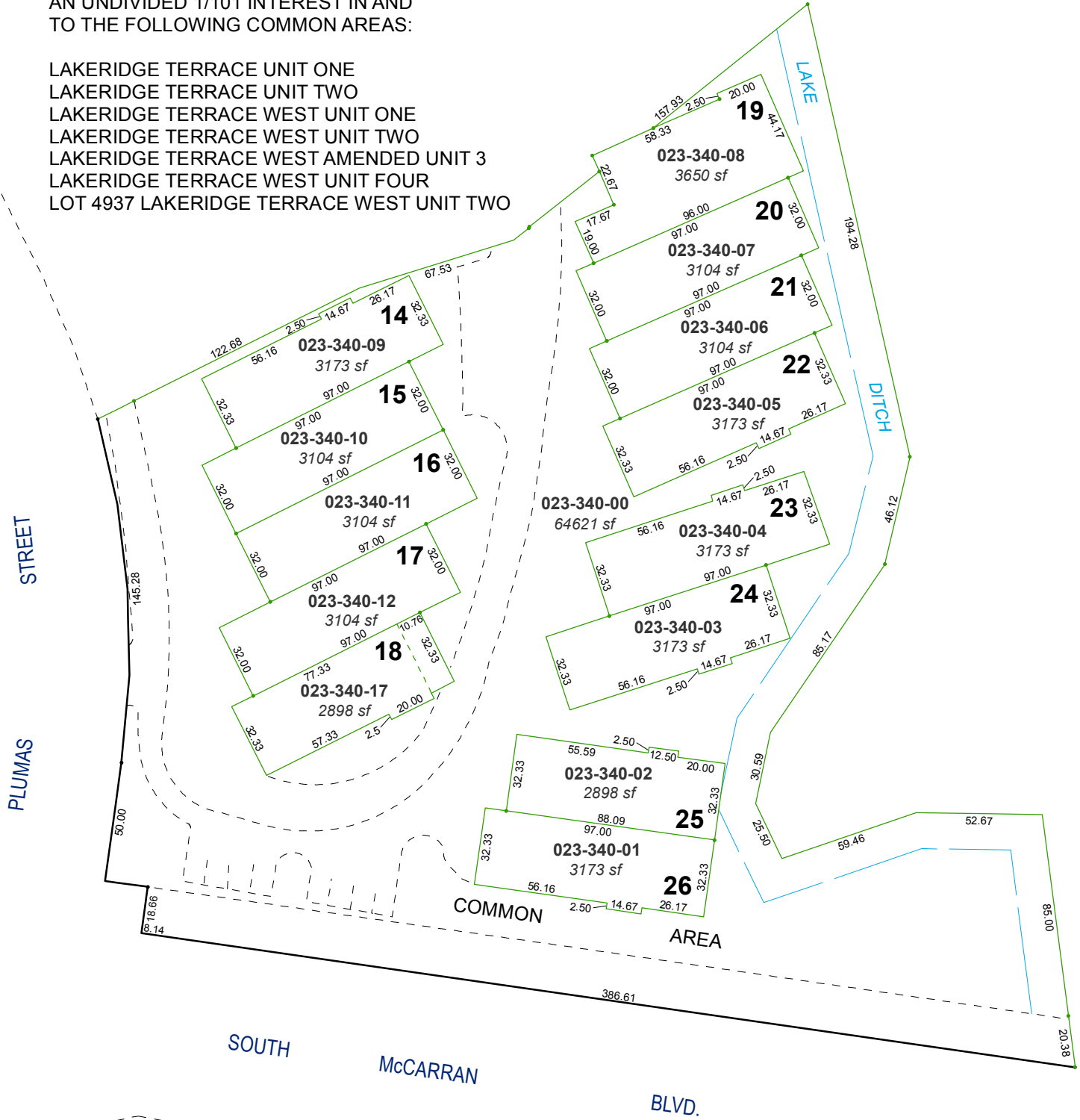
A PLANNED UNIT DEVELOPMENT

POR SE 1/4 SEC. 26

T19N - R19E

AN UNDIVIDED 1/101 INTEREST IN AND  
TO THE FOLLOWING COMMON AREAS:

- LAKERIDGE TERRACE UNIT ONE
- LAKERIDGE TERRACE UNIT TWO
- LAKERIDGE TERRACE WEST UNIT ONE
- LAKERIDGE TERRACE WEST UNIT TWO
- LAKERIDGE TERRACE WEST AMENDED UNIT 3
- LAKERIDGE TERRACE WEST UNIT FOUR
- LOT 4937 LAKERIDGE TERRACE WEST UNIT TWO

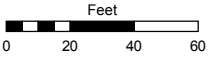


Assessor's Map Number

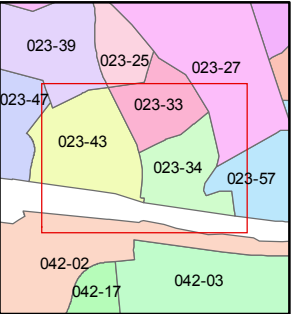
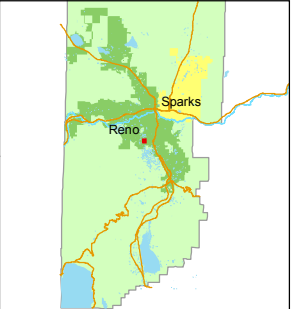
**023-34**

STATE OF NEVADA  
**WASHOE COUNTY**  
ASSESSOR'S OFFICE  
Michael E. Clark, Assessor

1001 East Ninth Street  
Building D  
Reno, Nevada 89512  
(775) 328-2231



1 inch = 60 feet



created by: TWT 5/26/2015

last updated: \_\_\_\_\_

area previously shown on map(s) \_\_\_\_\_

NOTE: This map was prepared for the use of the Washoe County Assessor for assessment and illustrative purposes only. It does not represent a survey of the premises. No liability is assumed as to the sufficiency or accuracy of the data delineated hereon.