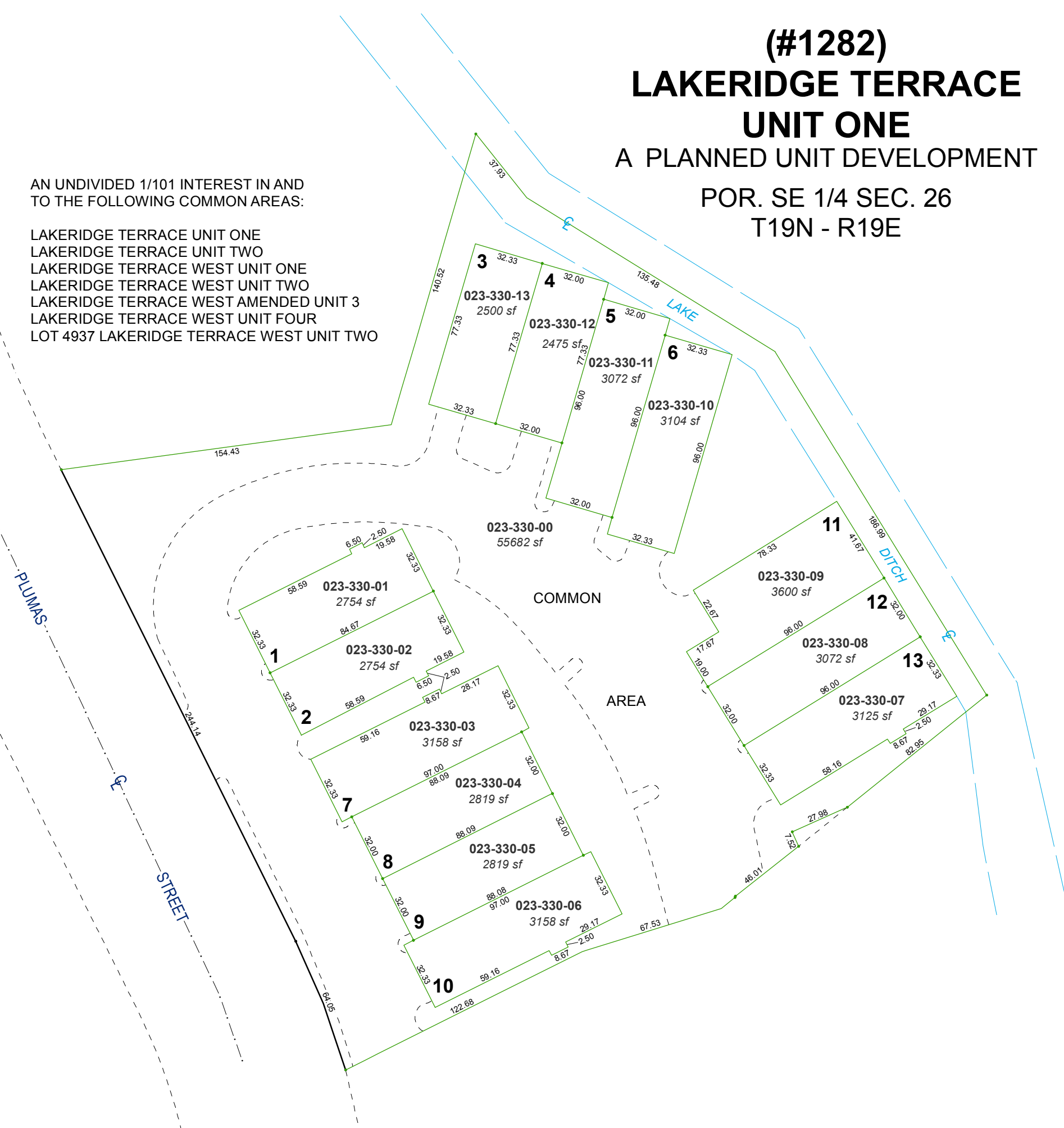


(#1282)
LAKERIDGE TERRACE
UNIT ONE
 A PLANNED UNIT DEVELOPMENT

POR. SE 1/4 SEC. 26
 T19N - R19E

AN UNDIVIDED 1/101 INTEREST IN AND
 TO THE FOLLOWING COMMON AREAS:

- LAKERIDGE TERRACE UNIT ONE
- LAKERIDGE TERRACE UNIT TWO
- LAKERIDGE TERRACE WEST UNIT ONE
- LAKERIDGE TERRACE WEST UNIT TWO
- LAKERIDGE TERRACE WEST AMENDED UNIT 3
- LAKERIDGE TERRACE WEST UNIT FOUR
- LOT 4937 LAKERIDGE TERRACE WEST UNIT TWO

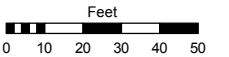


Assessor's Map Number

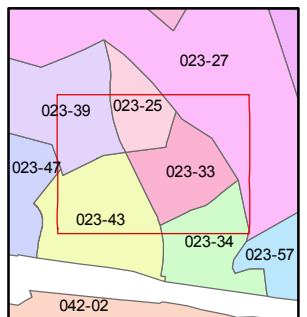
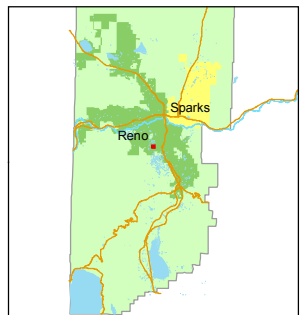
023-33

STATE OF NEVADA
WASHOE COUNTY
 ASSESSOR'S OFFICE
 Michael E. Clark, Assessor

1001 East Ninth Street
 Building D
 Reno, Nevada 89512
 (775) 328-2231



1 inch = 50 feet



created by: TWT 5/26/2015

last updated: _____

area previously shown on map(s)

NOTE: This map was prepared for the use of the Washoe County Assessor for assessment and illustrative purposes only. It does not represent a survey of the premises. No liability is assumed as to the sufficiency or accuracy of the data delineated hereon.