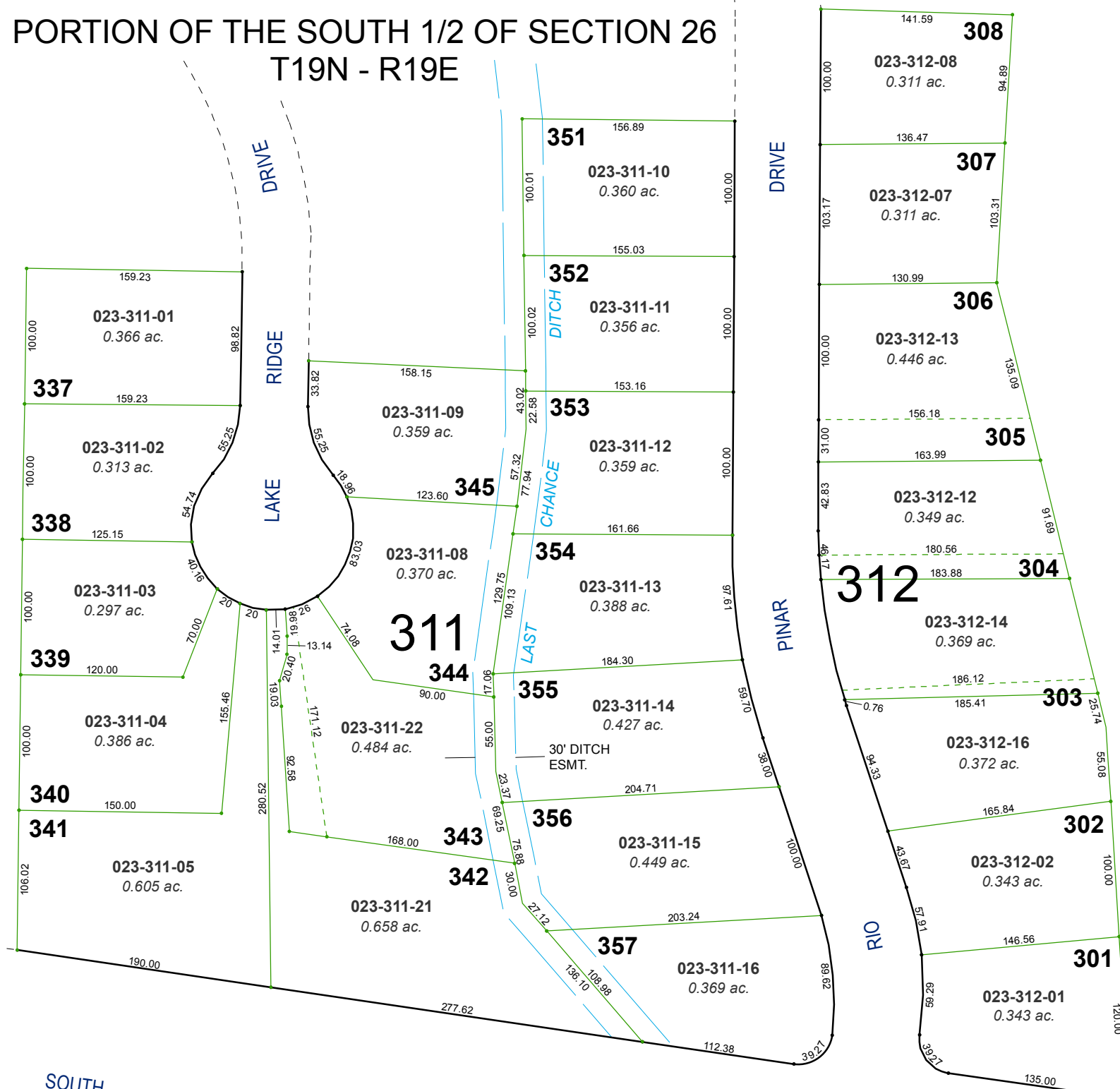


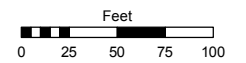
**(#1232)**  
**LAKE RIDGE UNIT THREE**  
 PORTION OF THE SOUTH 1/2 OF SECTION 26  
 T19N - R19E



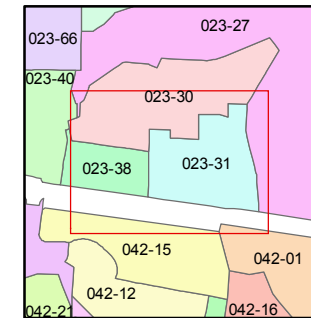
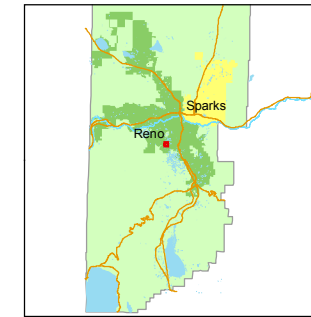
Assessor's Map Number  
**023-31**

STATE OF NEVADA  
**WASHOE COUNTY**  
 ASSESSOR'S OFFICE  
 Michael E. Clark, Assessor

1001 East Ninth Street  
 Building D  
 Reno, Nevada 89512  
 (775) 328-2231



1 inch = 100 feet



created by: TWT 5/22/2015  
 last updated: \_\_\_\_\_  
 area previously shown on map(s) \_\_\_\_\_

NOTE: This map was prepared for the use of the Washoe County Assessor for assessment and illustrative purposes only. It does not represent a survey of the premises. No liability is assumed as to the sufficiency or accuracy of the data delineated hereon.