

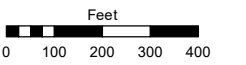
PORTIONS OF SW¼ SECTION 26
& E½ OF SECTION 27
T19N - R19E

Assessor's Map Number

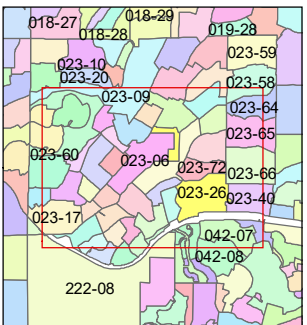
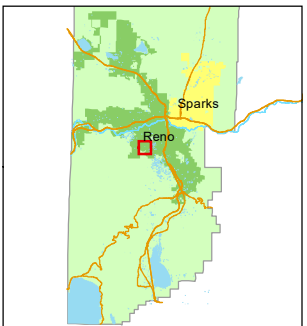
023-26

STATE OF NEVADA
WASHOE COUNTY
ASSESSOR'S OFFICE

1001 East Ninth Street, Building D
Reno, Nevada 89512
(775) 328-2231



1 inch = 400 feet



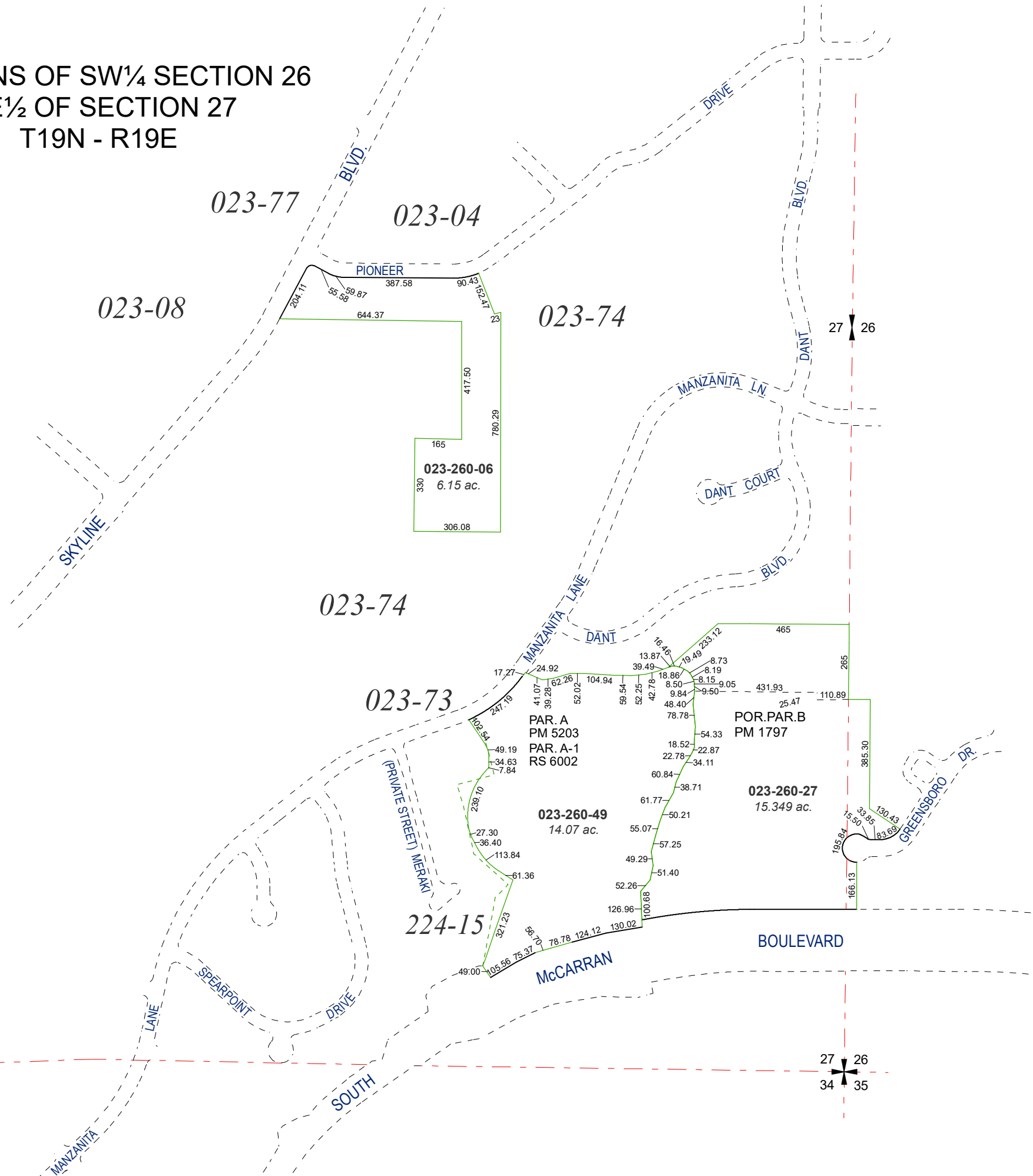
created by: TWT 05/21/2015

updated: EMG 01/21/16 JMO 10/30/18

SR 06/14/19

area previously shown on map(s):

NOTE: This map was prepared for the use of the Washoe County Assessor for assessment and illustrative purposes only. It does not represent a survey of the premises. No liability is assumed as to the sufficiency or accuracy of the data delineated hereon.



27 26

27 26
34 35