

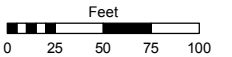
POR. OF NW 1/4 OF NW 1/4 OF SEC. 27
T19N - R19E

Assessor's Map Number

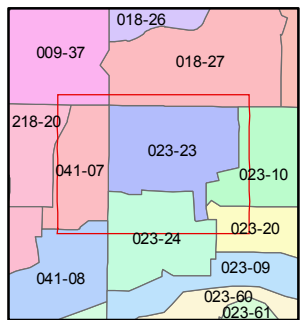
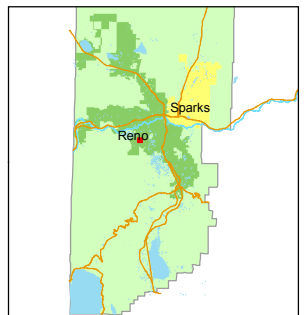
023-23

STATE OF NEVADA
WASHOE COUNTY
ASSESSOR'S OFFICE
Michael E. Clark, Assessor

1001 East Ninth Street
Building D
Reno, Nevada 89512
(775) 328-2231



1 inch = 100 feet

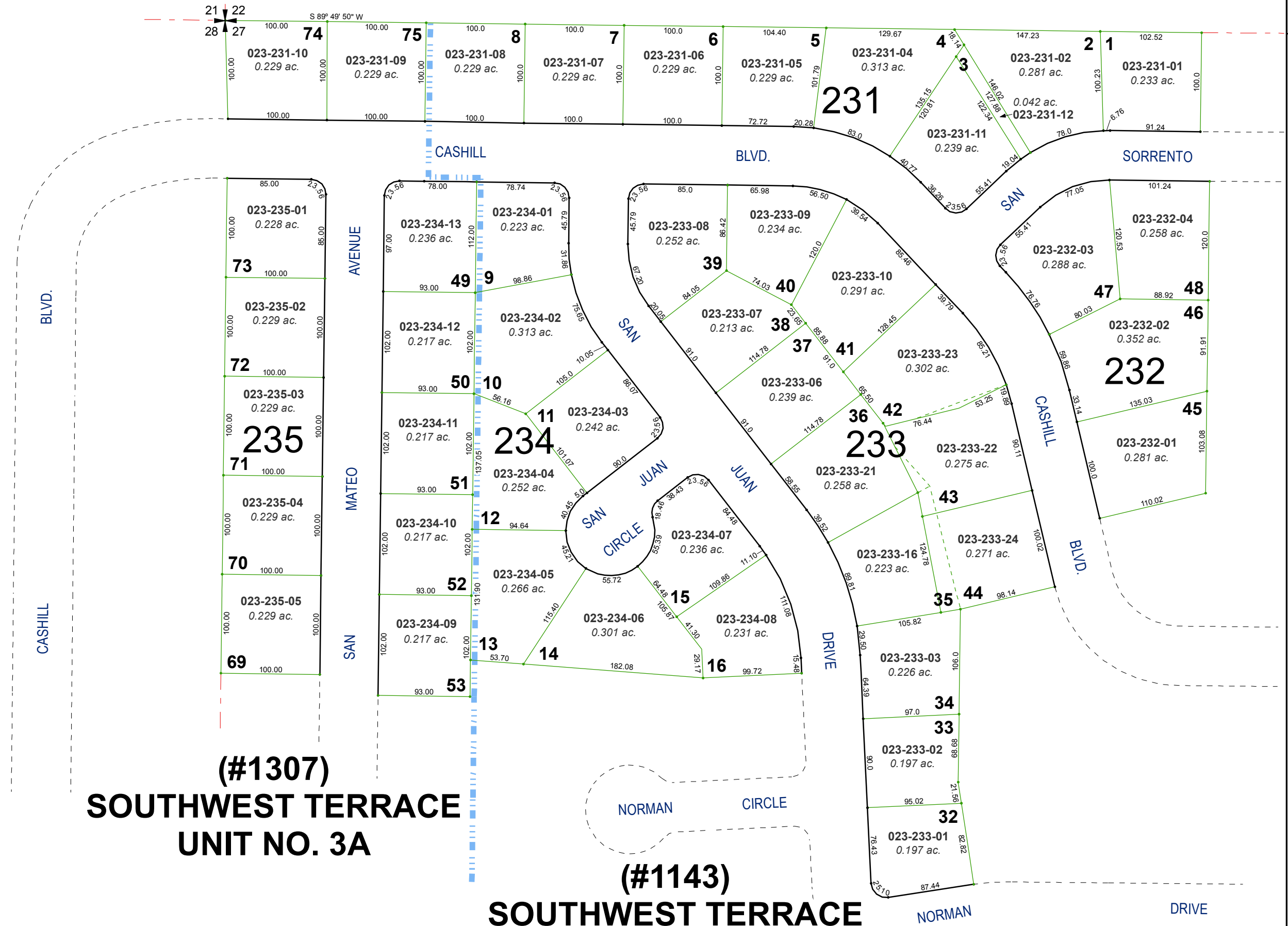


created by: TWT 5/18/2015

last updated: _____

area previously shown on map(s) _____

NOTE: This map was prepared for the use of the Washoe County Assessor for assessment and illustrative purposes only. It does not represent a survey of the premises. No liability is assumed as to the sufficiency or accuracy of the data delineated hereon.



(#1307)
SOUTHWEST TERRACE
UNIT NO. 3A

(#1143)
SOUTHWEST TERRACE
UNIT NO. 3