

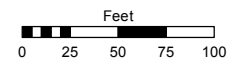
# TWIN LAKES ESTATES NO.1

## PORTION OF THE SW 1/4 OF SEC. 27, T19N - R19E

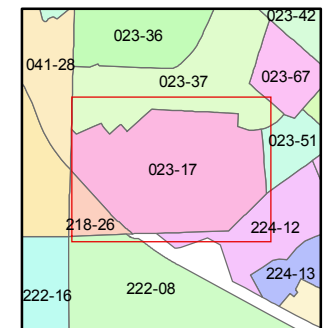
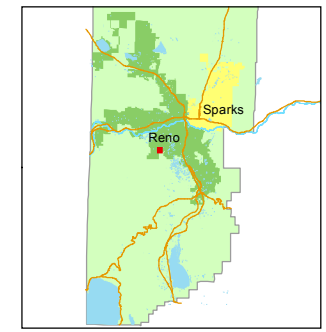
Assessor's Map Number  
**023-17**

STATE OF NEVADA  
**WASHOE COUNTY**  
ASSESSOR'S OFFICE  
Michael E. Clark, Assessor

1001 East Ninth Street  
Building D  
Reno, Nevada 89512  
(775) 328-2231



1 inch = 100 feet

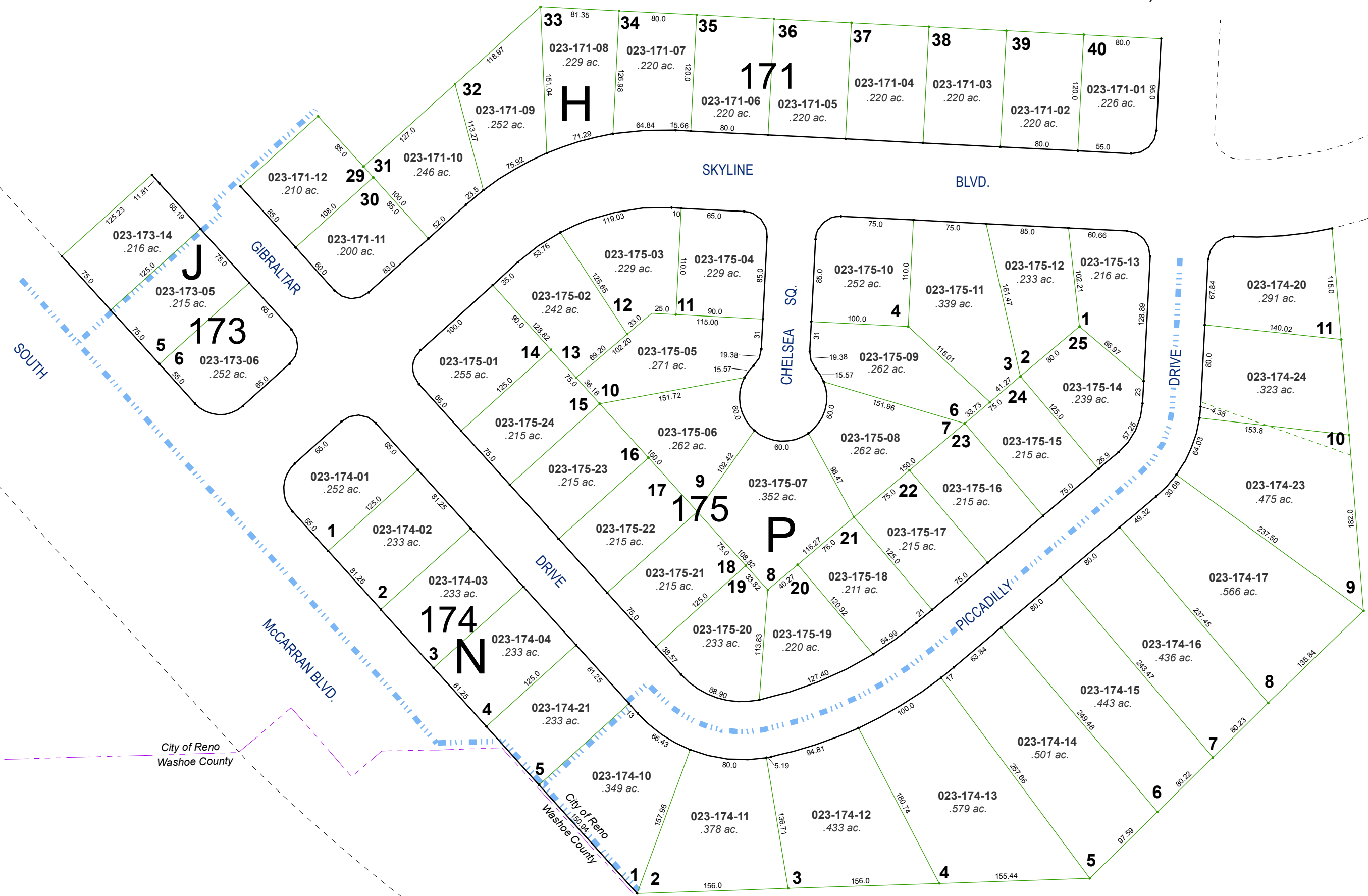


created by: CFB 02/06/2015

last updated: \_\_\_\_\_

area previously shown on map(s) \_\_\_\_\_

NOTE: This map was prepared for the use of the Washoe County Assessor for assessment and illustrative purposes only. It does not represent a survey of the premises. No liability is assumed as to the sufficiency or accuracy of the data delineated hereon.



# SKYLINE HEIGHTS SUB. NO. 6

City of Reno  
Washoe County

City of Reno  
Washoe County