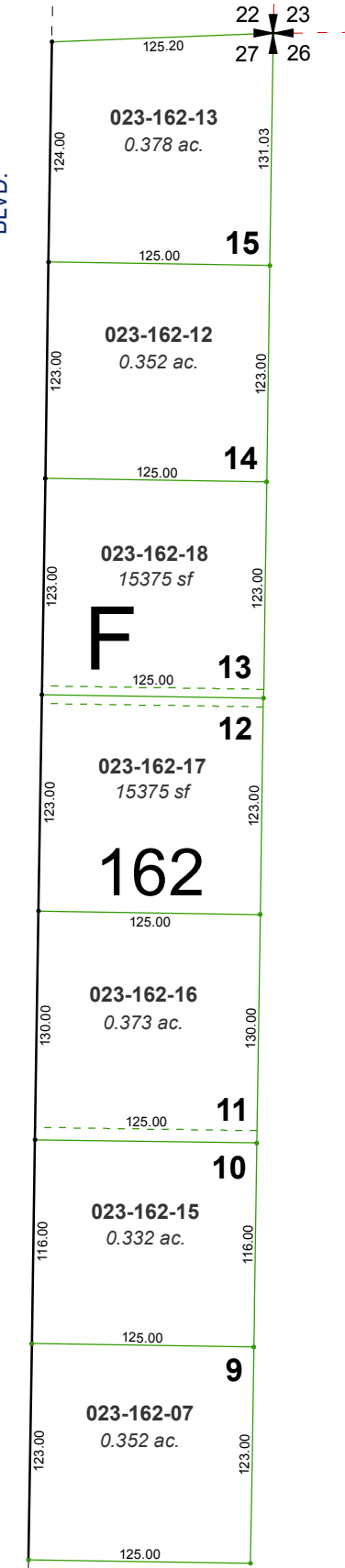
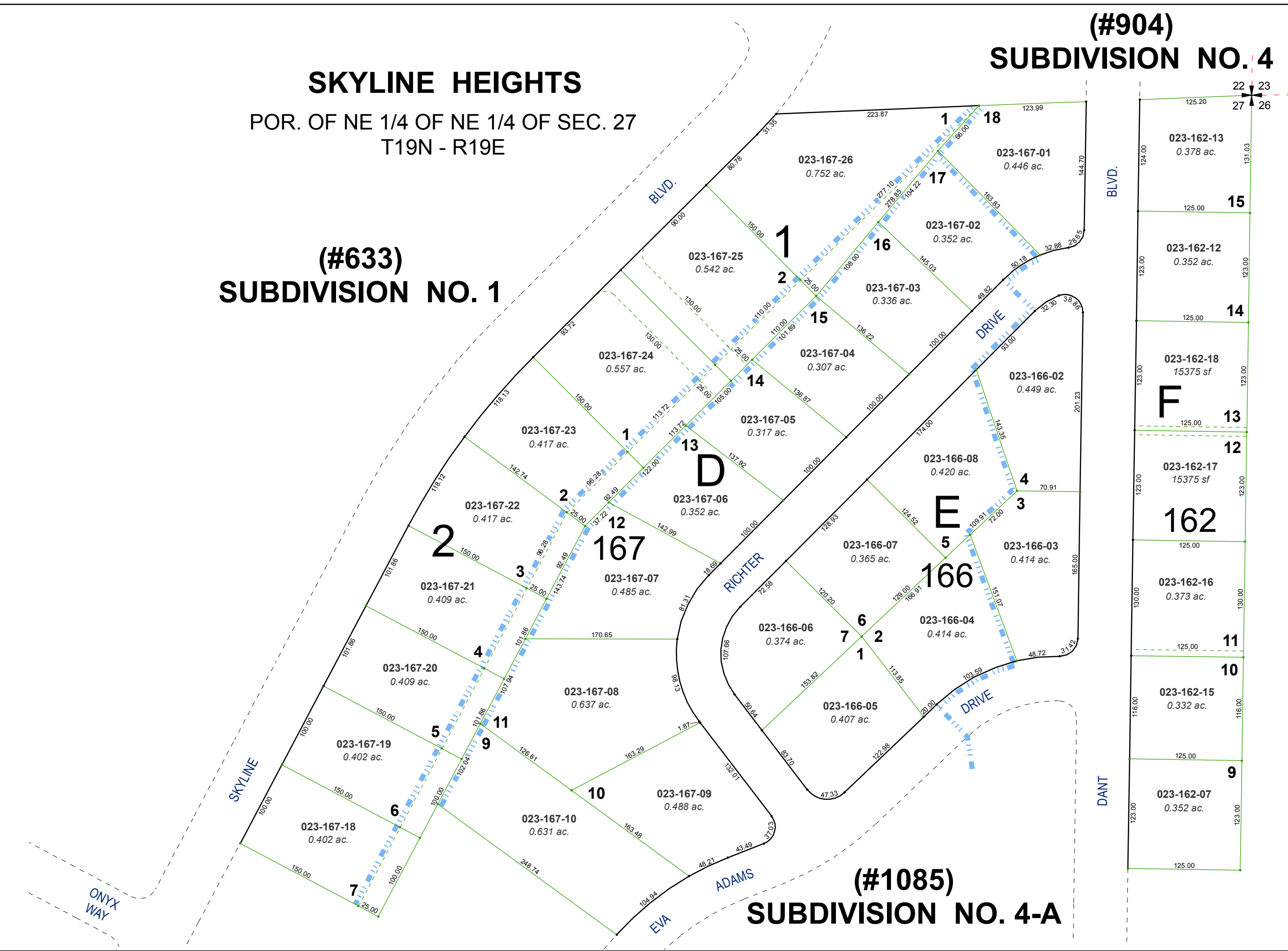


SKYLINE HEIGHTS
 POR. OF NE 1/4 OF NE 1/4 OF SEC. 27
 T19N - R19E

**(#633)
 SUBDIVISION NO. 1**

**(#904)
 SUBDIVISION NO. 4**

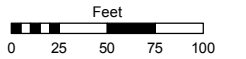
**(#1085)
 SUBDIVISION NO. 4-A**



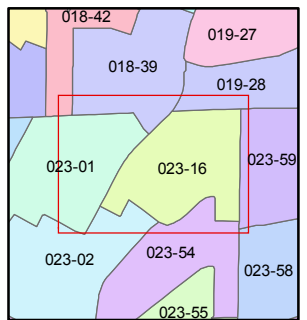
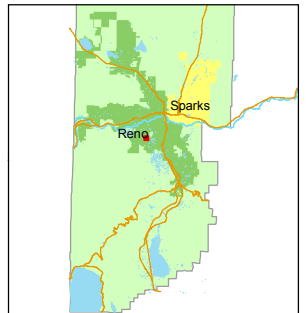
Assessor's Map Number
023-16

STATE OF NEVADA
WASHOE COUNTY
 ASSESSOR'S OFFICE
 Michael E. Clark, Assessor

1001 East Ninth Street
 Building D
 Reno, Nevada 89512
 (775) 328-2231



1 inch = 100 feet



created by: TWT 5/12/2015

last updated: _____

area previously shown on map(s)

NOTE: This map was prepared for the use of the Washoe County Assessor for assessment and illustrative purposes only. It does not represent a survey of the premises. No liability is assumed as to the sufficiency or accuracy of the data delineated hereon.