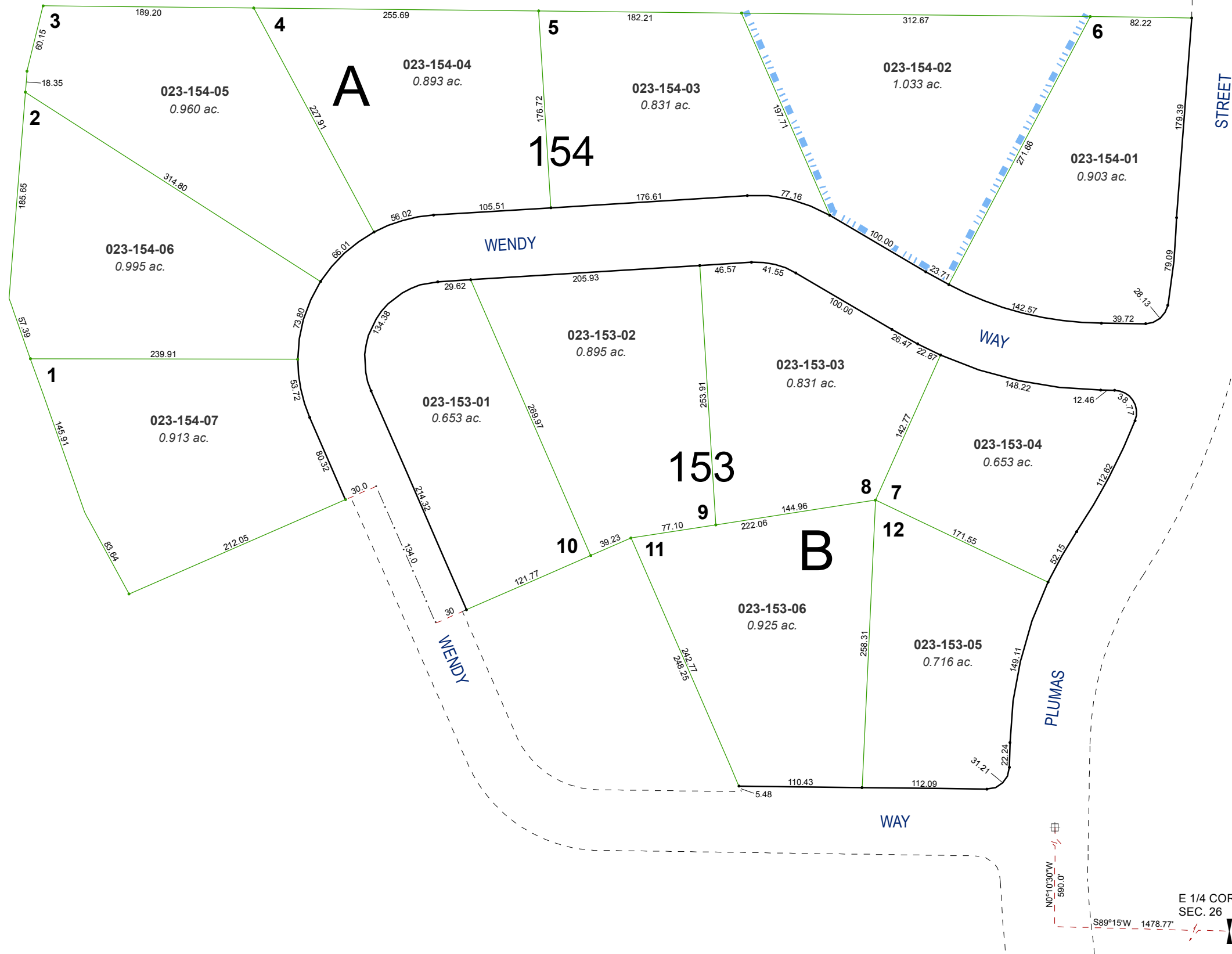


(#1720) AMENDED BROADMOOR ESTATES

PORTION OF SW 1/4 OF NE 1/4 OF SEC. 26
T19N - R19E

ANNEX. T.M. 3656, ORD. #4950

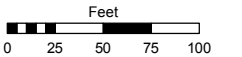


Assessor's Map Number

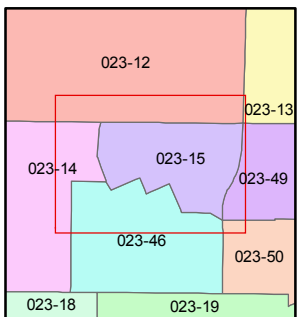
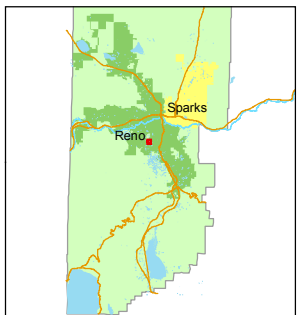
023-15

STATE OF NEVADA
WASHOE COUNTY
 ASSESSOR'S OFFICE
 Michael E. Clark, Assessor

1001 East Ninth Street
 Building D
 Reno, Nevada 89512
 (775) 328-2231



1 inch = 100 feet



created by: TWT 5/12/2015

last updated: _____

area previously shown on map(s) _____

NOTE: This map was prepared for the use of the Washoe County Assessor for assessment and illustrative purposes only. It does not represent a survey of the premises. No liability is assumed as to the sufficiency or accuracy of the data delineated hereon.