

(#263) GREENFIELD SUBDIVISION BLOCK "A"

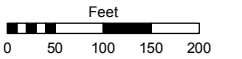
PORTION OF THE NE 1/4 OF THE NE 1/4 OF SECTION 26
T19N - R19E
ANNEXATION T.M. 3656, ORD. #4950

Assessor's Map Number

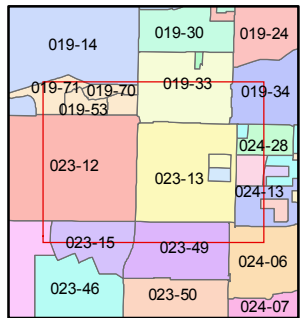
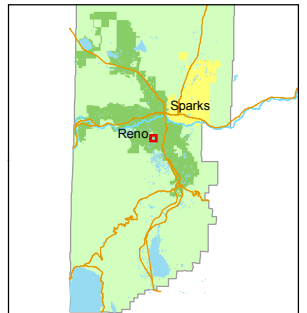
023-13

STATE OF NEVADA
WASHOE COUNTY
ASSESSOR'S OFFICE
Michael E. Clark, Assessor

1001 East Ninth Street
Building D
Reno, Nevada 89512
(775) 328-2231



1 inch = 200 feet

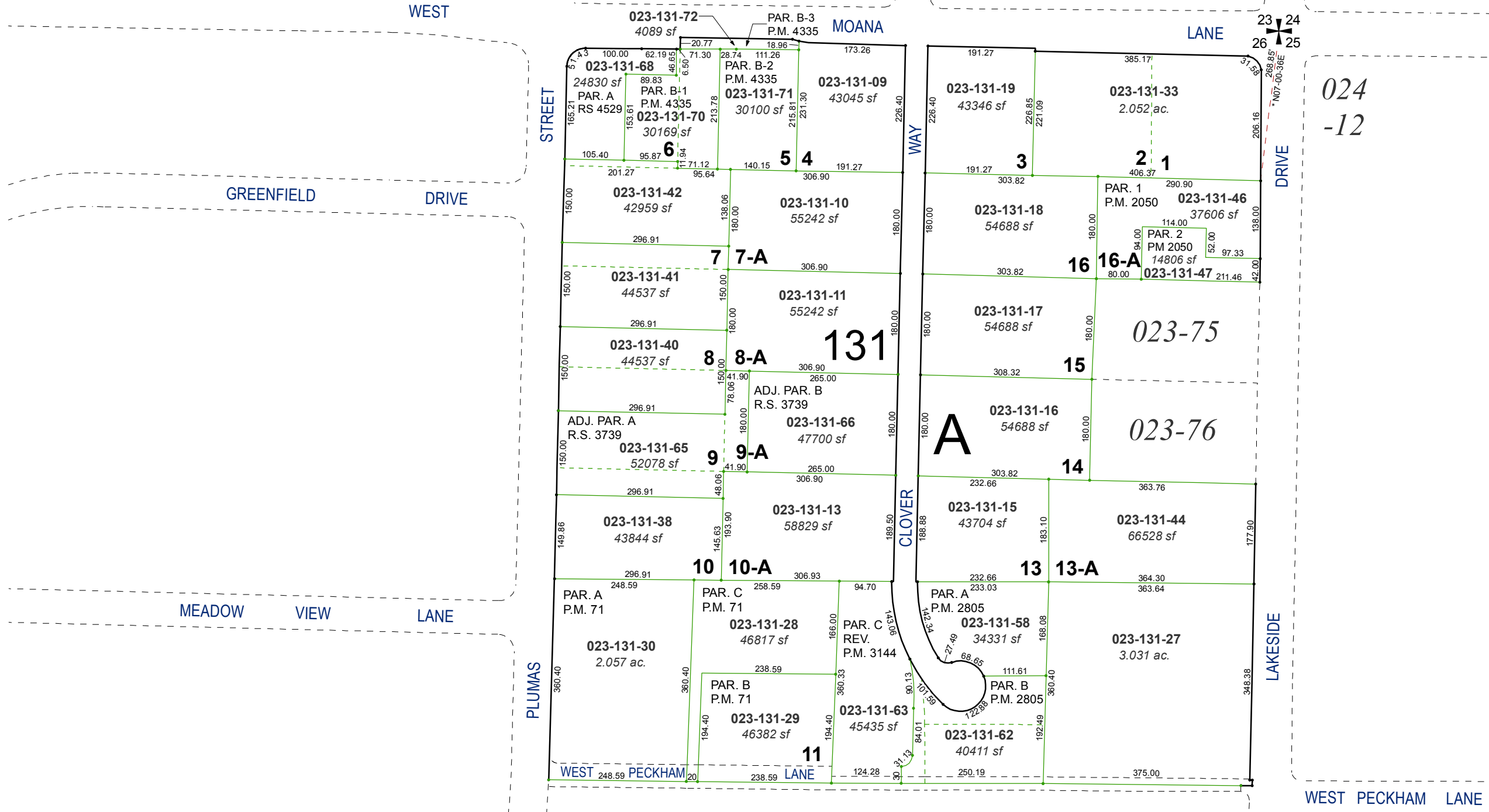


created by: TWT 5/12/2015

last updated: _____

area previously shown on map(s)

NOTE: This map was prepared for the use of the Washoe County Assessor for assessment and illustrative purposes only. It does not represent a survey of the premises. No liability is assumed as to the sufficiency or accuracy of the data delineated hereon.



* NOTE - Per P.M. 2050, item surveyed may or may not be actual section corner