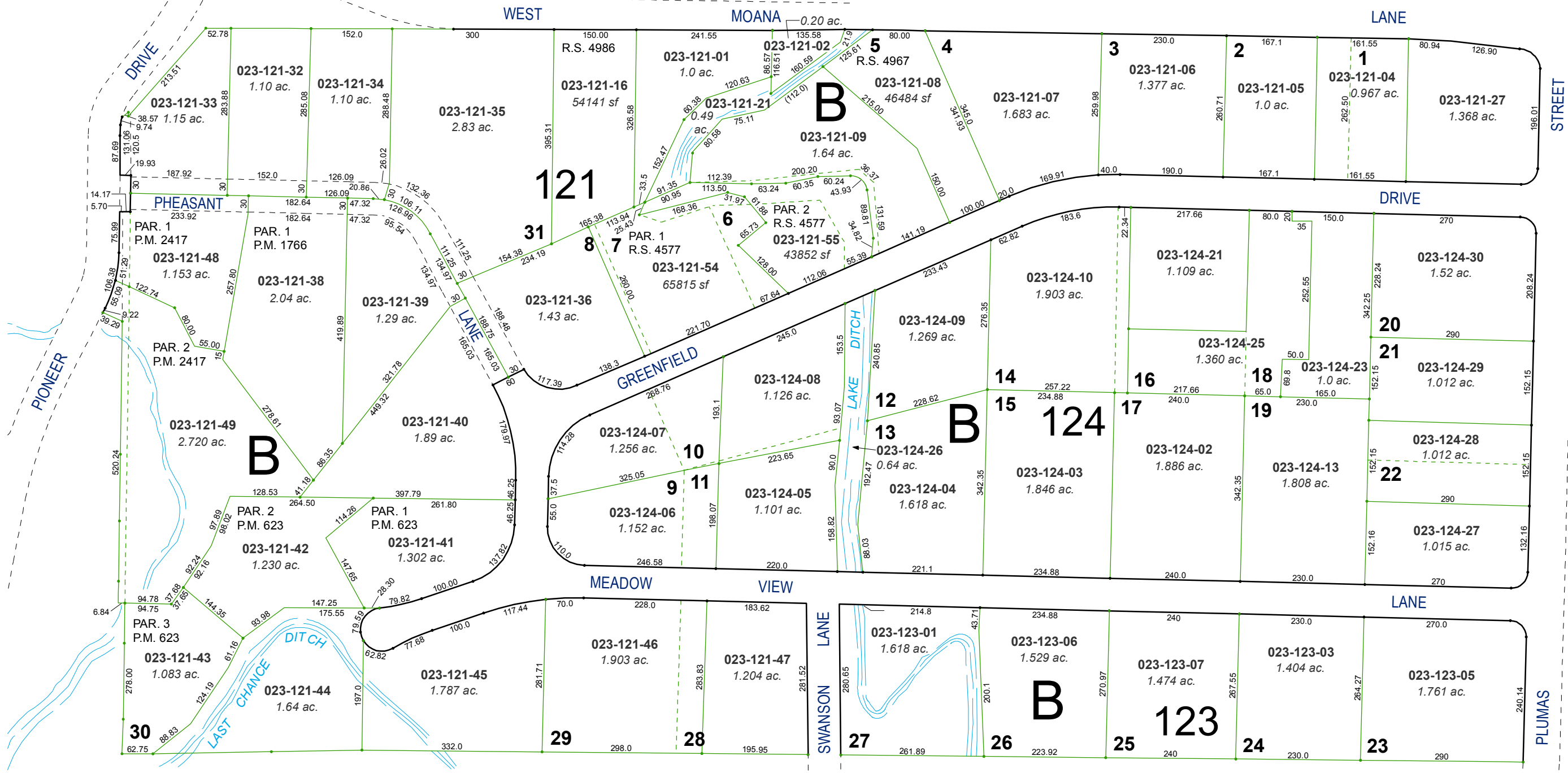


(#254) GREENFIELD SUBDIVISION BLOCK "B"

PORTION OF THE NORTH 1/2 OF SECTION 26
T19N - R19E

ANNEX. T.M. 3656
ORD. #4950

BALFOUR
DRIVE

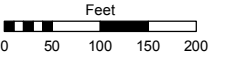


Assessor's Map Number

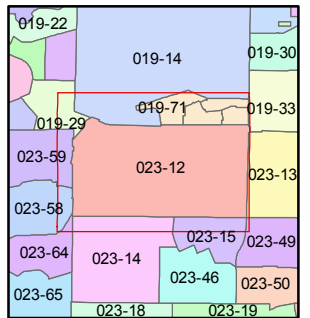
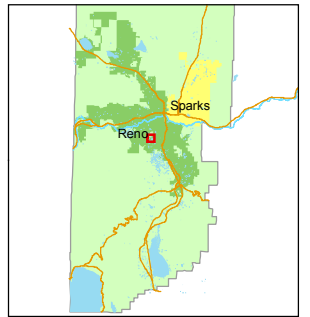
023-12

STATE OF NEVADA
WASHOE COUNTY
ASSESSOR'S OFFICE
Michael E. Clark, Assessor

1001 East Ninth Street
Building D
Reno, Nevada 89512
(775) 328-2231



1 inch = 200 feet



created by: TWT 4/29/2015

last updated: _____

area previously shown on map(s) _____

NOTE: This map was prepared for the use of the Washoe County Assessor for assessment and illustrative purposes only. It does not represent a survey of the premises. No liability is assumed as to the sufficiency or accuracy of the data delineated hereon.