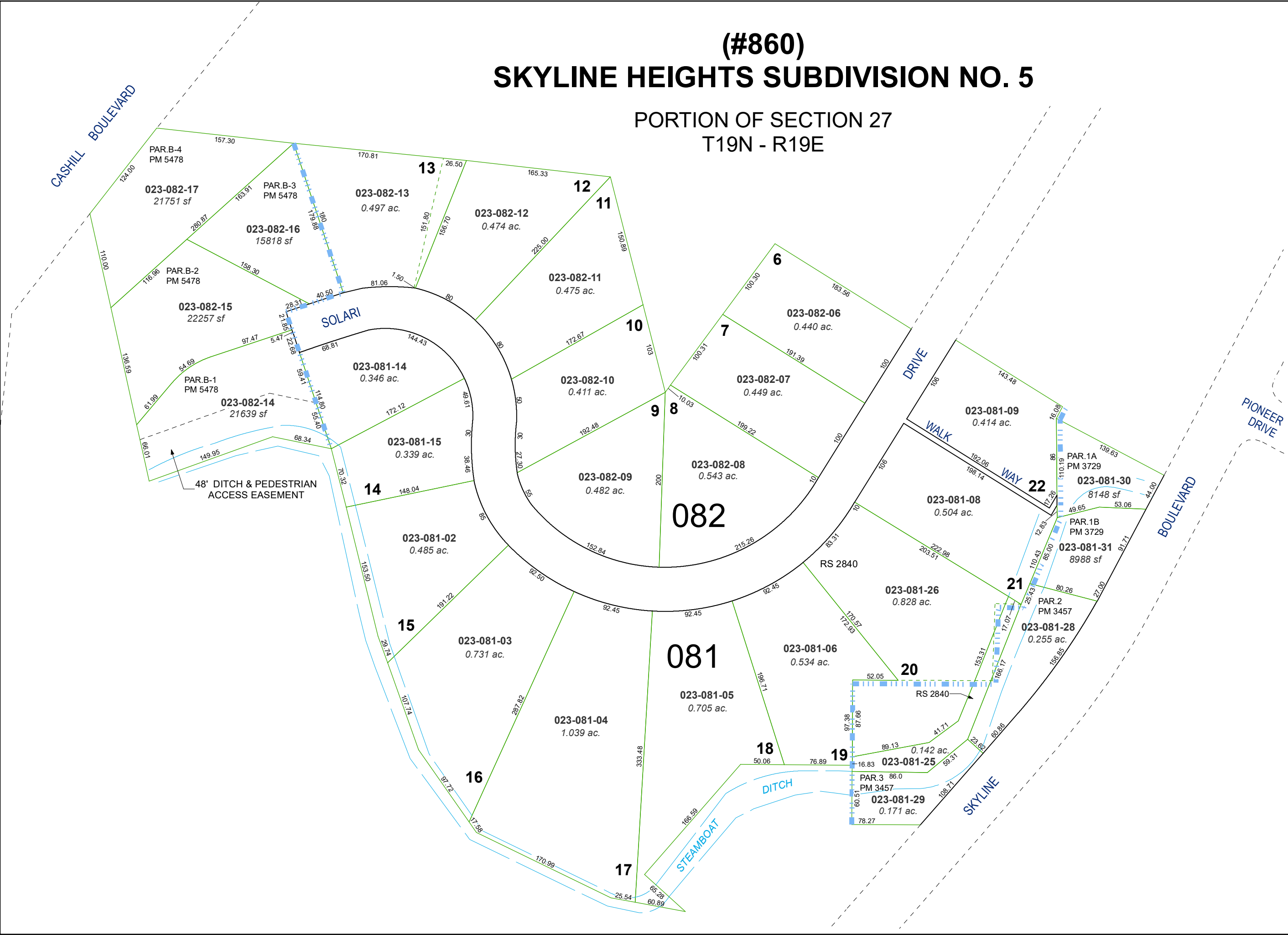


(#860) SKYLINE HEIGHTS SUBDIVISION NO. 5

PORTION OF SECTION 27
T19N - R19E

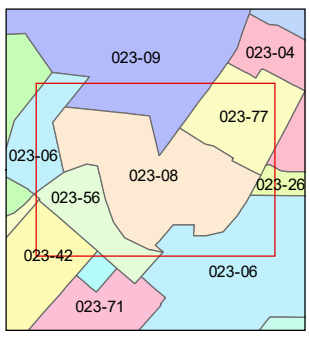
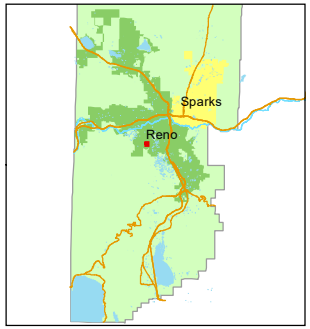
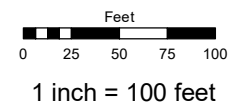
CASHILL BOULEVARD

PIONEER DRIVE



Assessor's Map Number
023-08

STATE OF NEVADA
WASHOE COUNTY
ASSESSOR'S OFFICE
1001 East Ninth Street, Building D
Reno, Nevada 89512
(775) 328-2231



created by: TWT 04/20/2015
updated: SR 08/12/20

area previously shown on map(s):
023-06

NOTE: This map was prepared for the use of the Washoe County Assessor for assessment and illustrative purposes only. It does not represent a survey of the premises. No liability is assumed as to the sufficiency or accuracy of the data delineated hereon.