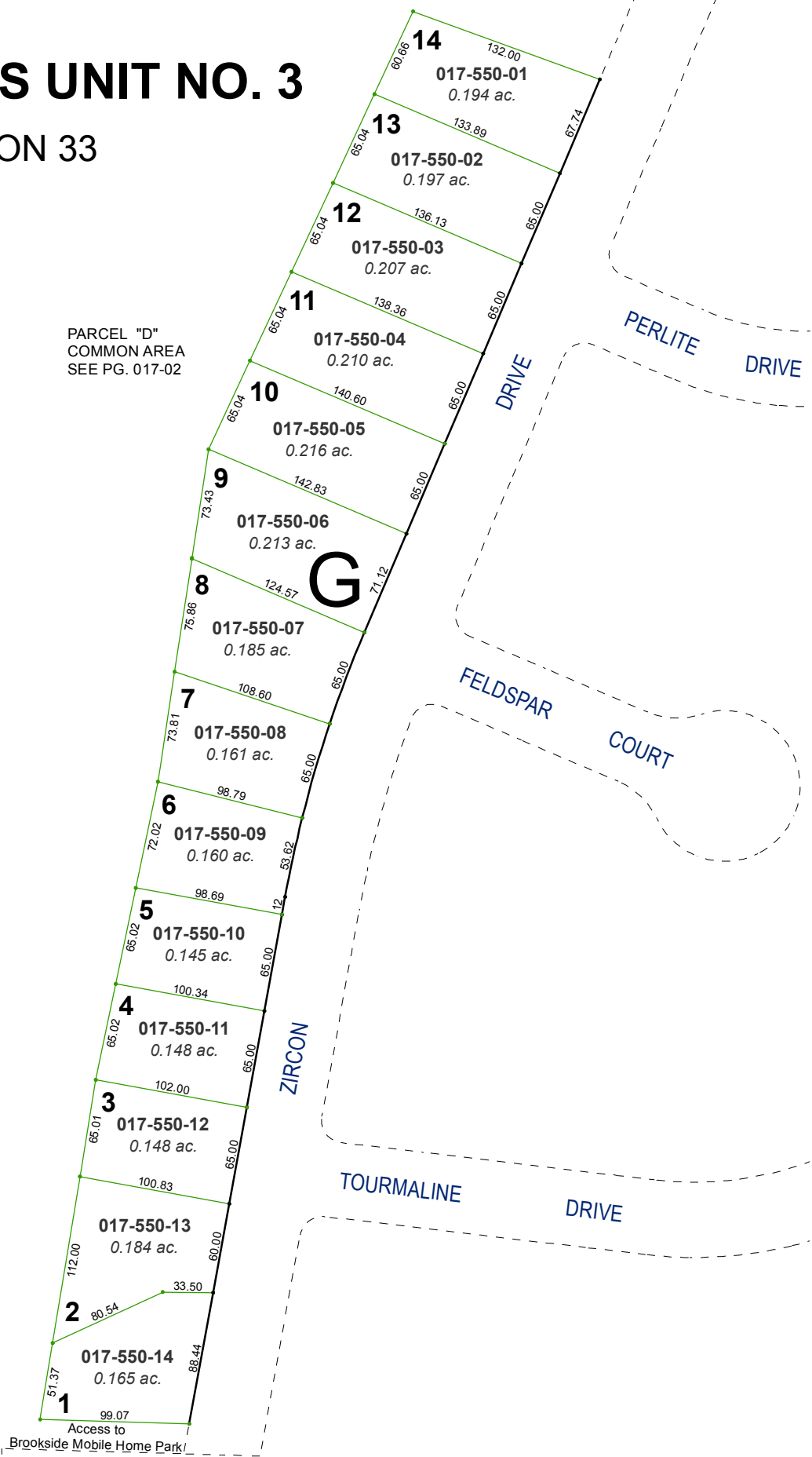


(#1630)
STEAMBOAT SPRINGS ESTATES UNIT NO. 3

PORTION OF THE NE 1/4 OF SECTION 33
 T18N - R20E



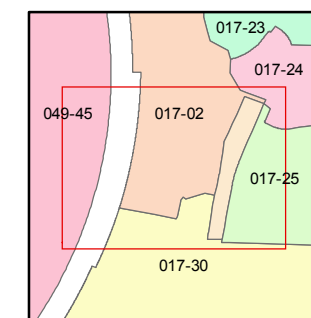
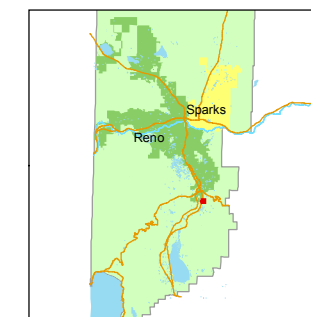
Assessor's Map Number
017-55

STATE OF NEVADA
WASHOE COUNTY
ASSESSOR'S OFFICE
 Joshua G. Wilson, Assessor

1001 East Ninth Street
 Building D
 Reno, Nevada 89512
 (775) 328-2231



1 inch = 100 feet



created by: TWT 5/20/2014

last updated: _____

area previously shown on map(s)

017-25

NOTE: This map was prepared for the use of the Washoe County Assessor for assessment and illustrative purposes only. It does not represent a survey of the premises. No liability is assumed as to the sufficiency or accuracy of the data delineated hereon.