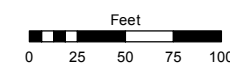
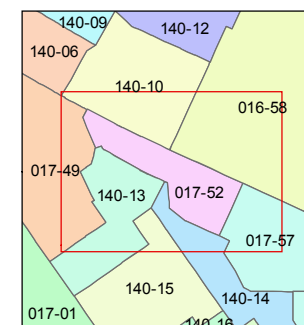
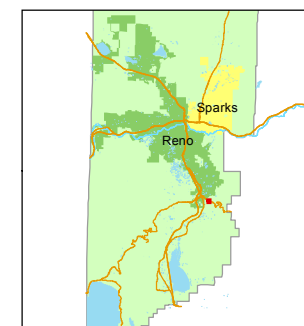


STATE OF NEVADA  
**WASHOE COUNTY**  
**ASSESSOR'S OFFICE**

1001 East Ninth Street, Building D  
Reno, Nevada 89512  
(775) 328-2231



1 inch = 100 feet

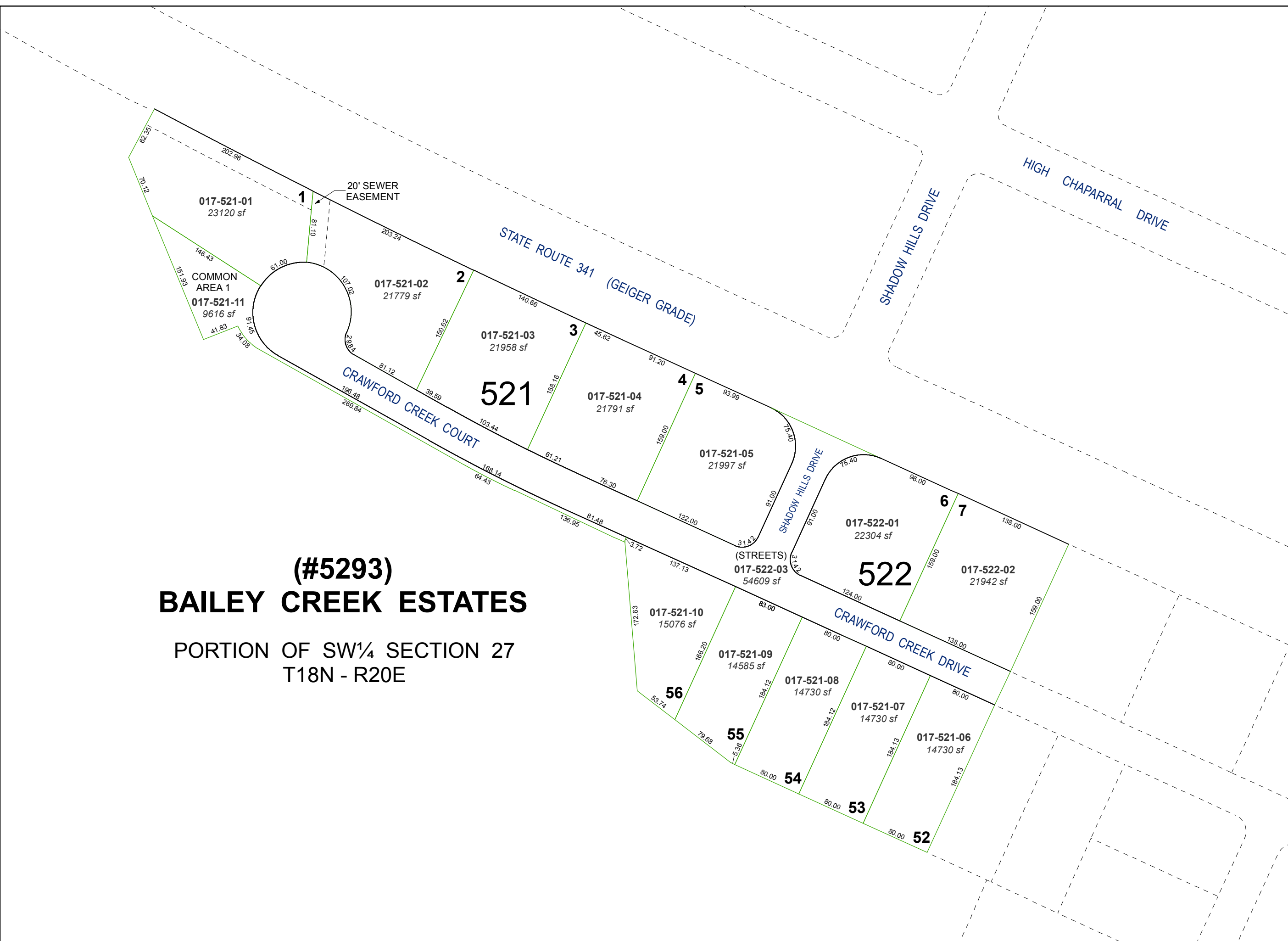


created by: CFB 10/24/2012

updated: KSB 07/01/14 SR 11/15/18

area previously shown on map(s):

NOTE: This map was prepared for the use of the Washoe County Assessor for assessment and illustrative purposes only. It does not represent a survey of the premises. No liability is assumed as to the sufficiency or accuracy of the data delineated hereon.



**(#5293)**  
**BAILEY CREEK ESTATES**

PORTION OF SW¼ SECTION 27  
T18N - R20E