

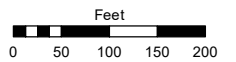
# (#4914) MAJESTIC RANCH ESTATES II-B

Assessor's Map Number

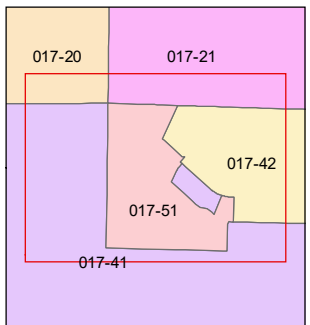
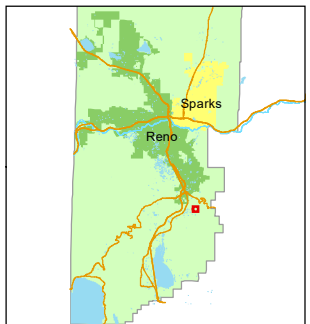
**017-51**

STATE OF NEVADA  
**WASHOE COUNTY**  
ASSESSOR'S OFFICE

1001 East Ninth Street, Building D  
Reno, Nevada 89512  
(775) 328-2231



1 inch = 200 feet



created by: CFB 04/23/2009

updated: KSB 7/1/13 EMG 4/3/15

JKF 5/16/19 JKF 9/21/20 JRA 7/2/21

area previously shown on map(s):

NOTE: This map was prepared for the use of the Washoe County Assessor for assessment and illustrative purposes only. It does not represent a survey of the premises. No liability is assumed as to the sufficiency or accuracy of the data delineated hereon.

# (#5036) MAJESTIC RANCH ESTATES II-C

# (#5116) MAJESTIC RANCH ESTATES II-D

