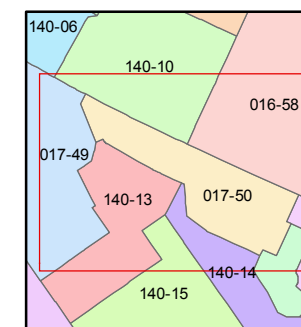
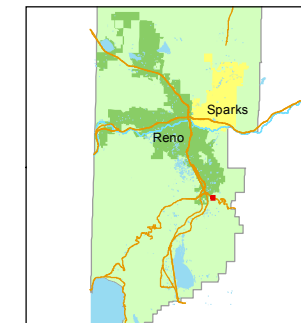


1 inch = 100 feet



created by: CFB 10/24/2012

last updated: CFB 10/24/2012

area previously shown on map(s)

NOTE: This map was prepared for the use of the Washoe County Assessor for assessment and illustrative purposes only. It does not represent a survey of the premises. No liability is assumed as to the sufficiency or accuracy of the data delineated hereon.

17-49

COMMON AREA D

017-502-06
41391 sf

718

017-502-05
19974 sf

717

017-502-04
13167 sf

140-10

STATE ROUTE 341

RETIRED

NOTE: This map has no active parcels and has been retired as of 7/01/2014. This area is now shown on Assessor map 017-52.

16-58

017-502-15
50563 sf

017-502-03
13647 sf

716

017-502-02
21911 sf

715

714

017-502-01
21764 sf

140-13

TRIUMPH COURT

SHADOW HILLS DRIVE

017-501-03
21278 sf

713

017-501-02
21784 sf

712

711

501

017-501-01
21784 sf

017-52

017-502-08
11515 sf

719

017-502-09
13007 sf

720

017-502-10
14563 sf

721

017-502-11
14725 sf

722

017-502-12
14725 sf

723

017-502-13
14684 sf

724

017-502-14
12033 sf

725

017-502-15
50563 sf

017-53

COMMON AREA E

017-502-07
2786 sf

140-14

**(#4588)
COTTONWOOD CREEK ESTATES
UNIT NO. 7**

A COMMON INTEREST COMMUNITY
PORTION SW 1/4 SEC. 27, T18N - R20E