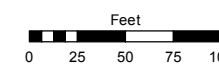


Assessor's Map Number

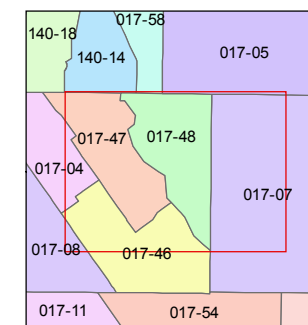
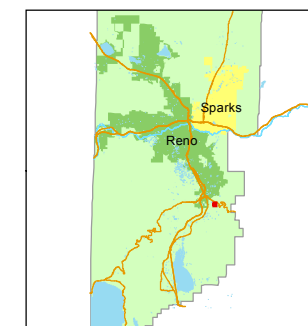
017-48

STATE OF NEVADA
WASHOE COUNTY
ASSESSOR'S OFFICE

1001 East Ninth Street, Building D
Reno, Nevada 89512
(775) 328-2231



1 inch = 100 feet



created by: TWT 05/14/2014

updated: SR 11/16/18

area previously shown on map(s):

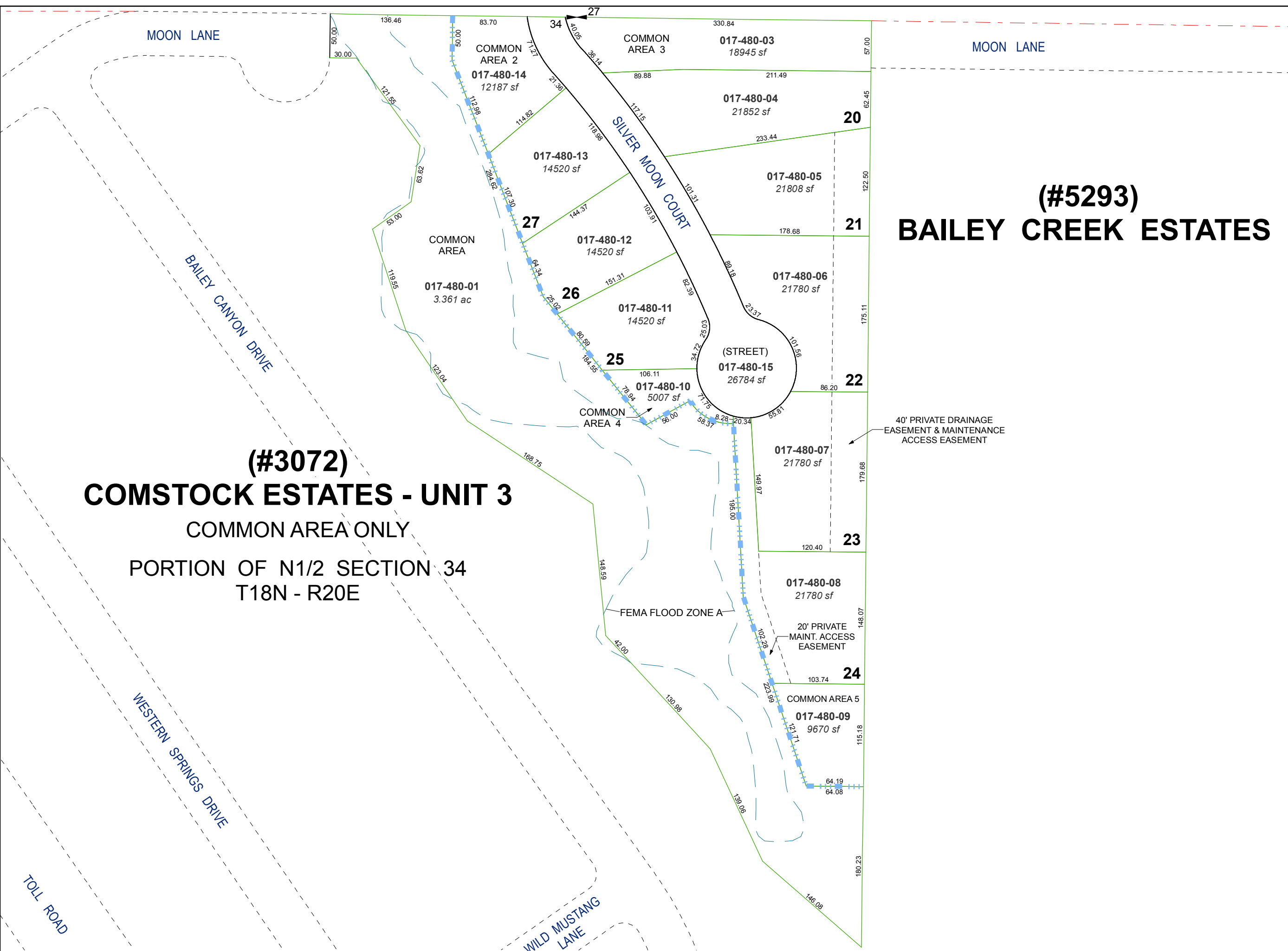
NOTE: This map was prepared for the use of the Washoe County Assessor for assessment and illustrative purposes only. It does not represent a survey of the premises. No liability is assumed as to the sufficiency or accuracy of the data delineated hereon.

(#5293) BAILEY CREEK ESTATES

(#3072) COMSTOCK ESTATES - UNIT 3

COMMON AREA ONLY

PORTION OF N1/2 SECTION 34
T18N - R20E



40' PRIVATE DRAINAGE
EASEMENT & MAINTENANCE
ACCESS EASEMENT

20' PRIVATE
MAINT. ACCESS
EASEMENT

FEMA FLOOD ZONE A