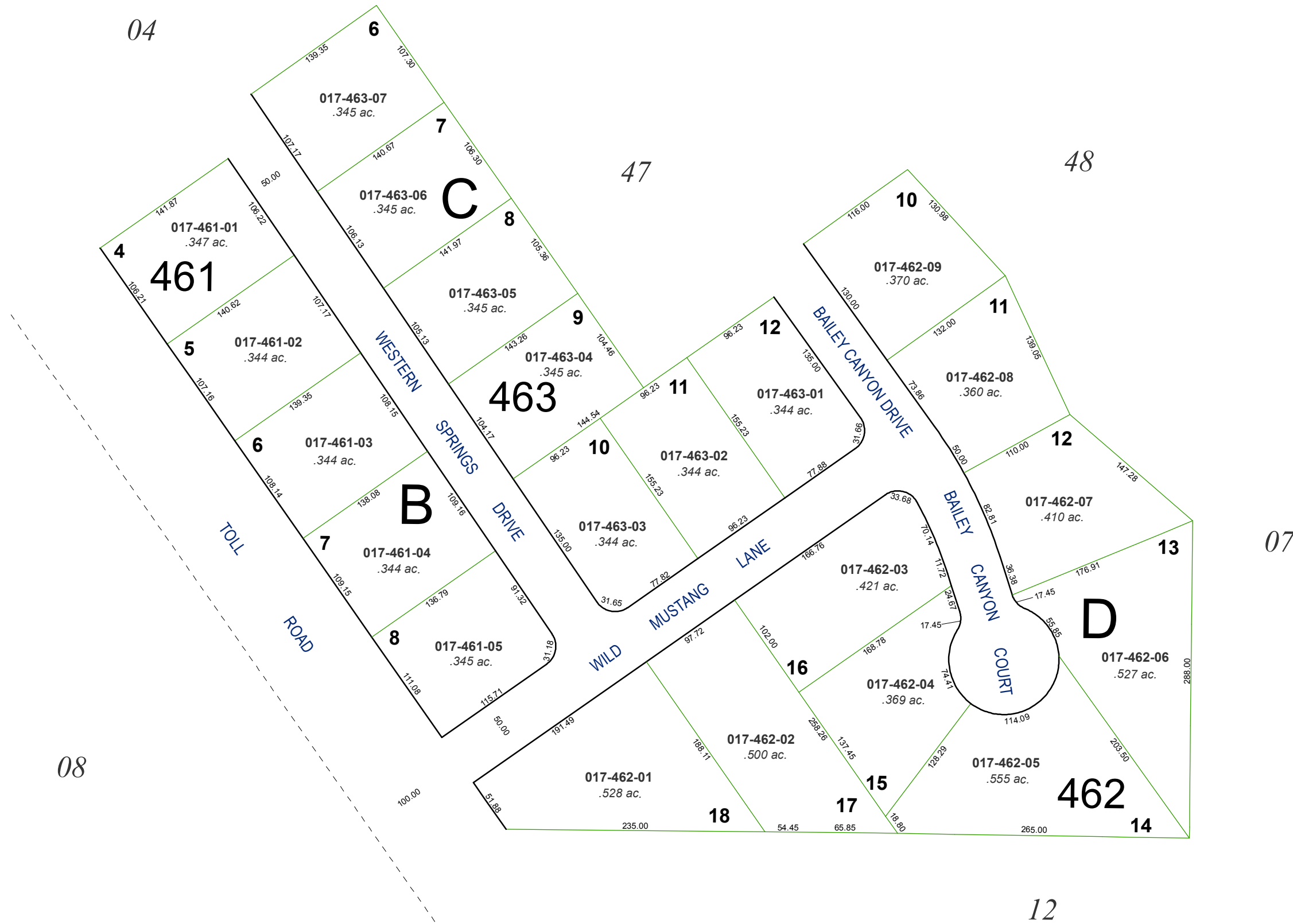


# COMSTOCK ESTATES - UNIT 2 (#3017)

PORTION NW¼ & NE¼ SECTION 34, T18N - R20E

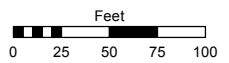


Assessor's Map Number

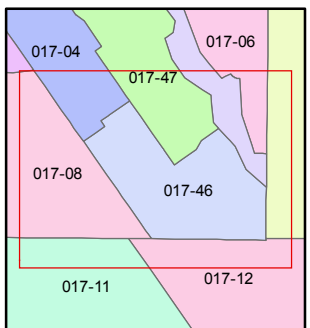
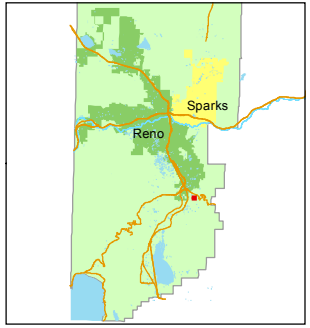
**017-46**

STATE OF NEVADA  
**WASHOE COUNTY**  
**ASSESSOR'S OFFICE**  
 Joshua G. Wilson, Assessor

1001 East Ninth Street  
 Building D  
 Reno, Nevada 89512  
 (775) 328-2231



1 inch = 100 feet



created by: CFB 10/23/2012

last updated: CFB 10/23/2012

area previously shown on map(s)

NOTE: This map was prepared for the use of the Washoe County Assessor for assessment and illustrative purposes only. It does not represent a survey of the premises. No liability is assumed as to the sufficiency or accuracy of the data delineated hereon.