

(#3001) MEADOWGATE ESTATES SUBDIVISION UNIT NO. 3

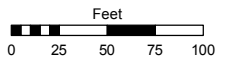
PORTION OF THE NW 1/4 OF SECTION 34
T18N - R20E

Assessor's Map Number

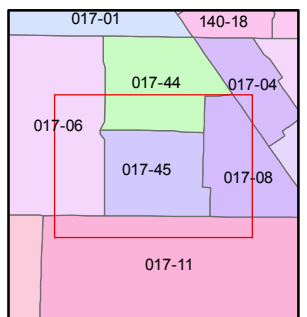
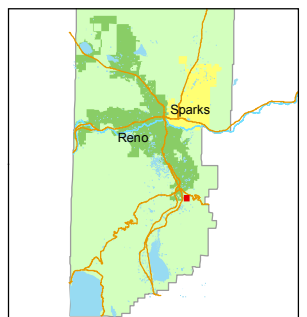
017-45

STATE OF NEVADA
WASHOE COUNTY
ASSESSOR'S OFFICE
Joshua G. Wilson, Assessor

1001 East Ninth Street
Building D
Reno, Nevada 89512
(775) 328-2231



1 inch = 100 feet



created by: TWT 7/11/2014

last updated: _____

area previously shown on map(s)

017-06

NOTE: This map was prepared for the use of the Washoe County Assessor for assessment and illustrative purposes only. It does not represent a survey of the premises. No liability is assumed as to the sufficiency or accuracy of the data delineated hereon.

