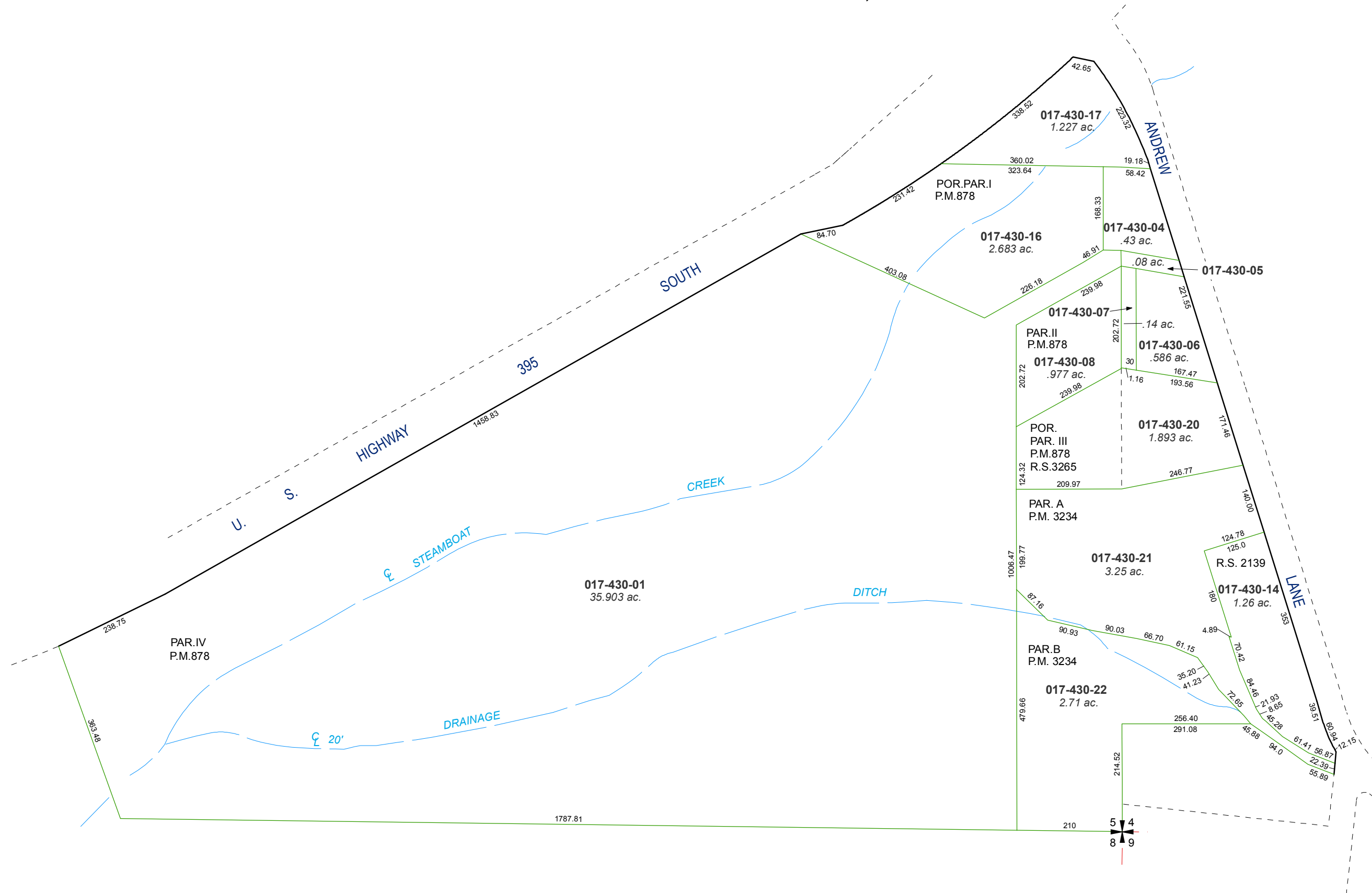


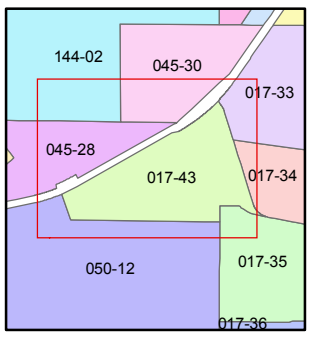
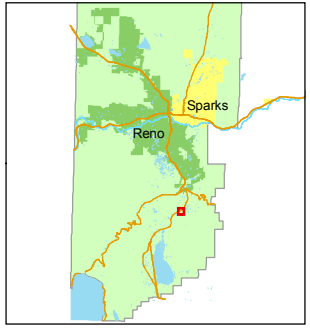
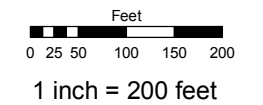
PORTION OF SW 1/4 SECTION 4, T17N - R20E
 PORTION OF SE 1/4 SECTION 5, T17N - R20E



Assessor's Map Number
017-43

STATE OF NEVADA
WASHOE COUNTY
ASSESSOR'S OFFICE
 Joshua G. Wilson, Assessor

1001 East Ninth Street
 Building D
 Reno, Nevada 89512
 (775) 328-2231



created by: CFB 01/03/2011
 last updated: _____
 area previously shown on map(s) _____

NOTE: This map was prepared for the use of the Washoe County Assessor for assessment and illustrative purposes only. It does not represent a survey of the premises. No liability is assumed as to the sufficiency or accuracy of the data delineated hereon.