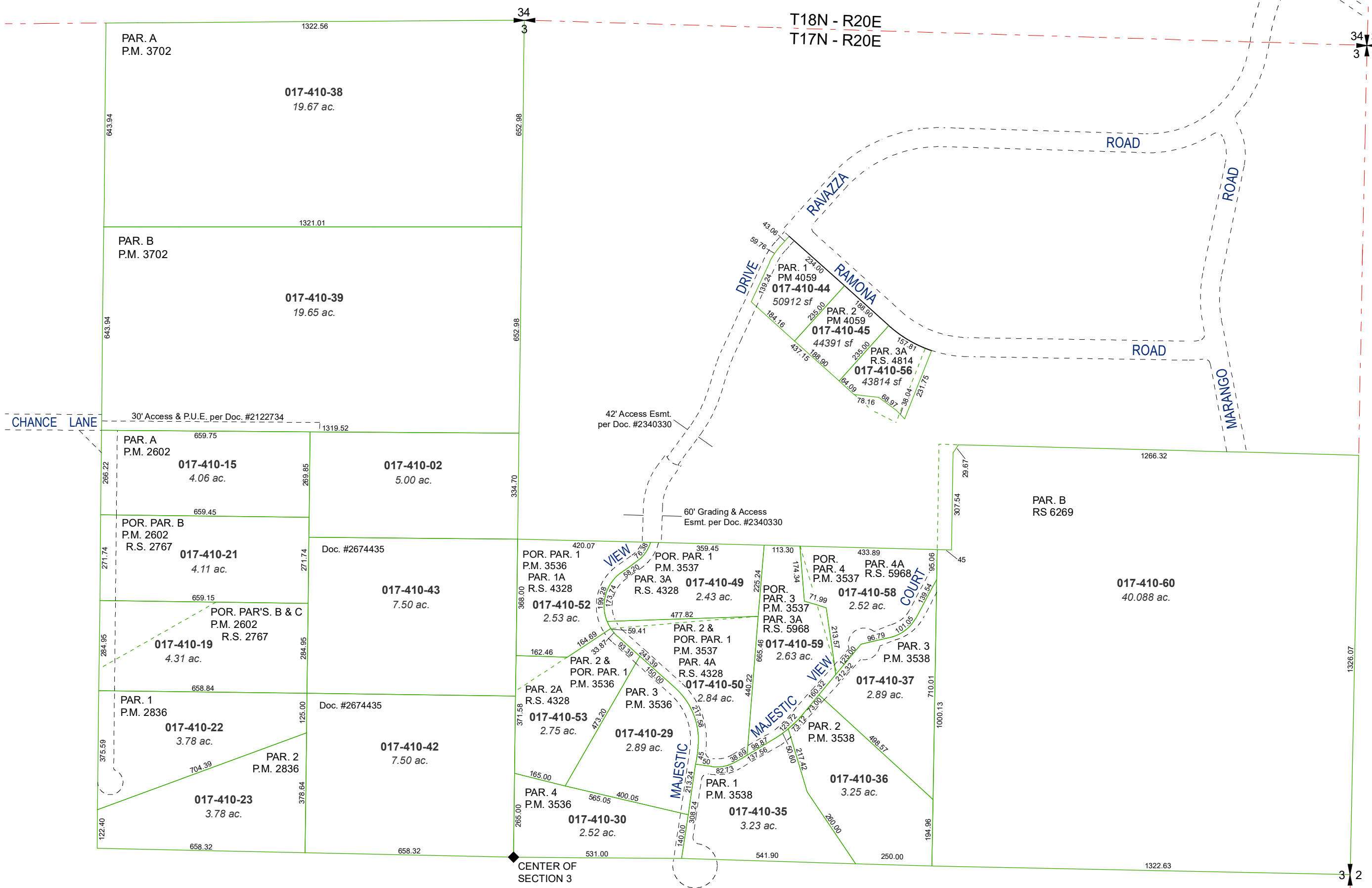
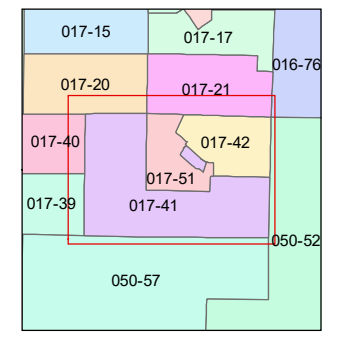
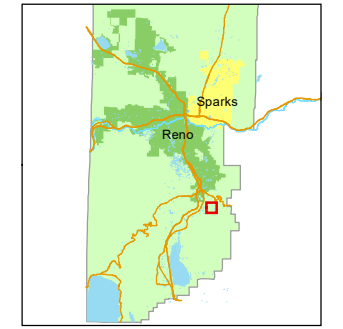
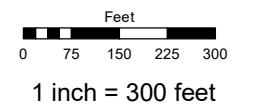


PORTION OF THE NORTH 1/2 OF SECTION 3 T17N - R20E



Assessor's Map Number
017-41

STATE OF NEVADA
WASHOE COUNTY
ASSESSOR'S OFFICE
1001 East Ninth Street, Building D
Reno, Nevada 89512
(775) 328-2231



created by: TWT 7/10/2014
 updated: JKF 6/19/18 JKF 10/5/18
JRA 7/2/21
 area previously shown on map(s): _____

NOTE: This map was prepared for the use of the Washoe County Assessor for assessment and illustrative purposes only. It does not represent a survey of the premises. No liability is assumed as to the sufficiency or accuracy of the data delineated hereon.