

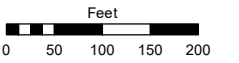
THE NW 1/4 OF THE NW 1/4 OF SECTION 3 &  
A PORTION OF THE NE 1/4 OF THE NE 1/4 OF SECTION 4  
T17N - R20E

Assessor's Map Number

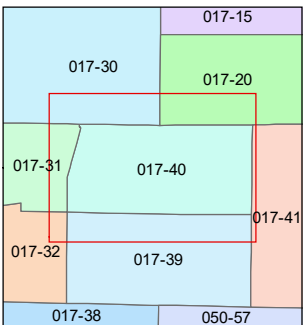
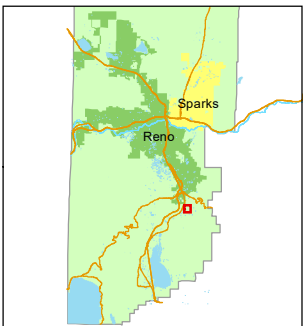
**017-40**

STATE OF NEVADA  
**WASHOE COUNTY**  
ASSESSOR'S OFFICE

1001 East Ninth Street, Building D  
Reno, Nevada 89512  
(775) 328-2231



1 inch = 200 feet



created by: TWT 7/9/2014

updated: JKF 5/13/21

area previously shown on map(s):

NOTE: This map was prepared for the use of the Washoe County Assessor for assessment and illustrative purposes only. It does not represent a survey of the premises. No liability is assumed as to the sufficiency or accuracy of the data delineated hereon.

