

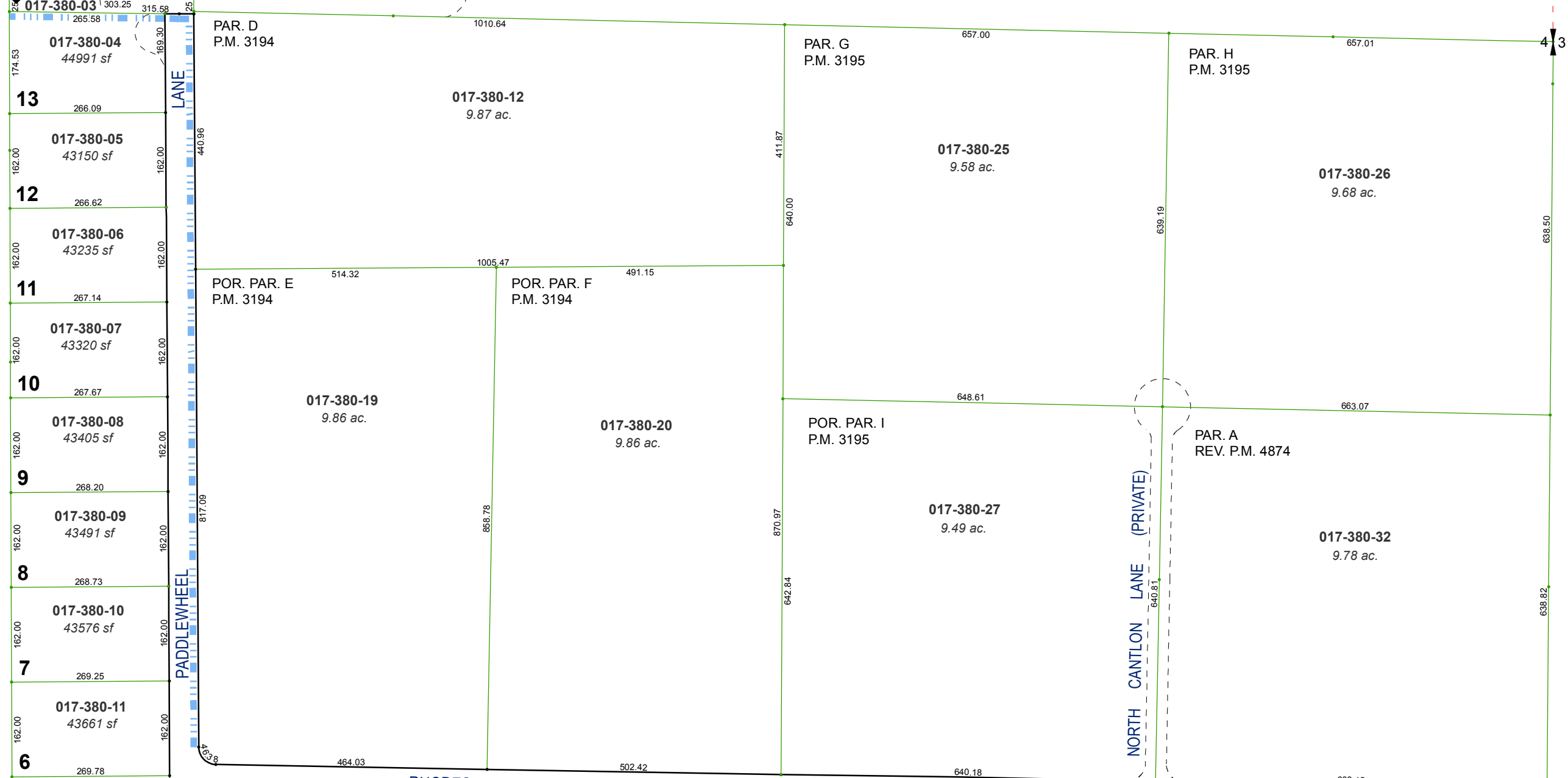
(#815) CUTLER SUBDIVISION

NORTH 1/2 OF THE SOUTHEAST 1/4 OF SECTION 4
T17N - R20E

CENTER OF
SEC. 4

12.25

7889 sf ANNIE LANE (PRIVATE)

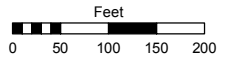


Assessor's Map Number

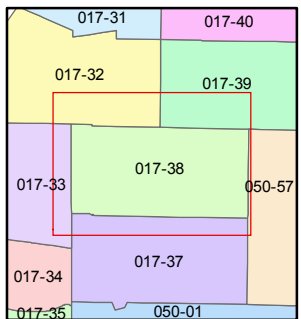
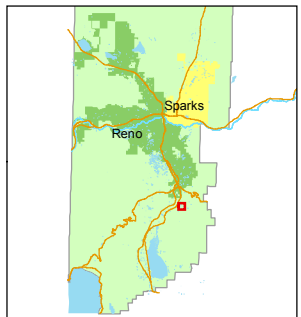
017-38

STATE OF NEVADA
WASHOE COUNTY
ASSESSOR'S OFFICE
Joshua G. Wilson, Assessor

1001 East Ninth Street
Building D
Reno, Nevada 89512
(775) 328-2231



1 inch = 200 feet



created by: TWT 6/27/2014

last updated: _____

area previously shown on map(s)

NOTE: This map was prepared for the use of the Washoe County Assessor for assessment and illustrative purposes only. It does not represent a survey of the premises. No liability is assumed as to the sufficiency or accuracy of the data delineated hereon.