

# (#815) CUTLER SUBDIVISION

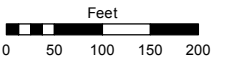
## MAP OF DIVISION INTO LARGE PARCELS # 158

Assessor's Map Number

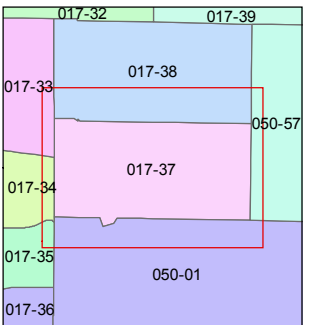
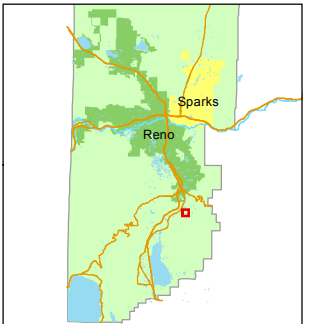
**017-37**

STATE OF NEVADA  
**WASHOE COUNTY**  
ASSESSOR'S OFFICE

1001 East Ninth Street, Building D  
Reno, Nevada 89512  
(775) 328-2231



1 inch = 200 feet

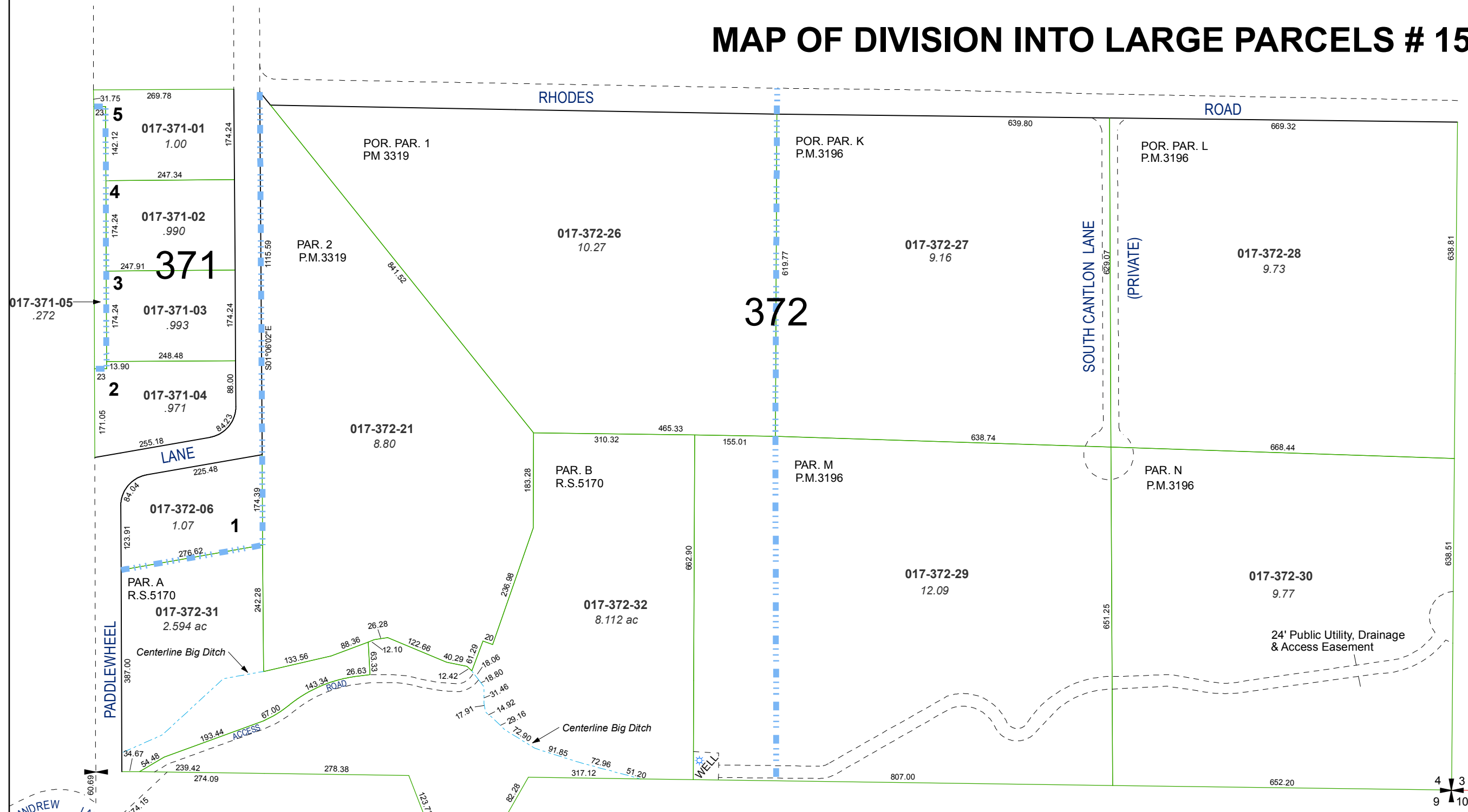


created by: CFB 07/08/2009

updated: \_\_\_\_\_

area previously shown on map(s): \_\_\_\_\_

NOTE: This map was prepared for the use of the Washoe County Assessor for assessment and illustrative purposes only. It does not represent a survey of the premises. No liability is assumed as to the sufficiency or accuracy of the data delineated hereon.



THE S ½ OF THE SE ¼ SECTION 4  
& PORTION OF THE NE ¼ SECTION 9  
T17N – R20E

