

U. S. 395  
OLD

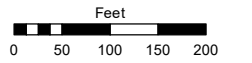
# PORTIONS OF THE SW 1/4 OF SECTION 4 & THE NW 1/4 OF SECTION 9 T17N - R20E

Assessor's Map Number

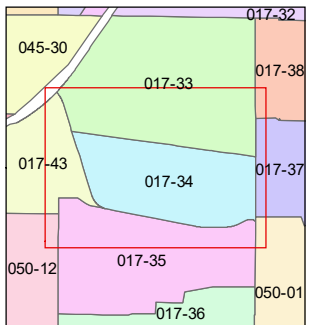
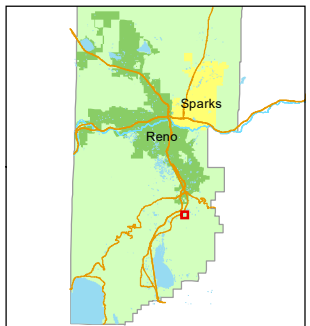
## 017-34

STATE OF NEVADA  
**WASHOE COUNTY**  
ASSESSOR'S OFFICE

1001 East Ninth Street, Building D  
Reno, Nevada 89512  
(775) 328-2231



1 inch = 200 feet



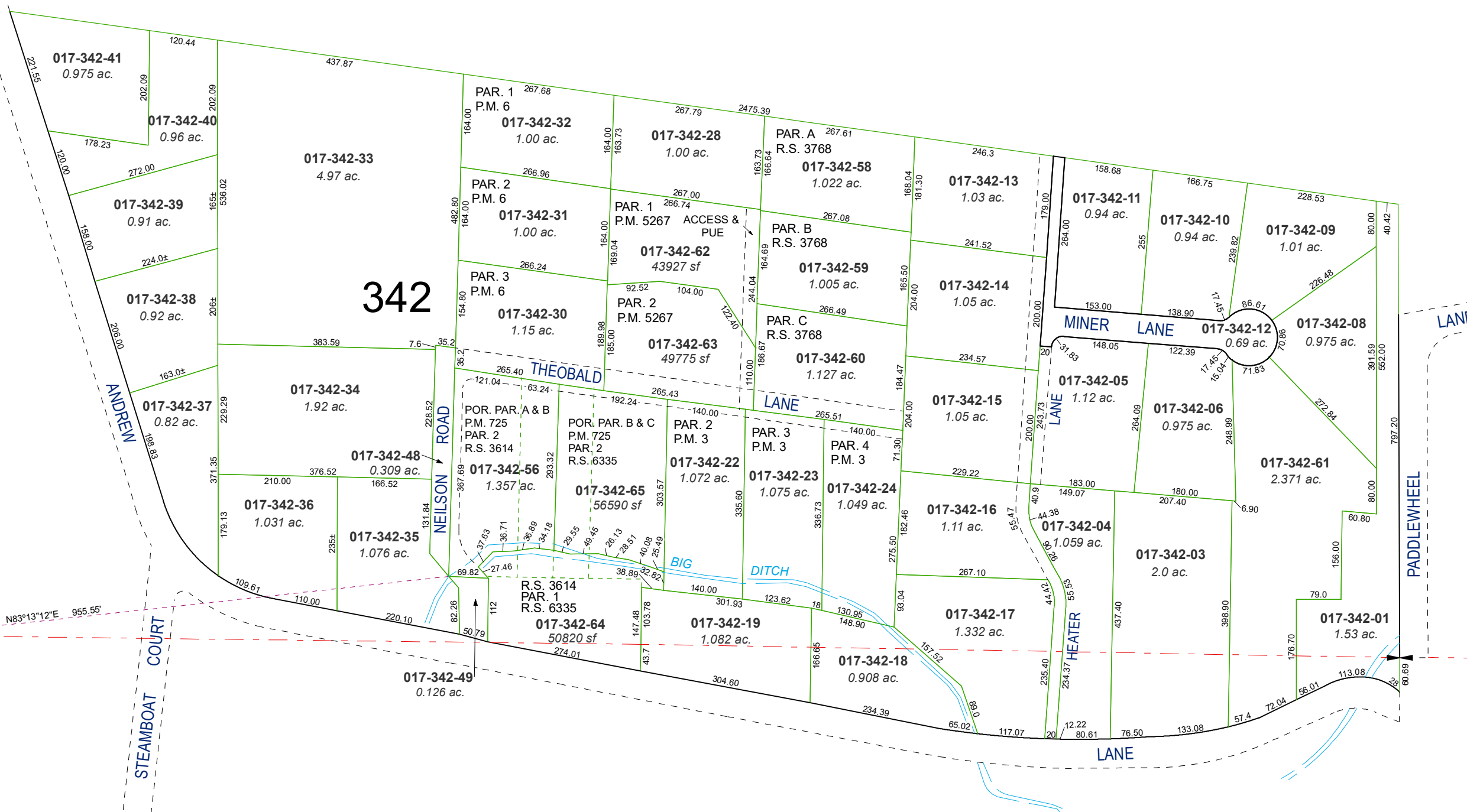
created by: TWT 6/26/2014

updated: JMO 12/16/16 JMO 5/3/17

JKF 2/22/22

area previously shown on map(s):

NOTE: This map was prepared for the use of the Washoe County Assessor for assessment and illustrative purposes only. It does not represent a survey of the premises. No liability is assumed as to the sufficiency or accuracy of the data delineated hereon.



# 342

5 4  
8 9

N83°13'12"E 955.55'

STEAMBOAT COURT

THEOBALD LANE

MINER LANE

LANE

BIG DITCH

HEATER LANE

PADDLEWHEEL LANE

ANDREW LANE

NEILSON ROAD