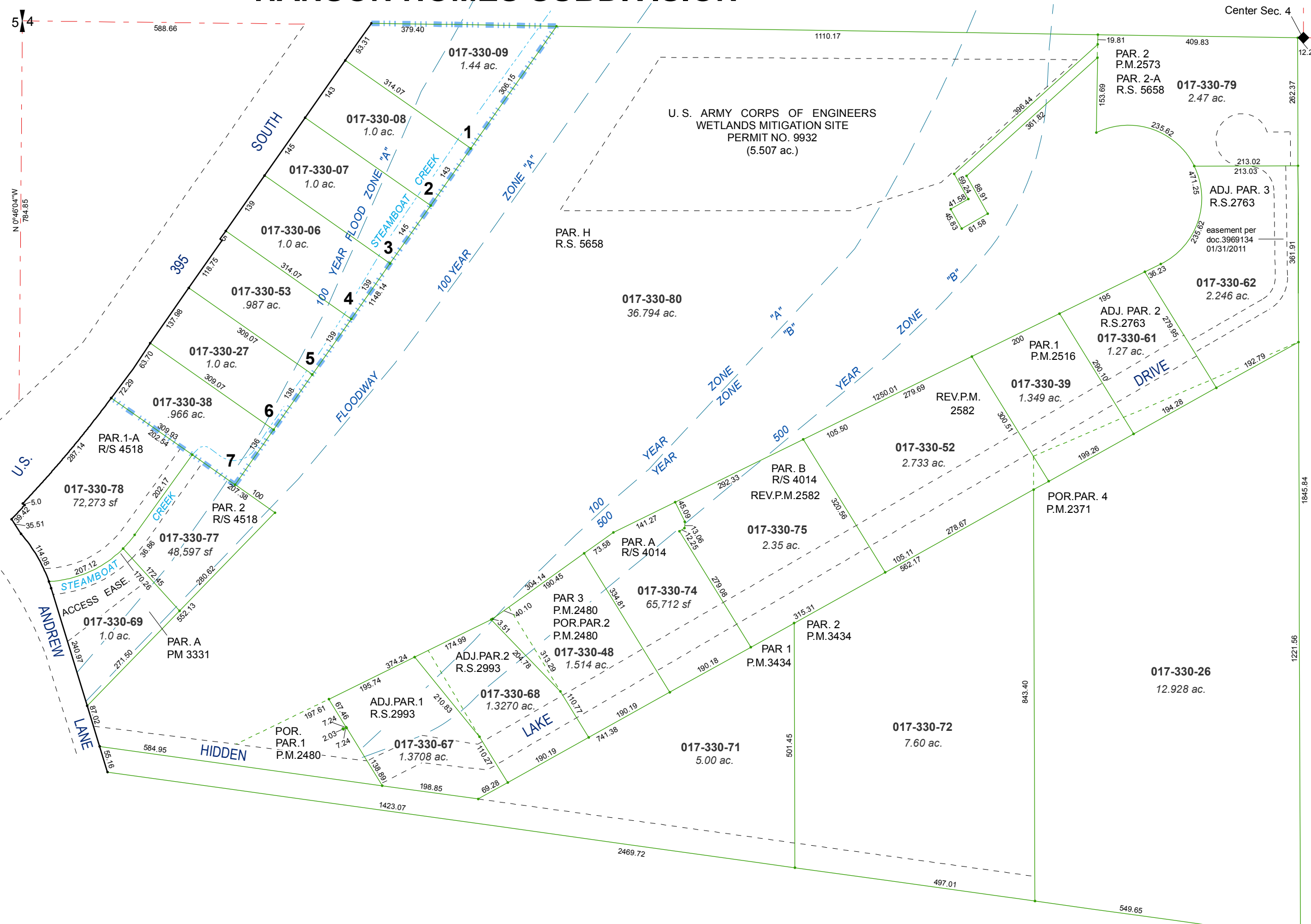


# (#1477) HANSON HOMES SUBDIVISION

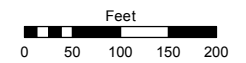
POR. N 1/2, SW 1/4 SEC. 4, T17N - R20E



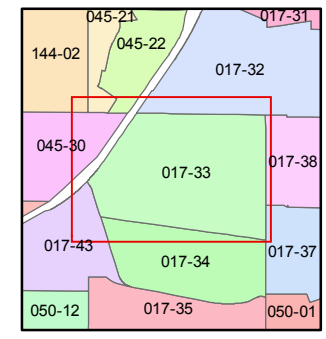
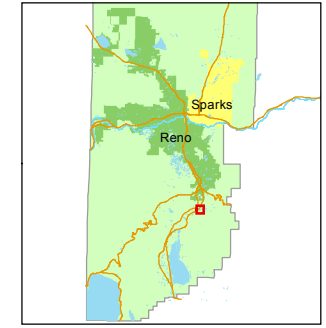
Assessor's Map Number  
**017-33**

STATE OF NEVADA  
**WASHOE COUNTY**  
**ASSESSOR'S OFFICE**  
Michael E. Clark, Assessor

1001 East Ninth Street  
Building D  
Reno, Nevada 89512  
(775) 328-2231



1 inch = 200 feet



created by: CFB 06/07/2011  
last updated: EMG 9/2/15  
area previously shown on map(s)

NOTE: This map was prepared for the use of the Washoe County Assessor for assessment and illustrative purposes only. It does not represent a survey of the premises. No liability is assumed as to the sufficiency or accuracy of the data delineated hereon.