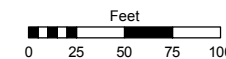


Assessor's Map Number

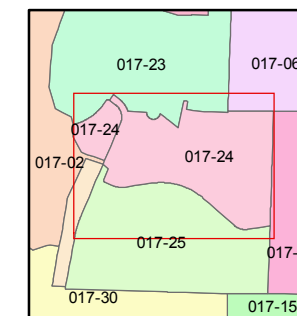
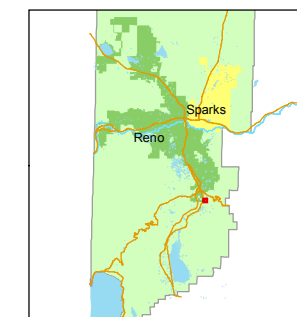
017-24

STATE OF NEVADA
WASHOE COUNTY
ASSESSOR'S OFFICE
Joshua G. Wilson, Assessor

1001 East Ninth Street
Building D
Reno, Nevada 89512
(775) 328-2231



1 inch = 100 feet

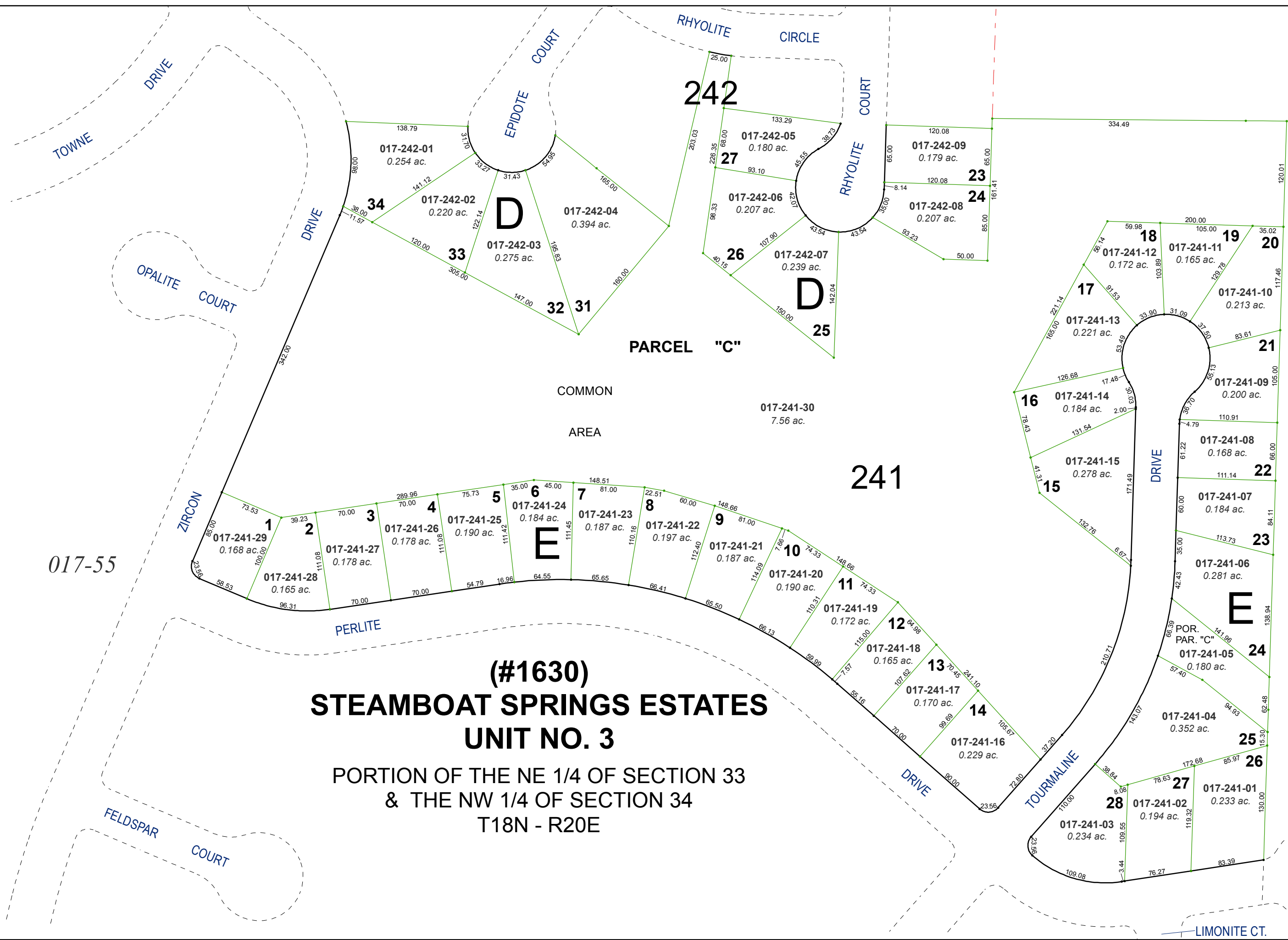


created by: TWT 6/2/2014

last updated: _____

area previously shown on map(s) _____

NOTE: This map was prepared for the use of the Washoe County Assessor for assessment and illustrative purposes only. It does not represent a survey of the premises. No liability is assumed as to the sufficiency or accuracy of the data delineated hereon.



(#1630)
STEAMBOAT SPRINGS ESTATES
UNIT NO. 3

PORTION OF THE NE 1/4 OF SECTION 33
& THE NW 1/4 OF SECTION 34
T18N - R20E

PARCEL "C"

COMMON
AREA

D

D

E

E

E

LIMONITE CT.

017-55

TOWNE DRIVE

OPALITE COURT

ZIRCON

PERLITE

FELDSPAR COURT

RHYOLITE CIRCLE

EPIDOTE COURT

RHYOLITE COURT

TOURMALINE DRIVE

DRIVE

LIMONITE CT.