

# STEAMBOAT SPRINGS ESTATES

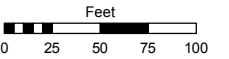
PORTION OF THE NE 1/4 OF SECTION 33  
T18N - R20E

Assessor's Map Number

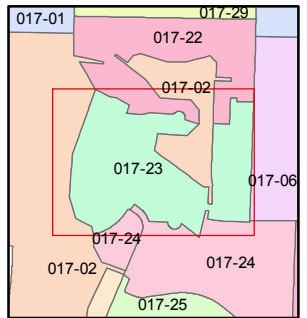
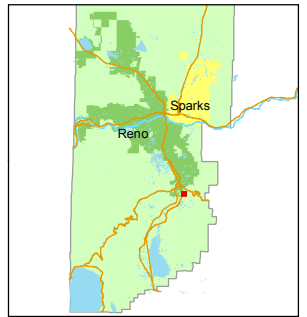
**017-23**

STATE OF NEVADA  
**WASHOE COUNTY**  
ASSESSOR'S OFFICE  
Joshua G. Wilson, Assessor

1001 East Ninth Street  
Building D  
Reno, Nevada 89512  
(775) 328-2231



1 inch = 100 feet



created by: TWT 5/29/2014

last updated: \_\_\_\_\_

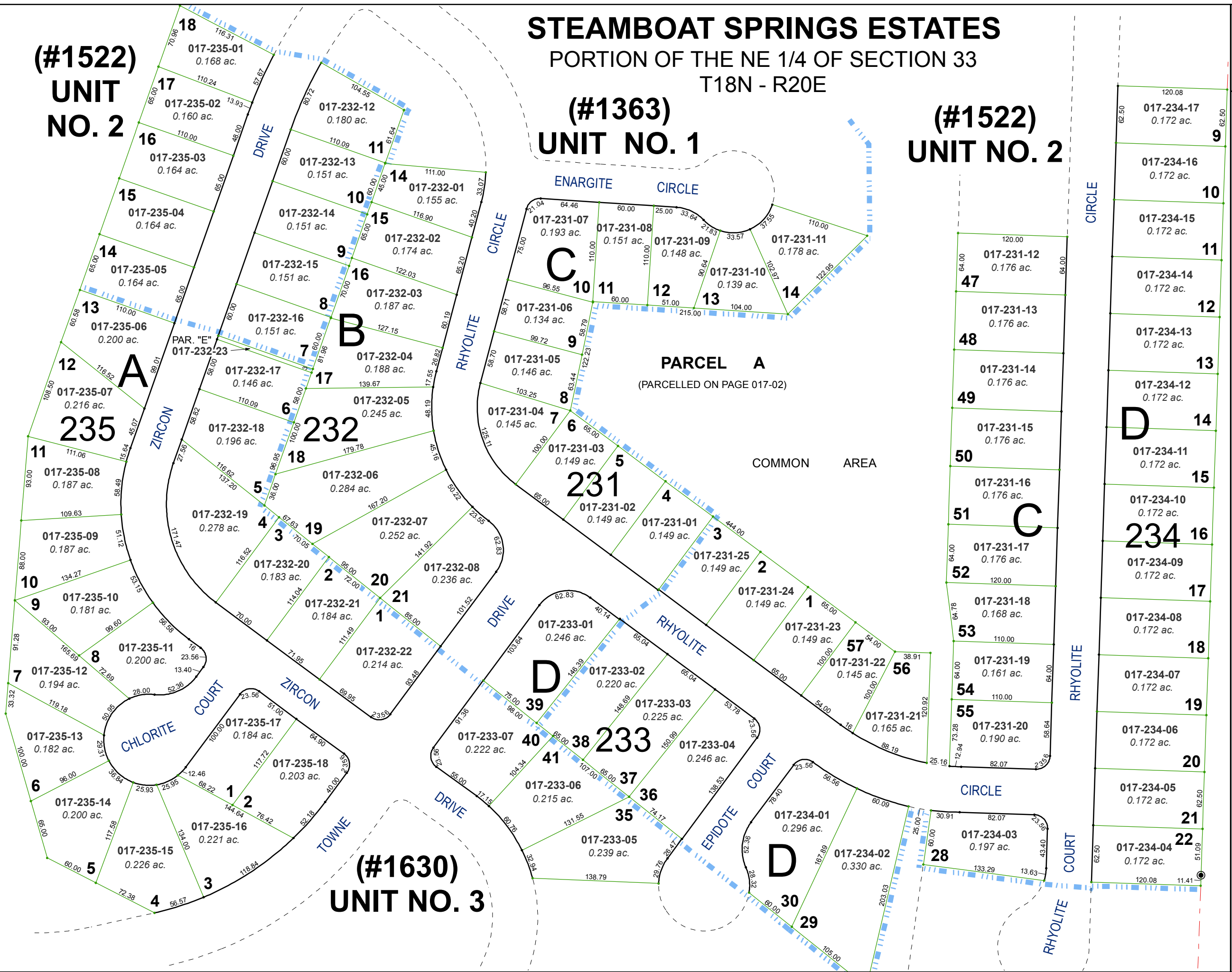
area previously shown on map(s) \_\_\_\_\_

NOTE: This map was prepared for the use of the Washoe County Assessor for assessment and illustrative purposes only. It does not represent a survey of the premises. No liability is assumed as to the sufficiency or accuracy of the data delineated hereon.

**(#1522)  
UNIT  
NO. 2**

**(#1363)  
UNIT NO. 1**

**(#1522)  
UNIT NO. 2**



**(#1630)  
UNIT NO. 3**