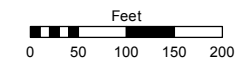


PORTION OF THE SOUTHEAST 1/4 OF SECTION 34 T18N - R20E

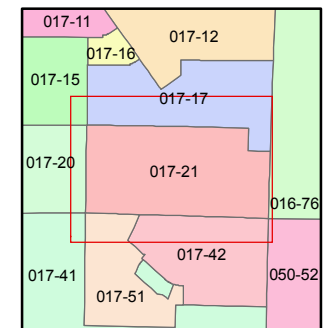
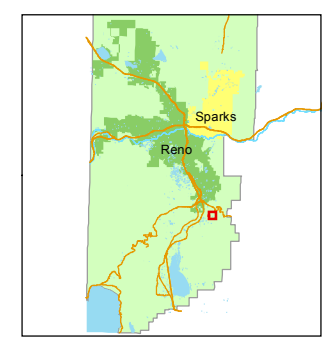
Assessor's Map Number
017-21

STATE OF NEVADA
WASHOE COUNTY
ASSESSOR'S OFFICE
Joshua G. Wilson, Assessor

1001 East Ninth Street
Building D
Reno, Nevada 89512
(775) 328-2231



1 inch = 200 feet



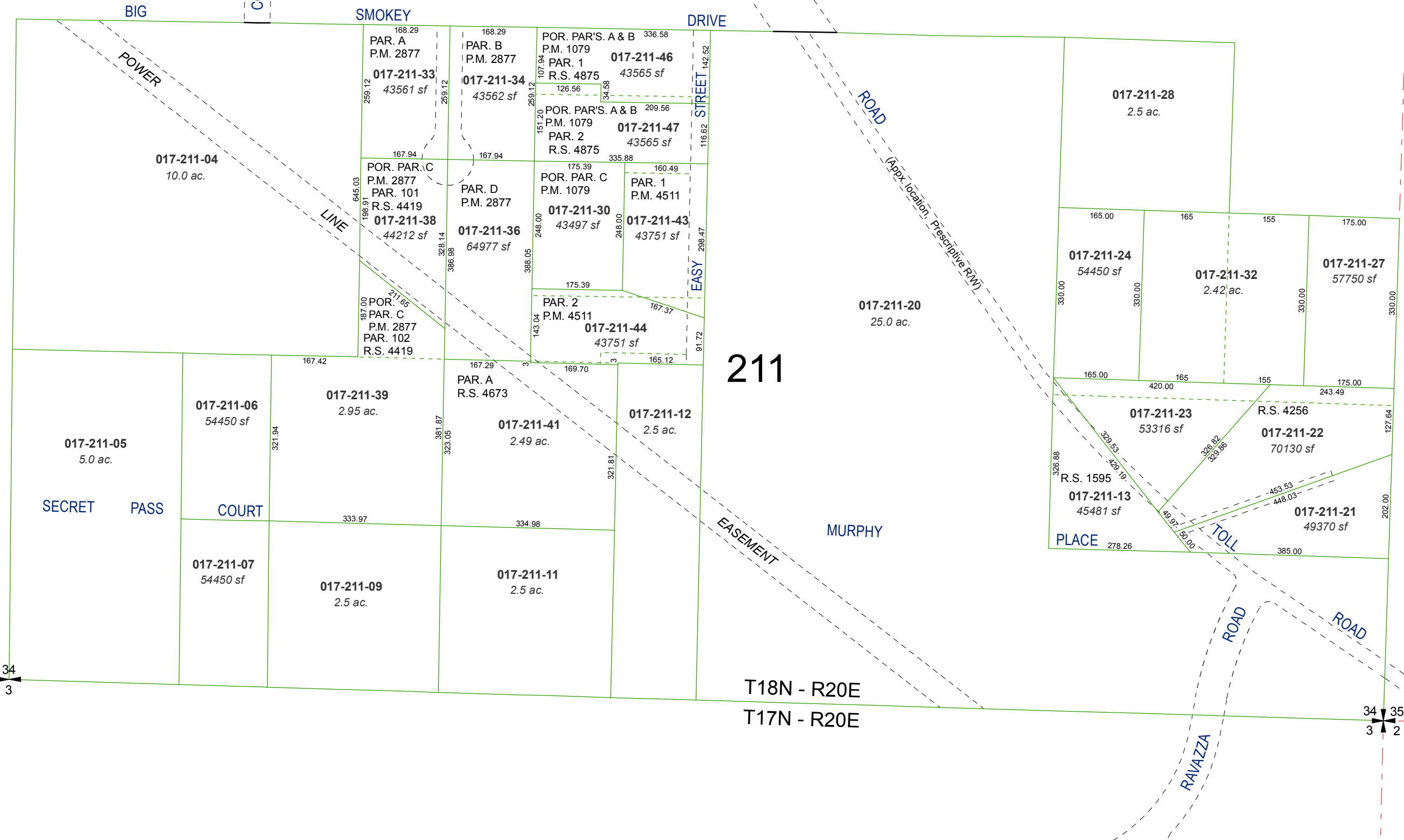
created by: TWT 1/25/2013

last updated: _____

area previously shown on map(s) _____

NOTE: This map was prepared for the use of the Washoe County Assessor for assessment and illustrative purposes only. It does not represent a survey of the premises. No liability is assumed as to the sufficiency or accuracy of the data delineated hereon.

NOTE: June 17, 1997
Easement lines on this map have been removed due to lack of information as to location and width. See memo in file.



34
3

34 35
3 2