

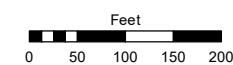
S 1/2 OF SW 1/4 OF SECTION 34
T18N - R20E

Assessor's Map Number

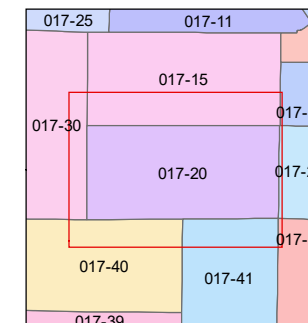
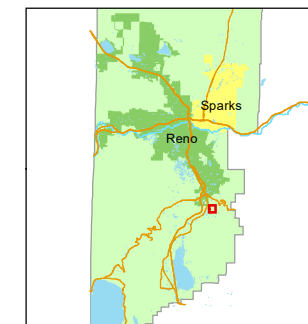
017-20

STATE OF NEVADA
WASHOE COUNTY
ASSESSOR'S OFFICE

1001 East Ninth Street, Building D
Reno, Nevada 89512
(775) 328-2231



1 inch = 200 feet



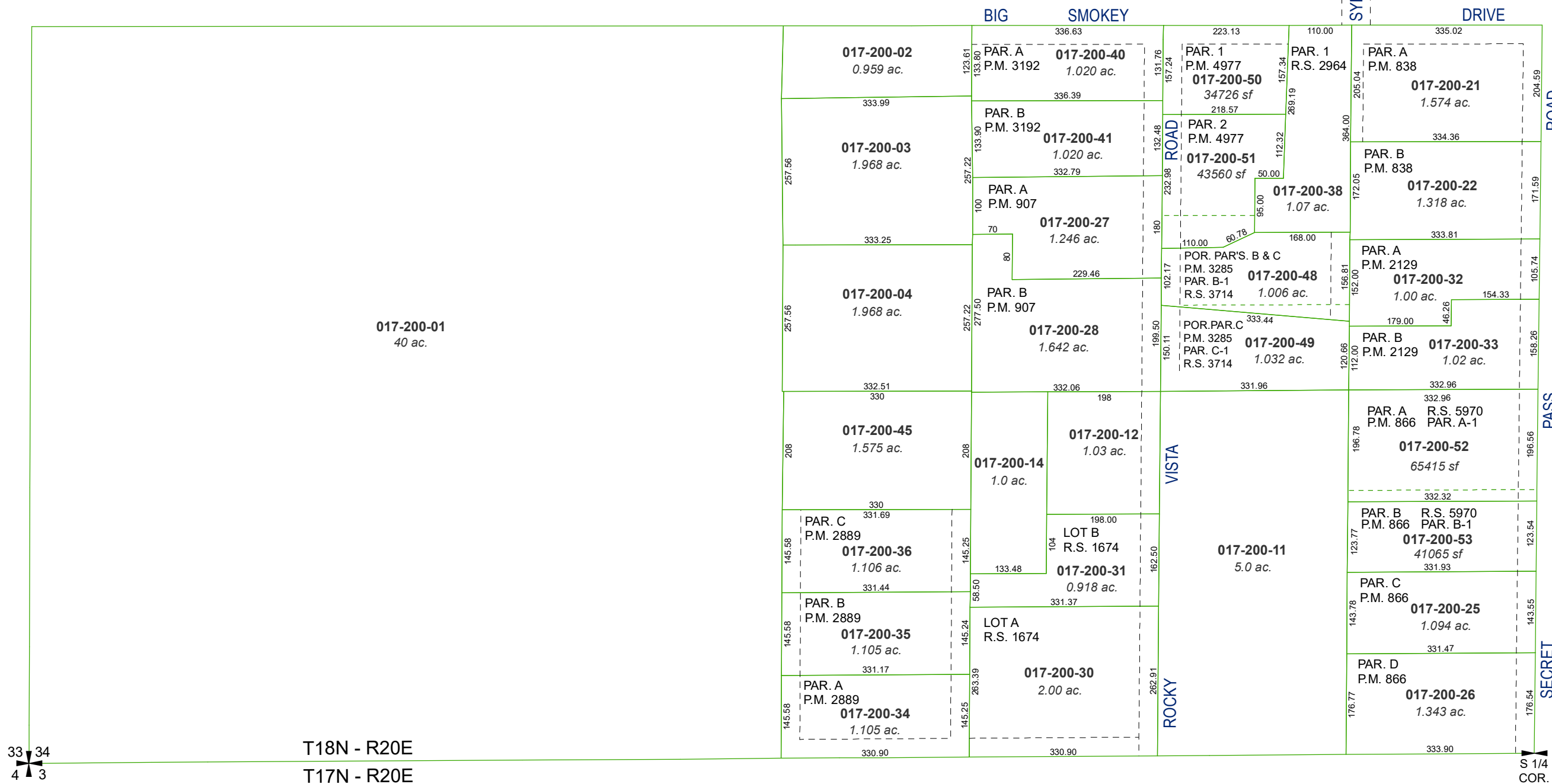
created by: TWT 5/27/2014

updated: JKF 7/5/18 JKF 1/19/22

JKF 5/20/22

area previously shown on map(s):

NOTE: This map was prepared for the use of the Washoe County Assessor for assessment and illustrative purposes only. It does not represent a survey of the premises. No liability is assumed as to the sufficiency or accuracy of the data delineated hereon.



33 34
4 3

T18N - R20E
T17N - R20E

S 1/4
COR.