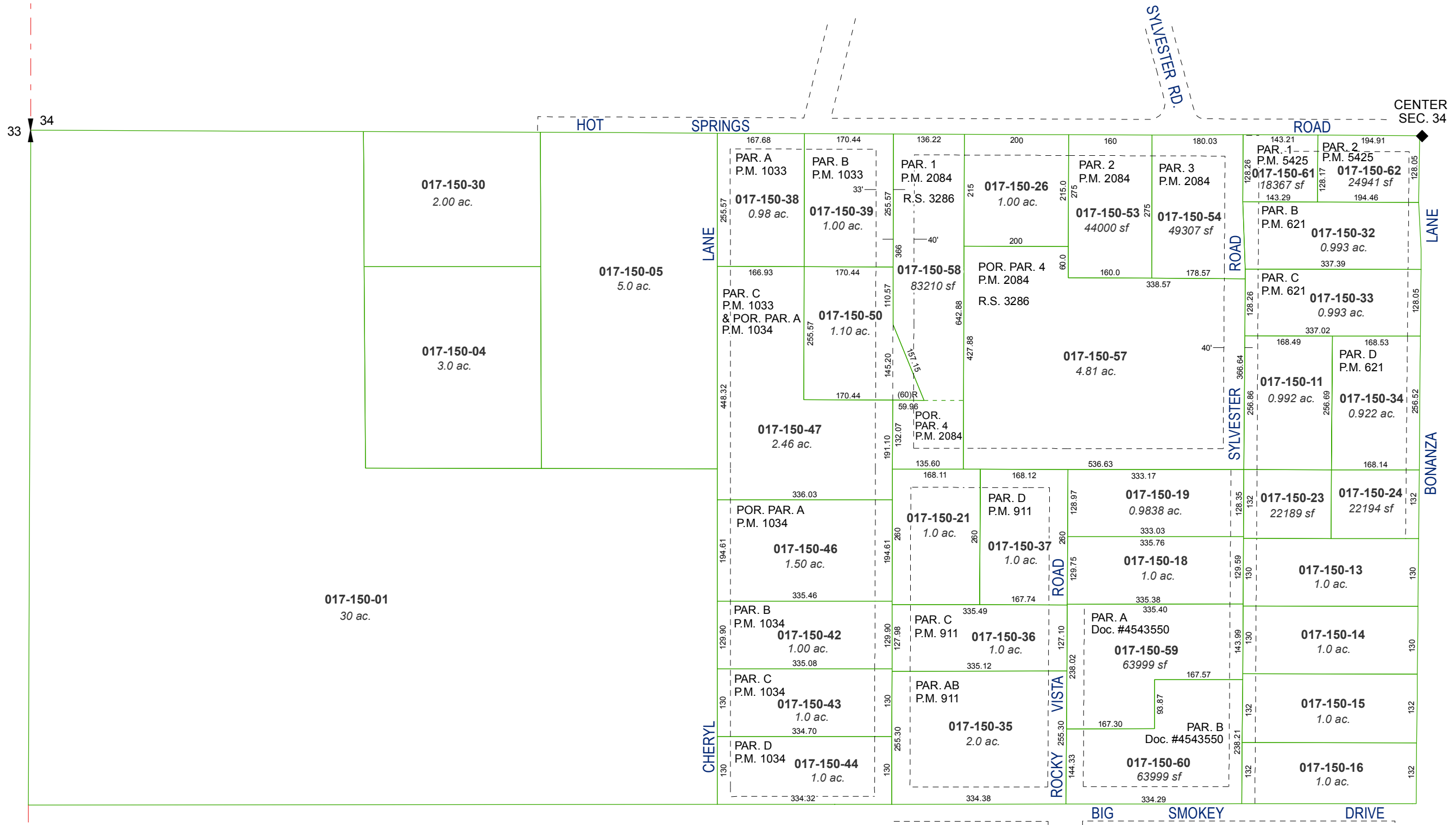


N 1/2 OF SW 1/4 OF SECTION 34  
T18N - R20E

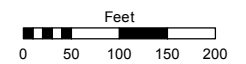


Assessor's Map Number

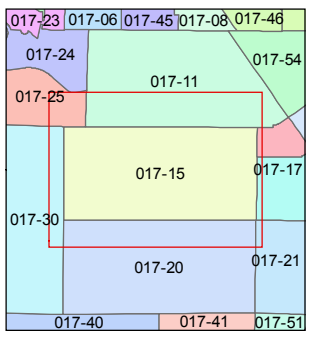
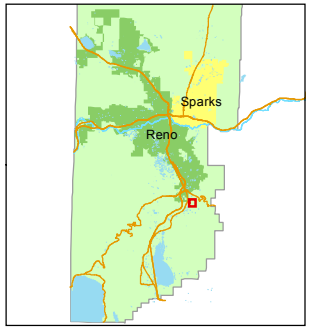
**017-15**

STATE OF NEVADA  
**WASHOE COUNTY**  
ASSESSOR'S OFFICE

1001 East Ninth Street, Building D  
Reno, Nevada 89512  
(775) 328-2231



1 inch = 200 feet



created by: TWT 11/23/2009  
updated: TWT 10/7/11 KSB 5/17/16  
JKF 6/20/18 JKF 9/19/19

area previously shown on map(s):

NOTE: This map was prepared for the use of the Washoe County Assessor for assessment and illustrative purposes only. It does not represent a survey of the premises. No liability is assumed as to the sufficiency or accuracy of the data delineated hereon.