

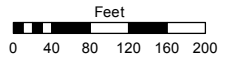
PORTION OF S 1/2 OF N 1/2
SECTION 34, T18N - R20E

Assessor's Map Number

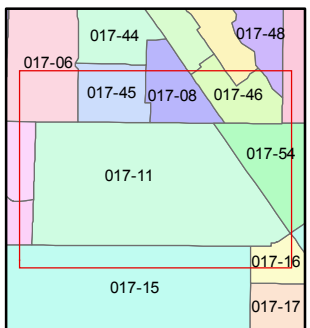
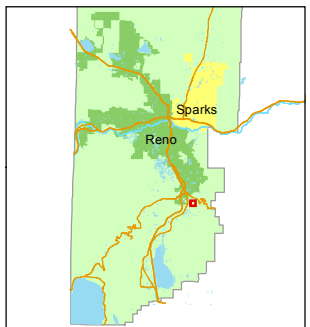
017-11

STATE OF NEVADA
WASHOE COUNTY
ASSESSOR'S OFFICE
Michael E. Clark, Assessor

1001 East Ninth Street
Building D
Reno, Nevada 89512
(775) 328-2231



1 inch = 200 feet

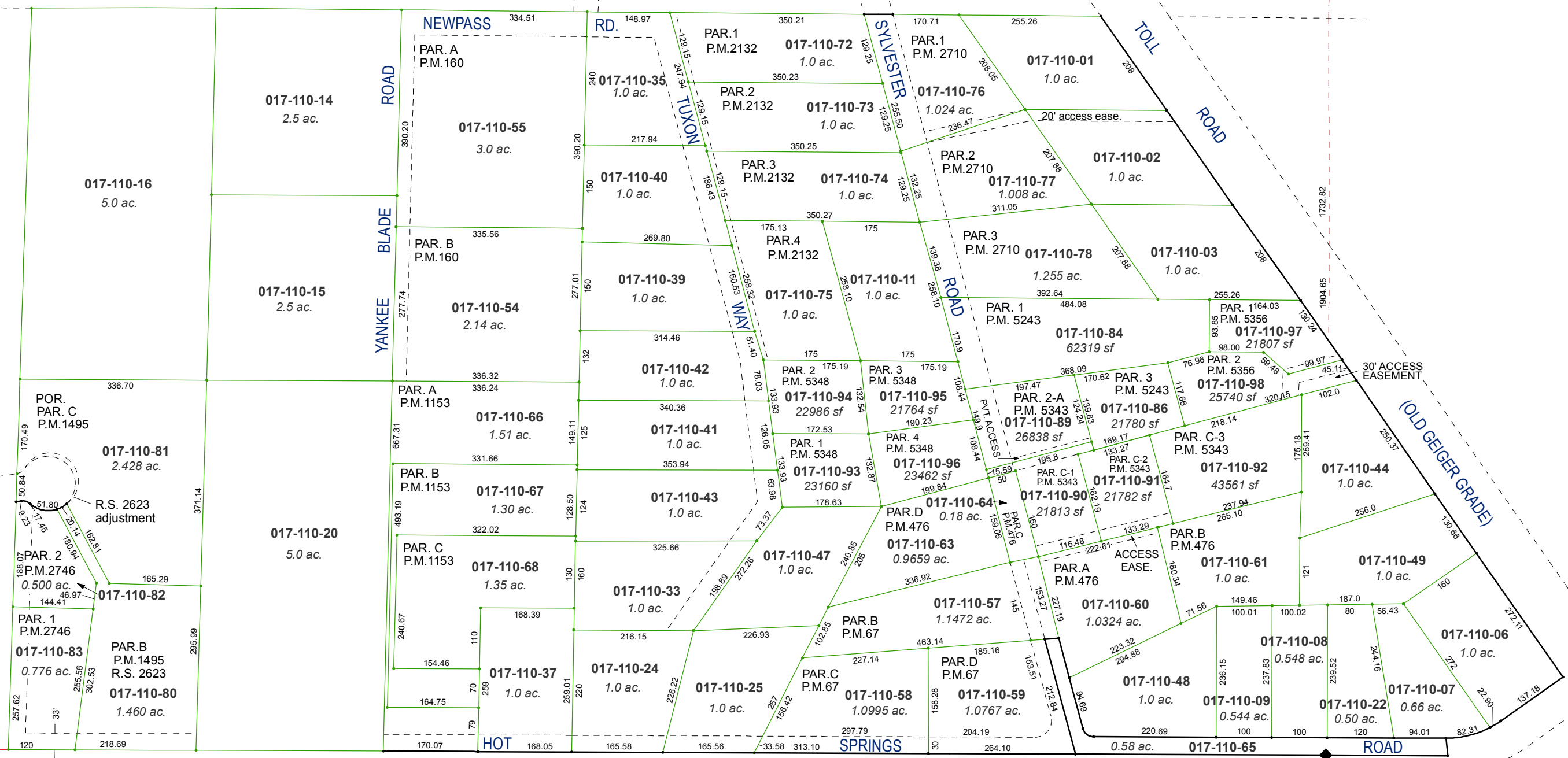


created by: **CFB 9/14/2009**

last updated: **JKF 5/23/18 JKF 6/19/18**

area previously shown on map(s)

NOTE: This map was prepared for the use of the Washoe County Assessor for assessment and illustrative purposes only. It does not represent a survey of the premises. No liability is assumed as to the sufficiency or accuracy of the data delineated hereon.



Center Sec. 34