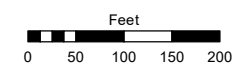
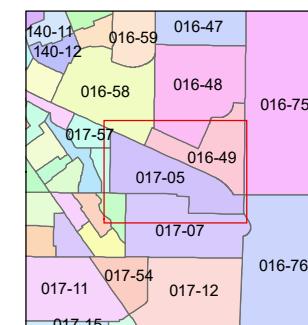
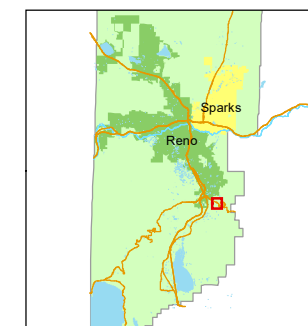


STATE OF NEVADA
WASHOE COUNTY
ASSESSOR'S OFFICE

1001 East Ninth Street, Building D
Reno, Nevada 89512
(775) 328-2231



1 inch = 200 feet



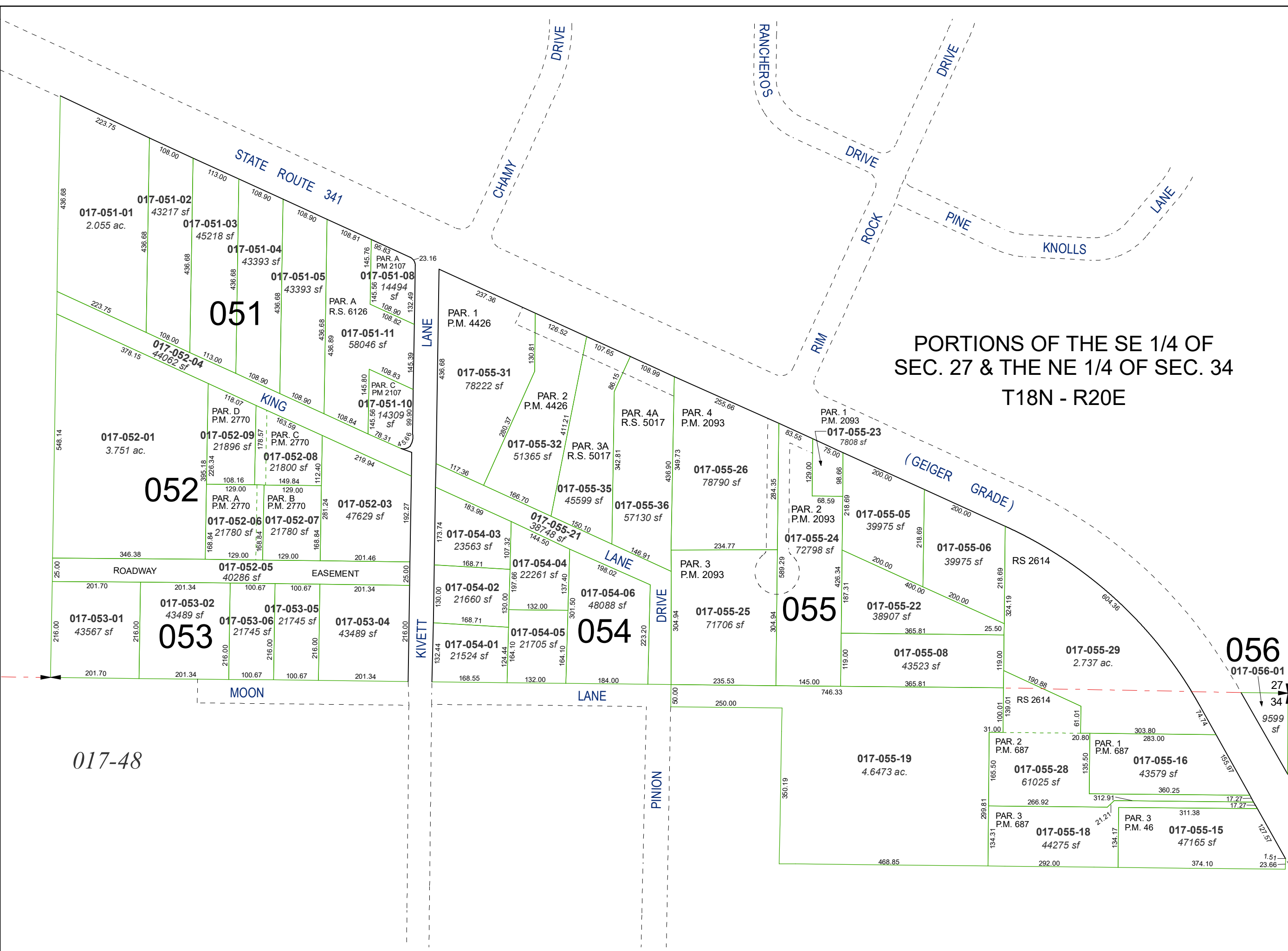
created by: TWT 11/25/2009

updated: CFB 2/14/11 JKF 2/20/20

area previously shown on map(s):

NOTE: This map was prepared for the use of the Washoe County Assessor for assessment and illustrative purposes only. It does not represent a survey of the premises. No liability is assumed as to the sufficiency or accuracy of the data delineated hereon.

PORTIONS OF THE SE 1/4 OF
SEC. 27 & THE NE 1/4 OF SEC. 34
T18N - R20E



017-48

051

052

053

054

055

056