

PORTION OF NE 1/4 OF SEC. 33
T18N - R20E

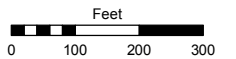
(#1363) STEAMBOAT SPRINGS ESTATES UNIT NO. 1

Assessor's Map Number

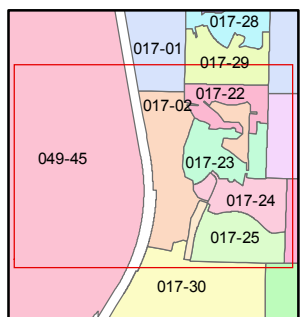
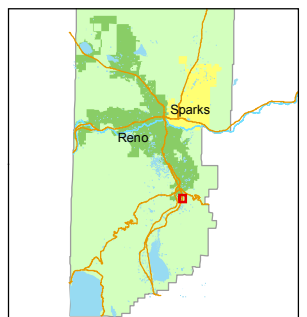
017-02

STATE OF NEVADA
WASHOE COUNTY
ASSESSOR'S OFFICE
Joshua G. Wilson, Assessor

1001 East Ninth Street
Building D
Reno, Nevada 89512
(775) 328-2231



1 inch = 300 feet



created by: KSB 7/13/2011

last updated: TWT 3/30/2015

area previously shown on map(s)

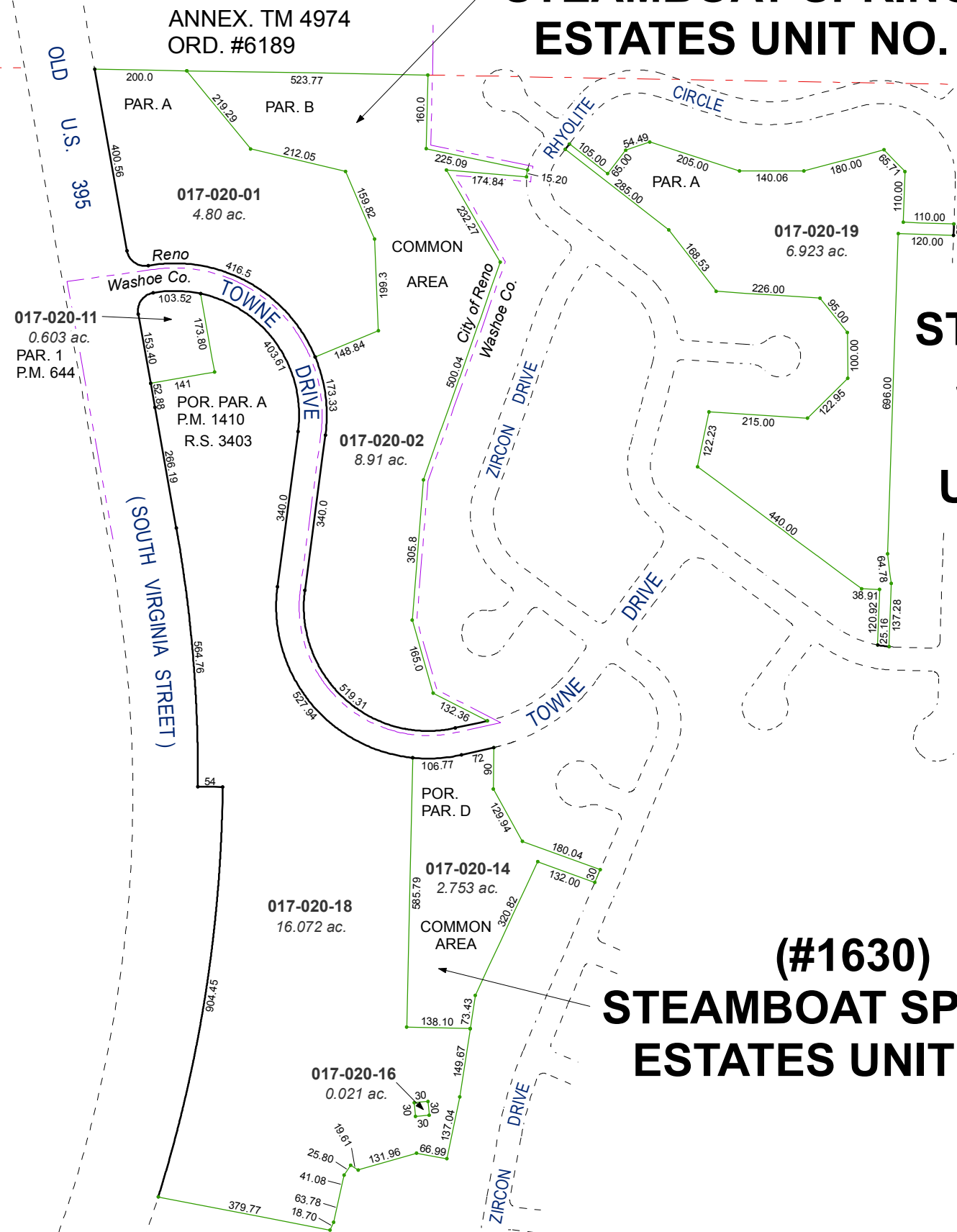
NOTE: This map was prepared for the use of the Washoe County Assessor for assessment and illustrative purposes only. It does not represent a survey of the premises. No liability is assumed as to the sufficiency or accuracy of the data delineated hereon.

28
33

28 27
33 34

(#1522) STEAMBOAT SPRINGS ESTATES UNIT NO. 2

(#1630) STEAMBOAT SPRINGS ESTATES UNIT NO. 3



33 34