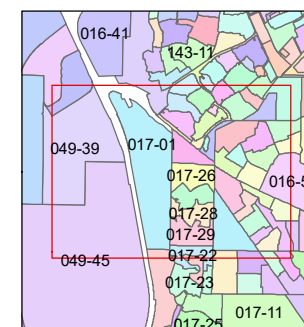
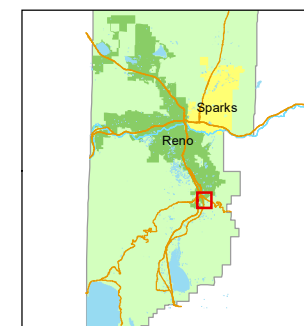


STATE OF NEVADA  
**WASHOE COUNTY**  
ASSESSOR'S OFFICE

1001 East Ninth Street, Building D  
Reno, Nevada 89512  
(775) 328-2231



1 inch = 500 feet



created by: CFB 2/8/2010

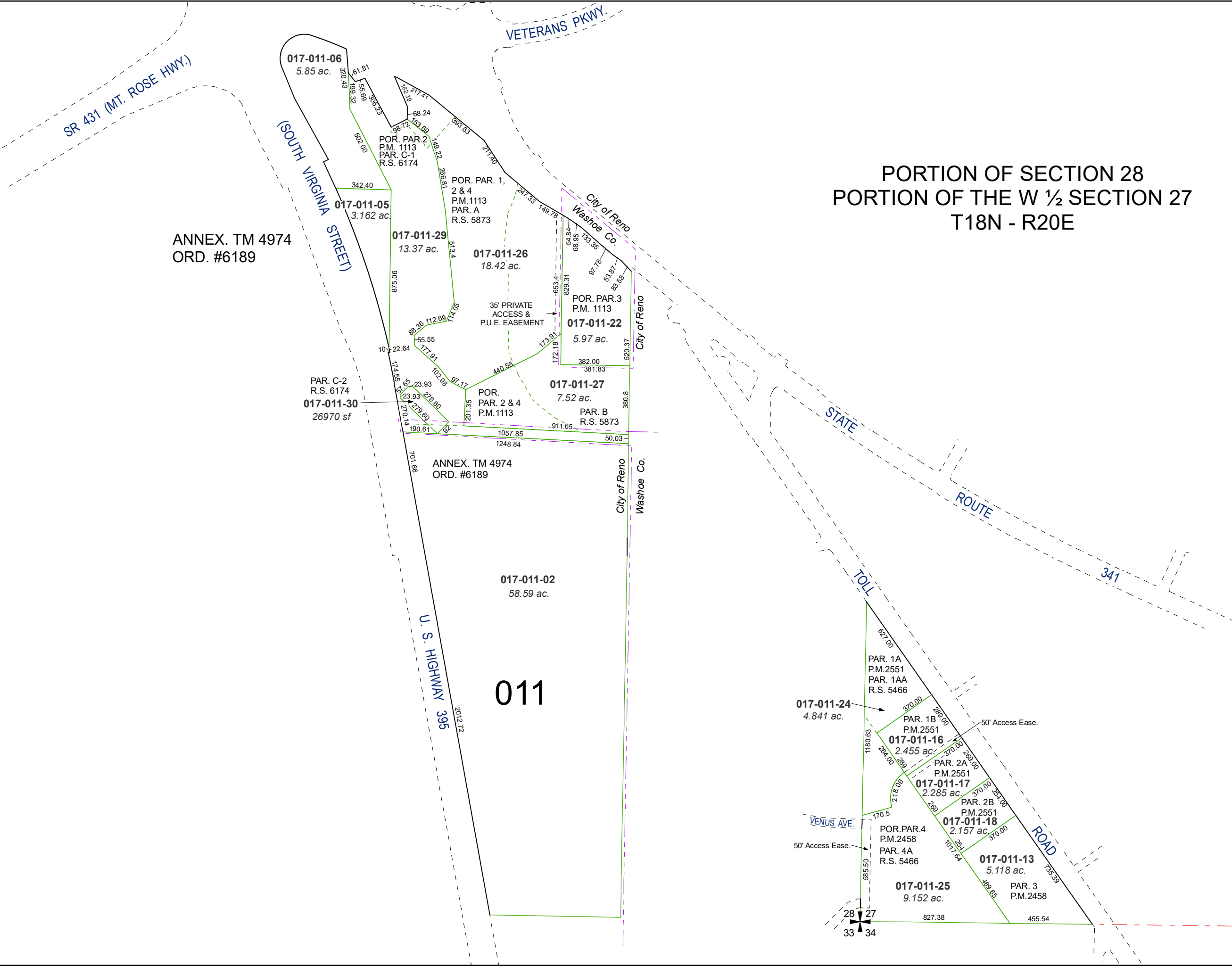
updated: KSB 4/1/13 JKF 10/19/17

JKF 7/14/20

area previously shown on map(s):  
016-44

NOTE: This map was prepared for the use of the Washoe County Assessor for assessment and illustrative purposes only. It does not represent a survey of the premises. No liability is assumed as to the sufficiency or accuracy of the data delineated hereon.

**PORTION OF SECTION 28  
PORTION OF THE W 1/2 SECTION 27  
T18N - R20E**



ANNEX. TM 4974  
ORD. #6189

**011**

PAR. 1A  
P.M.2551  
PAR. 1AA  
R.S. 5466

PAR. 1B  
P.M.2551

**017-011-16**  
2.455 ac.

PAR. 2A  
P.M.2551

**017-011-17**  
2.285 ac.

PAR. 2B  
P.M.2551

**017-011-18**  
2.157 ac.

POR.PAR.4  
P.M.2458  
PAR. 4A  
R.S. 5466

**017-011-13**  
5.118 ac.

PAR. 3  
P.M.2458

**017-011-25**  
9.152 ac.

50' Access Ease.

50' Access Ease.