

# AMENDED DIVISION OF LAND MAP NO. 25

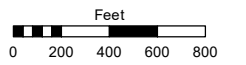
PORTION SECTIONS 22 & 23  
T18N - R20E

Assessor's Map Number

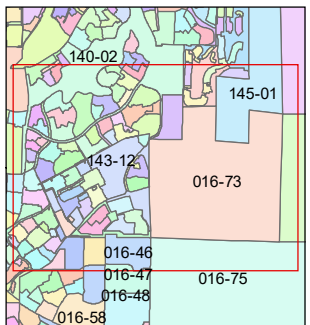
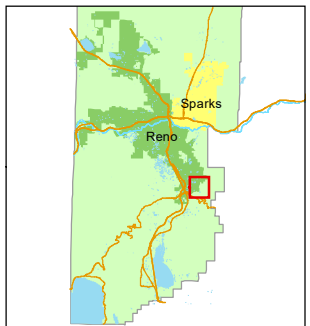
**016-73**

STATE OF NEVADA  
**WASHOE COUNTY**  
ASSESSOR'S OFFICE

1001 East Ninth Street, Building D  
Reno, Nevada 89512  
(775) 328-2231



1 inch = 800 feet



created by: NLH 10/07/2009

updated: SR 12/8/17 JFK 3/18/18

KSB 5/15/18 SR 6/13/18 JFK 1/27/20

area previously shown on map(s):

016-36

NOTE: This map was prepared for the use of the Washoe County Assessor for assessment and illustrative purposes only. It does not represent a survey of the premises. No liability is assumed as to the sufficiency or accuracy of the data delineated hereon.

