

AMENDED DIVISION OF LAND MAP NO. 25

SECTION 13, T18N - R20E

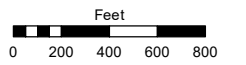
SECTION 18, T18N - R21E

Assessor's Map Number

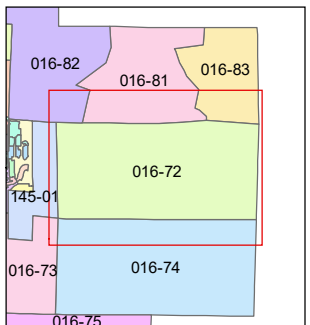
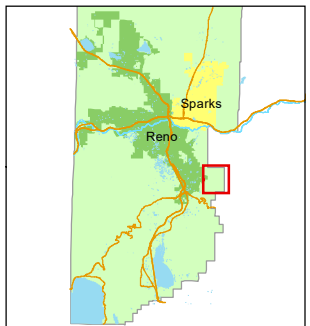
016-72

STATE OF NEVADA
WASHOE COUNTY
ASSESSOR'S OFFICE

1001 East Ninth Street, Building D
 Reno, Nevada 89512
 (775) 328-2231



1 inch = 800 feet

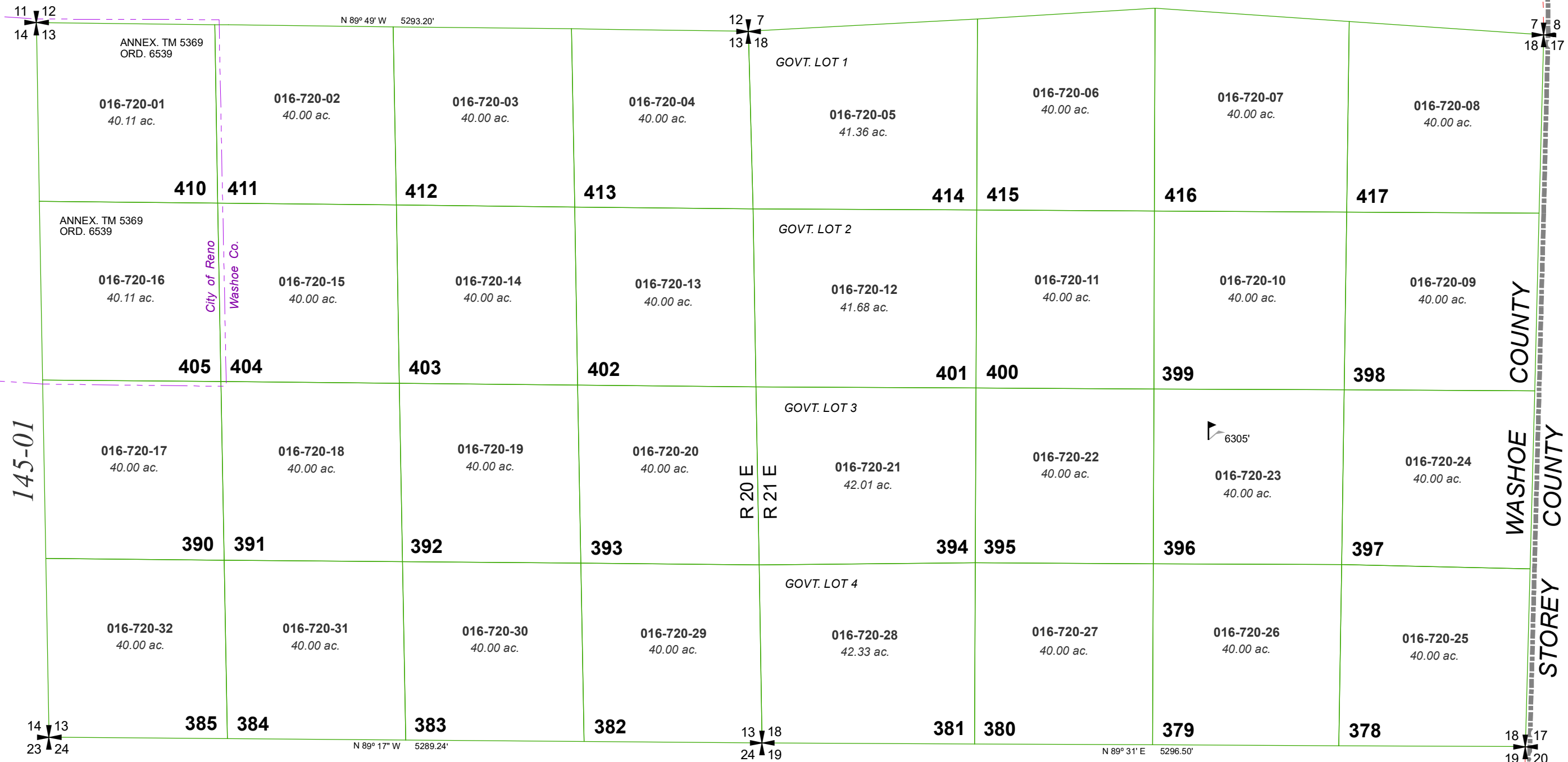


created by: TWT 3/26/2014

updated: KSB 4/29/20

area previously shown on map(s):

NOTE: This map was prepared for the use of the Washoe County Assessor for assessment and illustrative purposes only. It does not represent a survey of the premises. No liability is assumed as to the sufficiency or accuracy of the data delineated hereon.



145-01

City of Reno
Washoe Co.

WASHOE COUNTY
STOREY COUNTY

N 89° 49' W 5293.20' N 89° 17' W 5289.24' N 89° 31' E 5296.50'