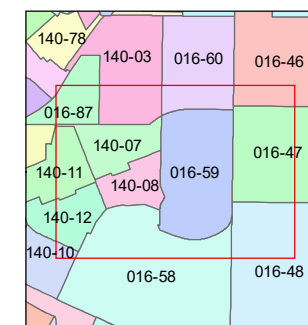
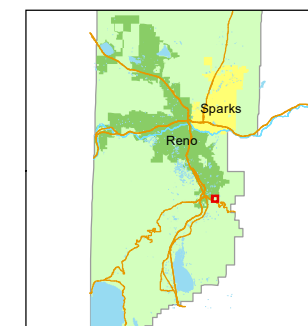


STATE OF NEVADA
WASHOE COUNTY
ASSESSOR'S OFFICE

1001 East Ninth Street, Building D
Reno, Nevada 89512
(775) 328-2231



1 inch = 200 feet

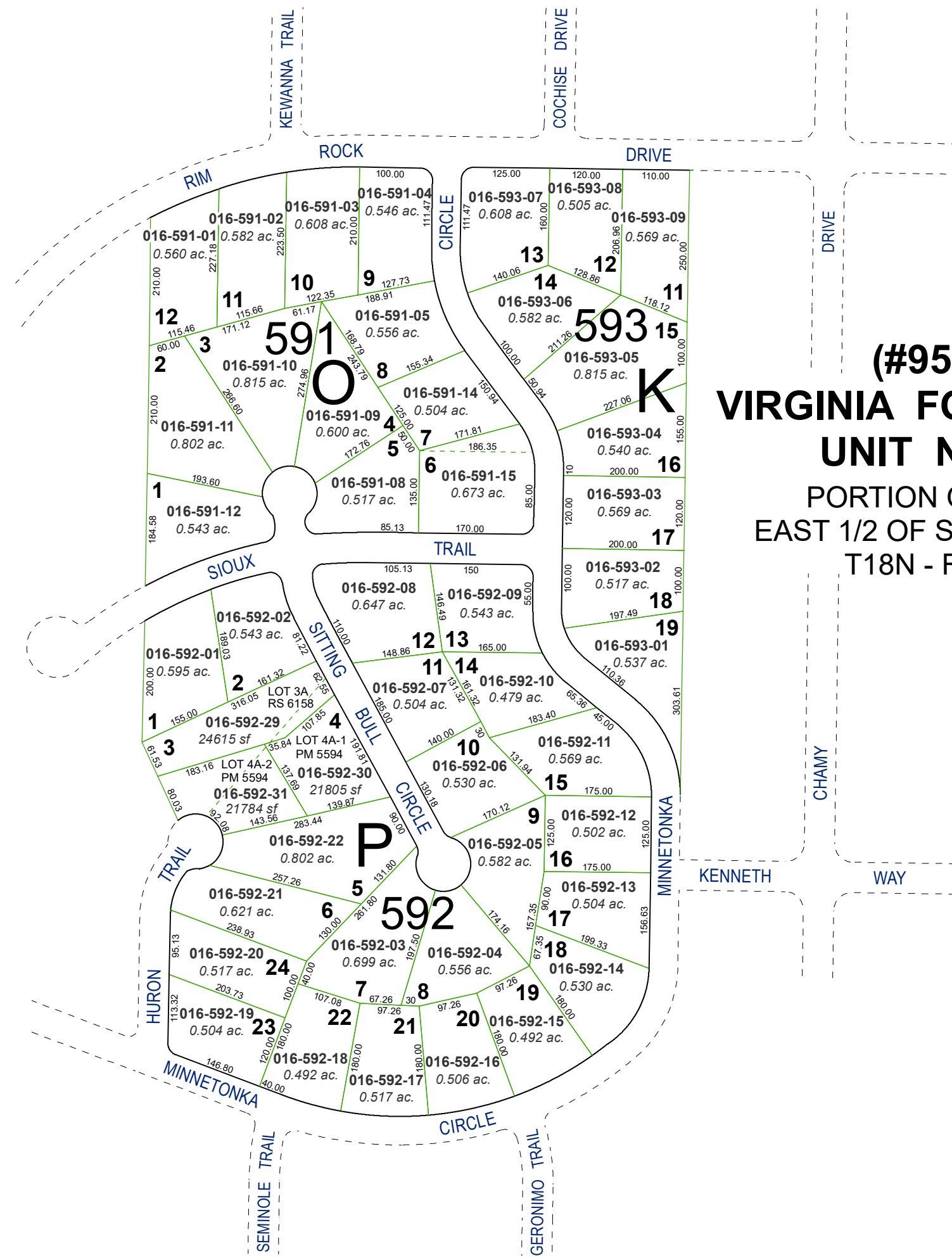


created by: TWT 03/25/2014

updated: SR 05/21/20 JRA 5/2/22

area previously shown on map(s):

NOTE: This map was prepared for the use of the Washoe County Assessor for assessment and illustrative purposes only. It does not represent a survey of the premises. No liability is assumed as to the sufficiency or accuracy of the data delineated hereon.



(#954)
VIRGINIA FOOTHILLS
UNIT NO. 6
PORTION OF THE
EAST 1/2 OF SECTION 27
T18N - R20E