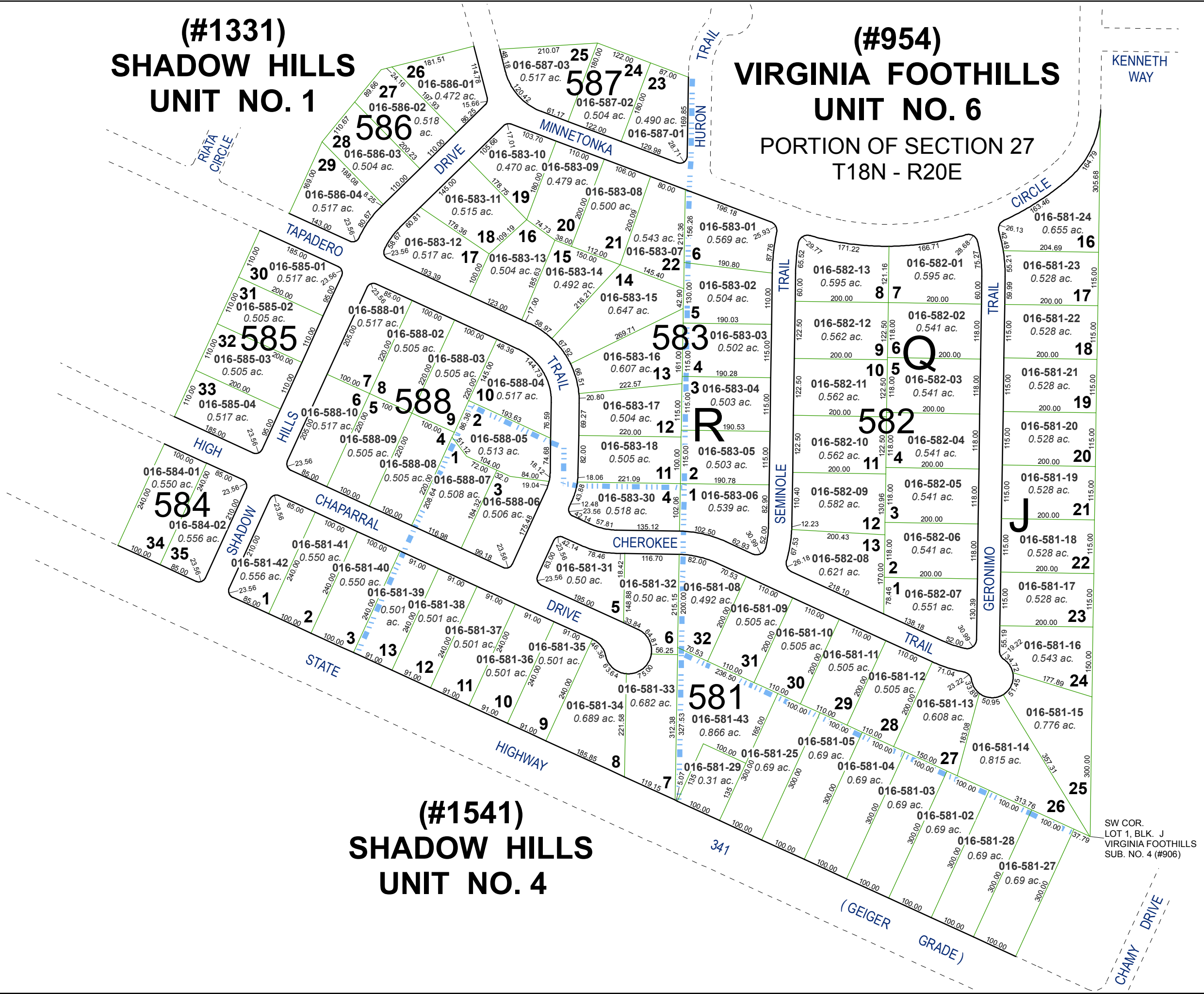


**(#1331)  
SHADOW HILLS  
UNIT NO. 1**

**(#954)  
VIRGINIA FoothILLS  
UNIT NO. 6  
PORTION OF SECTION 27  
T18N - R20E**

**(#1541)  
SHADOW HILLS  
UNIT NO. 4**

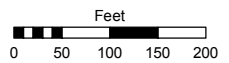


Assessor's Map Number

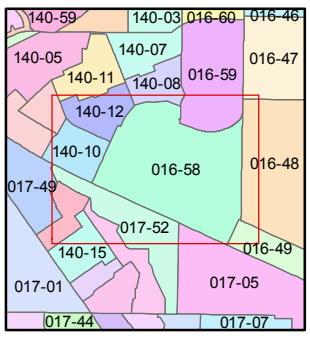
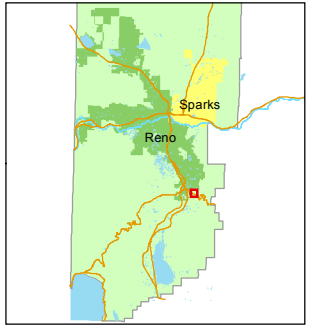
**016-58**

STATE OF NEVADA  
**WASHOE COUNTY**  
ASSESSOR'S OFFICE  
Joshua G. Wilson, Assessor

1001 East Ninth Street  
Building D  
Reno, Nevada 89512  
(775) 328-2231



1 inch = 200 feet



created by: TWT 3/19/2014

last updated: \_\_\_\_\_

area previously shown on map(s) \_\_\_\_\_

NOTE: This map was prepared for the use of the Washoe County Assessor for assessment and illustrative purposes only. It does not represent a survey of the premises. No liability is assumed as to the sufficiency or accuracy of the data delineated hereon.