

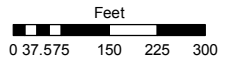
PORTION OF THE SW 1/4 SEC. 21
T18N - R20E

Assessor's Map Number

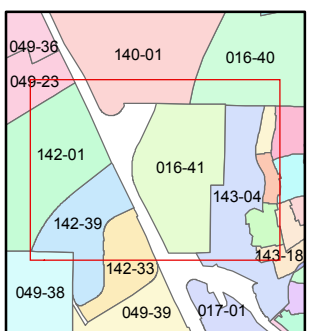
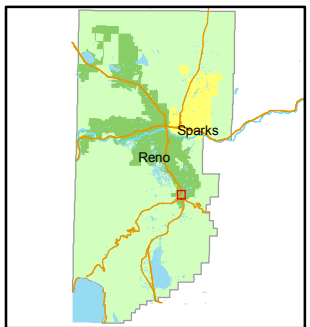
016-41

STATE OF NEVADA
WASHOE COUNTY
ASSESSOR'S OFFICE
Joshua G. Wilson, Assessor

1001 East Ninth Street
Building D
Reno, Nevada 89512
(775) 328-2231



1 inch = 300 feet

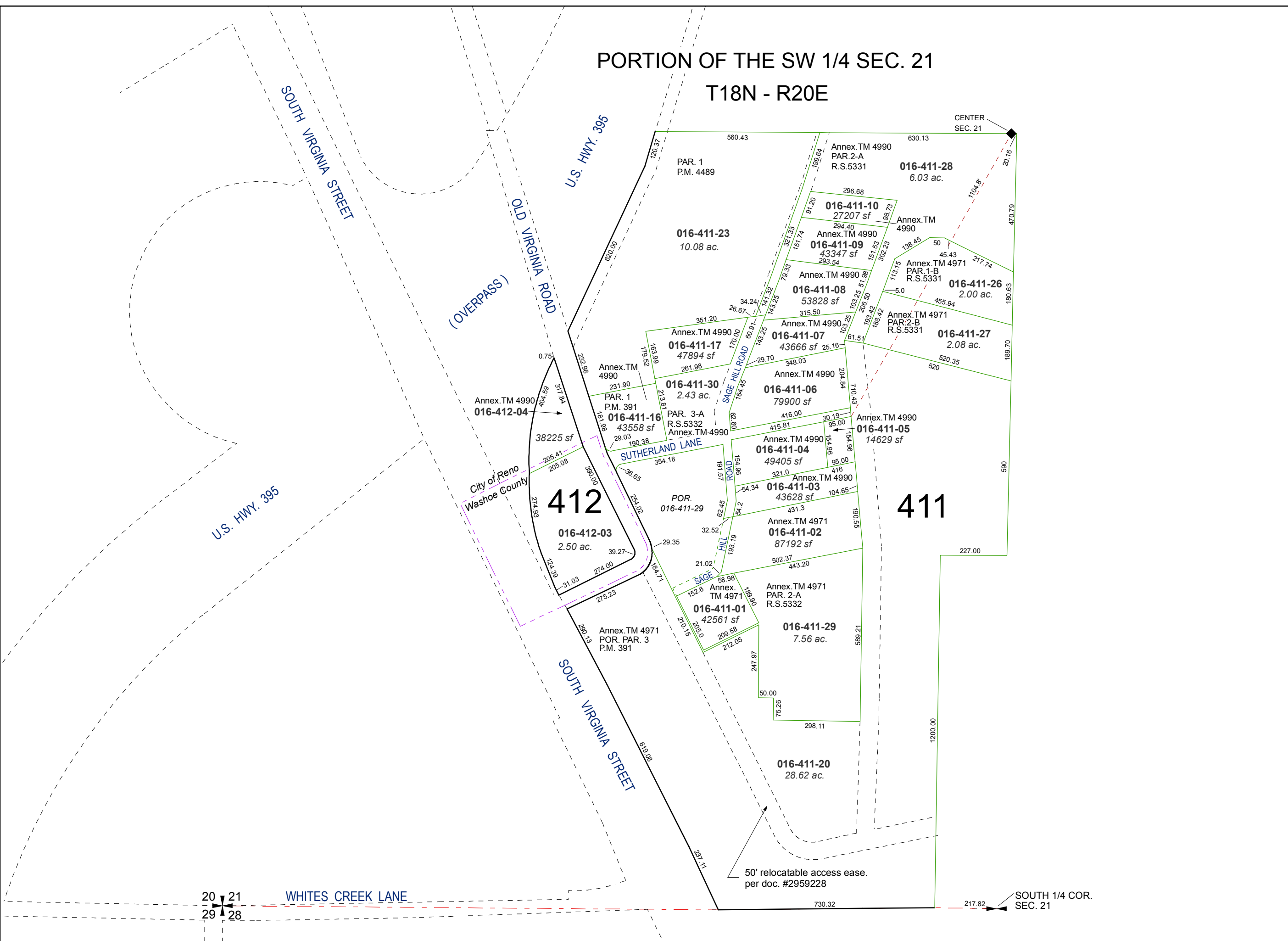


created by: CFB 5/12/2010

last updated: CFB 6/08/11 NLH 7/19/11

area previously shown on map(s)

NOTE: This map was prepared for the use of the Washoe County Assessor for assessment and illustrative purposes only. It does not represent a survey of the premises. No liability is assumed as to the sufficiency or accuracy of the data delineated hereon.



20 21
29 28

WHITES CREEK LANE

SOUTH 1/4 COR. SEC. 21