

POR. SW 1/4 SW 1/4 SEC. 14
AND POR. NW 1/4 NW 1/4 SEC. 23
T18N - R20E

BOOK 140

STANLEY LANE

RIO WRANGLER PARKWAY

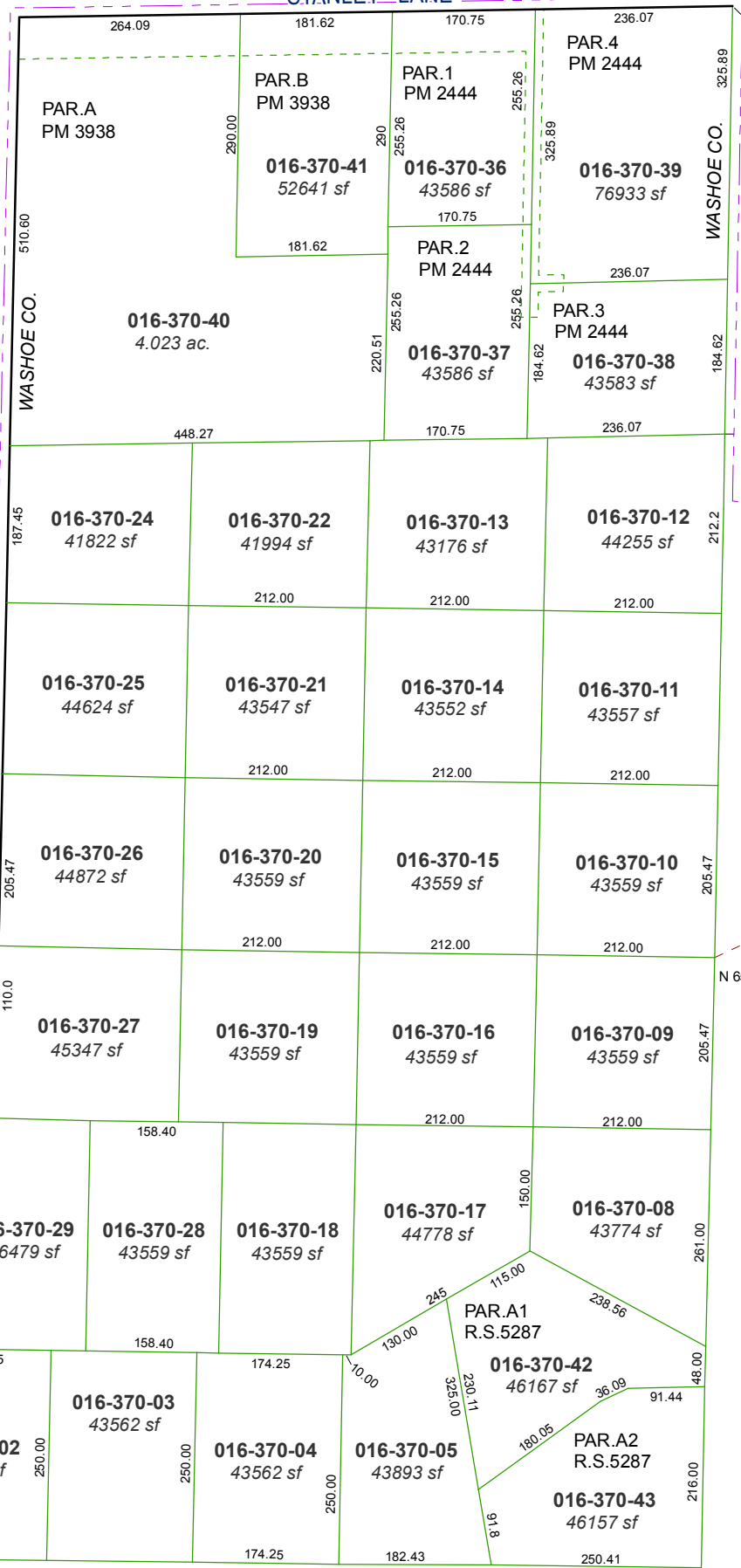
15 14
22 23

S89-07-10W
519.77
(PER P.M. 2444)

BOOK 140

WESTERN SKIES DRIVE

CITY OF RENO
WASHOE CO.



145-12

016-73

N 65°07'02" E 1529.72

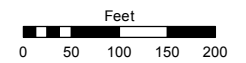
PARCEL 3,
DED.TM 5244
016-370-44
149 sf

DED.TM 5244
016-370-45
34188 sf

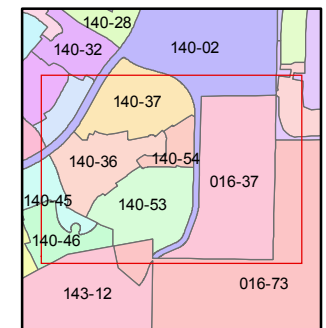
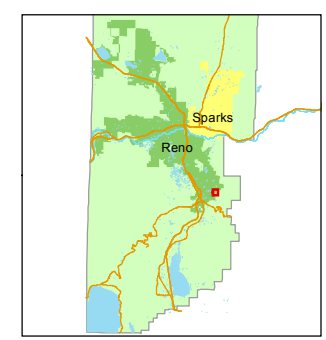
Assessor's Map Number
016-37

STATE OF NEVADA
WASHOE COUNTY
ASSESSOR'S OFFICE
Michael E. Clark, Assessor

1001 East Ninth Street
Building D
Reno, Nevada 89512
(775) 328-2231



1 inch = 200 feet



created by: CFB 02/14/2011

last updated: SR 12/8/17

area previously shown on map(s)

NOTE: This map was prepared for the use of the Washoe County Assessor for assessment and illustrative purposes only. It does not represent a survey of the premises. No liability is assumed as to the sufficiency or accuracy of the data delineated hereon.